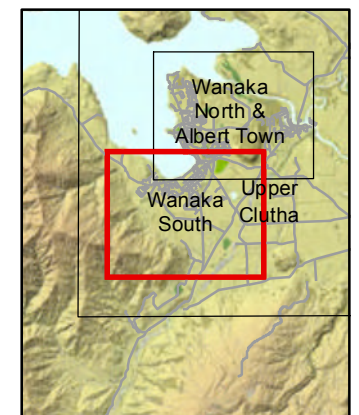


SPEED LIMIT MAPS

Wanaka South

Legend

- Distance Indicator
- Unmaintained Roads
- 10 km/h speed limit
- 30 km/h speed limit
- 50 km/h speed limit
- 60 km/h speed limit
- 70 km/h speed limit
- 80 km/h speed limit
- 100 km/h speed limit
- State Highway
- Urban Traffic Areas

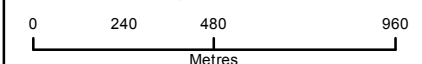


Queenstown Lakes District Council has designated areas (Urban Traffic Areas) and roads on this map as having speed limits indicated by the colours represented in the legend. Unless otherwise shown on the maps or referenced in any schedule to the Speed Limits Bylaw 2009 as having a specified speed limit, all roads within an Urban Traffic Area are deemed to have an urban speed limit of 50km/h. Any other roads which are not referenced on any map or in any schedule to the Speed Limits Bylaw 2009 as having a specified speed limit, are deemed to have a rural speed limit of 100 km/h.

1. Scales given on this plan are approximate for the purpose of legal description. Dimensions given are the extent of the speed limit areas.
2. All legend markings crossing a road are deemed to cross the road at right angles from one side of the road to the opposite by the shortest distance.
3. Where no dimensions or distance is given or shown where legend markings cross a road at a sideroad, the markings are deemed to cross the road at the prolongation of the side road carriageway edge.
4. All distance indicators marked along a road are deemed to run along the carriageway edge of the marked road unless otherwise dimensioned or shown.
5. The Queenstown Lakes District Council Speed Limits Bylaw 2009 and including these maps do not apply to state highways and private roads.

This plan is to be used for the purpose of identifying speed limits in conjunction with the Queenstown Lakes District Council Speed Limits Bylaw 2009 and is not to be used for any other purpose. The Council accepts no responsibility or liability to anyone using it for any other purpose.

1:20,000 @ A3



Date Printed: May 2013

Sheet 5 Version 4