

# LAKE WANAKA CENTRE

## MAIN AUDITORIUM

Size **280m<sup>2</sup>**

### Capacity

Cocktail	<b>500</b>
Theatre	<b>330</b>
Banquet	<b>200</b>

## FAULKES ROOM

Size **42m<sup>2</sup>**

### Capacity

Cocktail	<b>60</b>
Theatre	<b>50</b>
Banquet	<b>40</b>

## ARMSTRONG ROOM

Size **96m<sup>2</sup>**

### Capacity

Cocktail	<b>150</b>
Theatre	<b>100</b>
Banquet	<b>80</b>

Nestled in the heart of the picturesque Wanaka township, the Lake Wanaka Centre is one of the most popular venues in the district.

Built from natural timbers and local stacked stone, the complex is set within landscaped grounds right beside the clear waters of Bullock Creek. The interior is warm, modern and attractively decorated, making it a versatile option for all occasions.

VIEW OF LAKE WANAKA



# LAKE WANAKA CENTRE

CONFERENCES / CORPORATE AND PRIVATE FUNCTIONS  
WEDDINGS / CONCERTS / EXHIBITIONS / THEATRE



THE LAKE WANAKA CENTRE has been designed with flexibility in mind and the Centre is happy to assist with your particular requirements for any group size.

Modern bars and kitchens complement room facilities. A sweeping deck and patio area cater for outdoor dining or pre-dinner drinks.

Also included is an orchestra pit, conference furniture, in-house public address system, excellent sound and light infrastructure, air conditioning and three phase power.

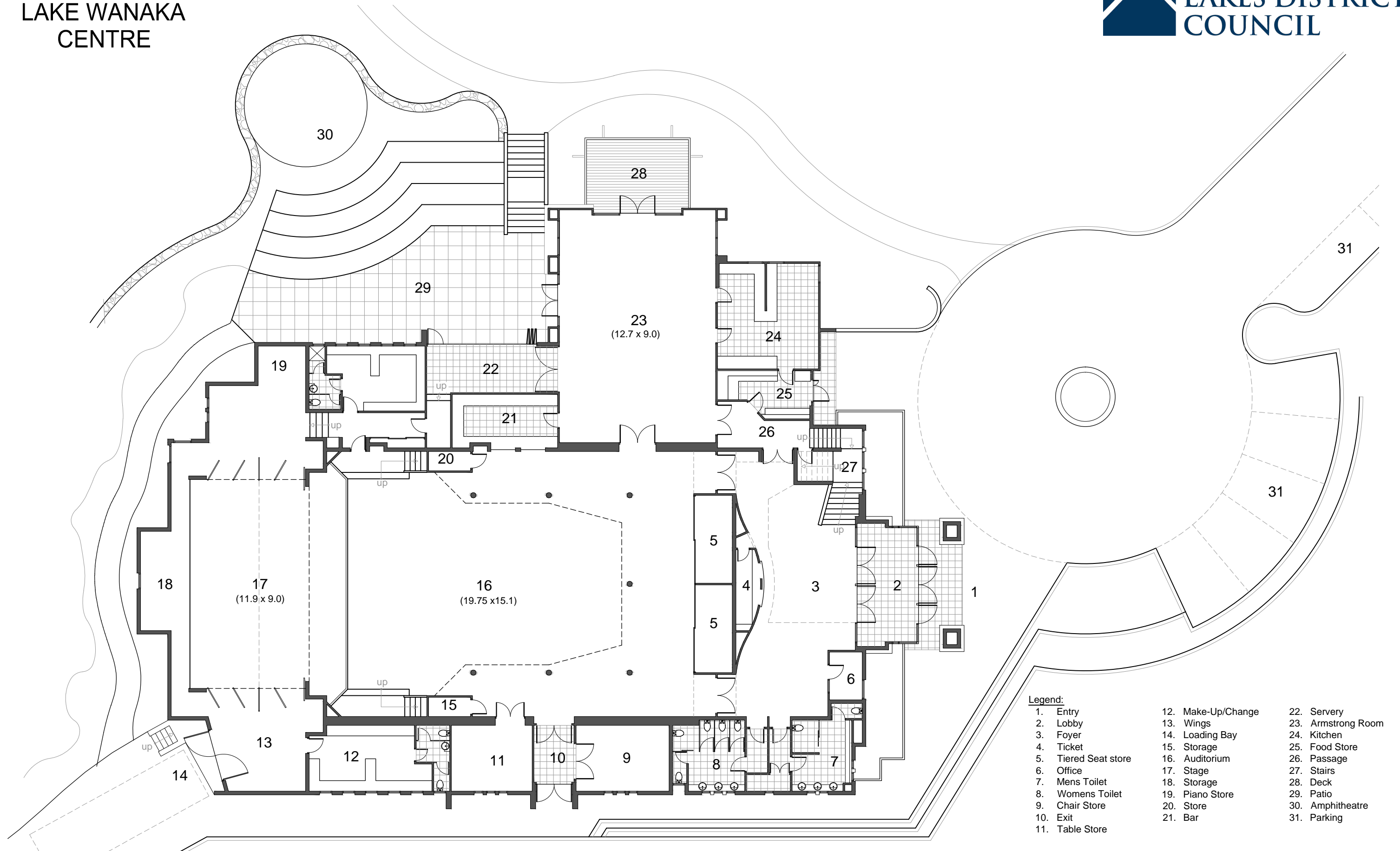


**LOCATION** Lake Wanaka Centre is conveniently located in the heart of the town centre, in close proximity to a number of hotels, restaurants and retail outlets.



 [sportrec.qldc.govt.nz/venues](http://sportrec.qldc.govt.nz/venues)

# LAKE WANAKA CENTRE



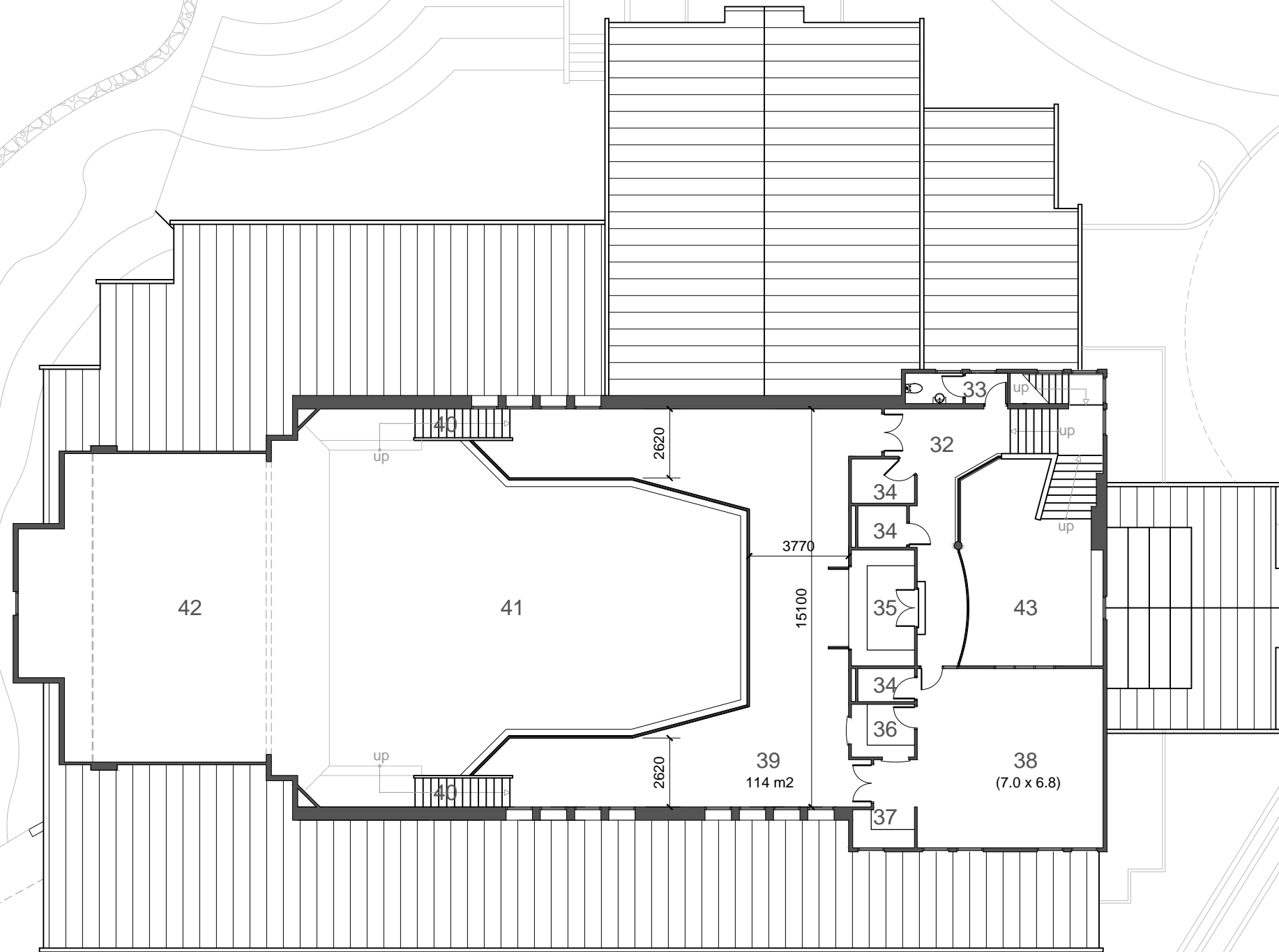
**Legend:**

- |                      |                    |                    |
|----------------------|--------------------|--------------------|
| 1. Entry             | 12. Make-Up/Change | 22. Servery        |
| 2. Lobby             | 13. Wings          | 23. Armstrong Room |
| 3. Foyer             | 14. Loading Bay    | 24. Kitchen        |
| 4. Ticket            | 15. Storage        | 25. Food Store     |
| 5. Tiered Seat store | 16. Auditorium     | 26. Passage        |
| 6. Office            | 17. Stage          | 27. Stairs         |
| 7. Mens Toilet       | 18. Storage        | 28. Deck           |
| 8. Womens Toilet     | 19. Piano Store    | 29. Patio          |
| 9. Chair Store       | 20. Store          | 30. Amphitheatre   |
| 10. Exit             | 21. Bar            | 31. Parking        |
| 11. Table Store      |                    |                    |

Scale 1:200

## GROUND FLOOR - DRY FACILITY PLAN

Date February 2012



Legend:  
32. Landing  
33. Toilet  
34. Switchboard  
35. Audio/Video rm  
36. Bar  
37. Kitchen

38. Faulks Room  
39. Mezzanine  
40. Stair  
41. Auditorium Below  
42. Stage Below  
43. Foyer Below



