

# ARROWTOWN ATHENAEUM HALL

## MAIN AUDITORIUM

Size **192m<sup>2</sup>**

Capacity

Cocktail **400**

Theatre **234**

Banquet **150**

## SUPPER ROOM

Size **112m<sup>2</sup>**

Capacity

Cocktail **117**

Theatre **100**

Banquet **60**

Located in the main street of Arrowtown with its array of boutique shops and restaurants and backed by the impressive Crown Range, Arrowtown Athenaeum Hall is the place to come for your theatre, conference or special occasion.

A favourite with visitors and locals alike, the small gold mining town's historic centerpiece adds charm and character to your event.

BUCKINGHAM STREET, ARROWTOWN

## Arrowtown Athenaeum Hall

QUEENSTOWN LAKES DISTRICT COUNCIL

# ARROWTOWN ATHENAEUM HALL

CONCERTS / EVENTS / CONFERENCES / WEDDINGS  
CORPORATE AND PRIVATE FUNCTIONS



## ARROWTOWN ATHENAEUM HALL

A well-loved special events venue, Arrowtown Athenaeum Hall is often used for concerts and productions from local theatre and musical societies.

The Hall also serves as a central meeting point for the Arrowtown community who use it weekly for dancing groups, tai chi, yoga and kids programmes.

The Hall includes a main auditorium, presentation and performance stage, supper room with full kitchen and bar facilities, a backstage area, dressing room and excellent access.

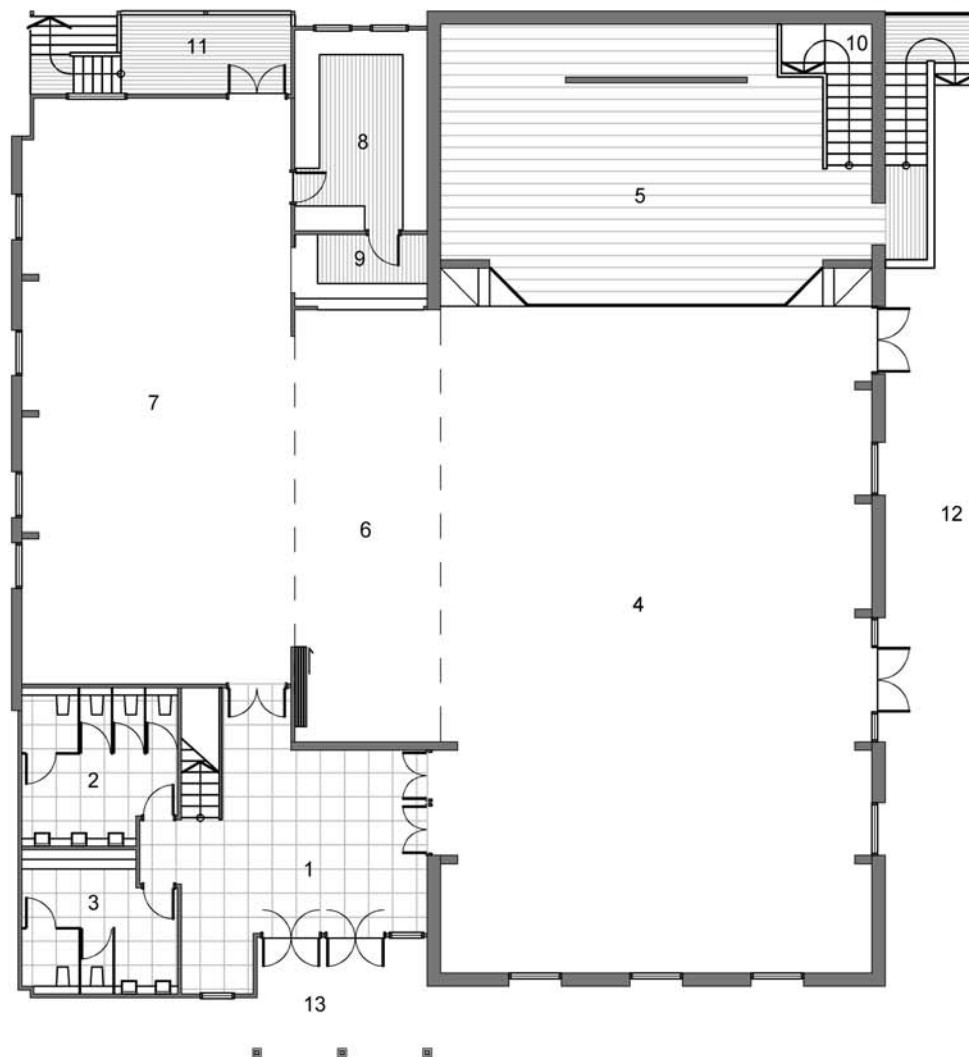
**LOCATION** Arrowtown Athenaeum Hall is located 15 minutes from the Queenstown International Airport and 20 minutes from the Queenstown CBD.



 [sportrec.qldc.govt.nz/venues](https://sportrec.qldc.govt.nz/venues)

# ATHENAEUM HALL - ARROWTOWN

1. Foyer
2. Womens Toilets
3. Mens Toilets
4. Hall
5. Stage
6. Alcove
7. Supper Room
8. Kitchen
9. Bar
10. Stair (to basement store)
11. Deck
12. Greenspace
13. Entry from Bukingham Street



Scale 1 : 200

Floor Plan

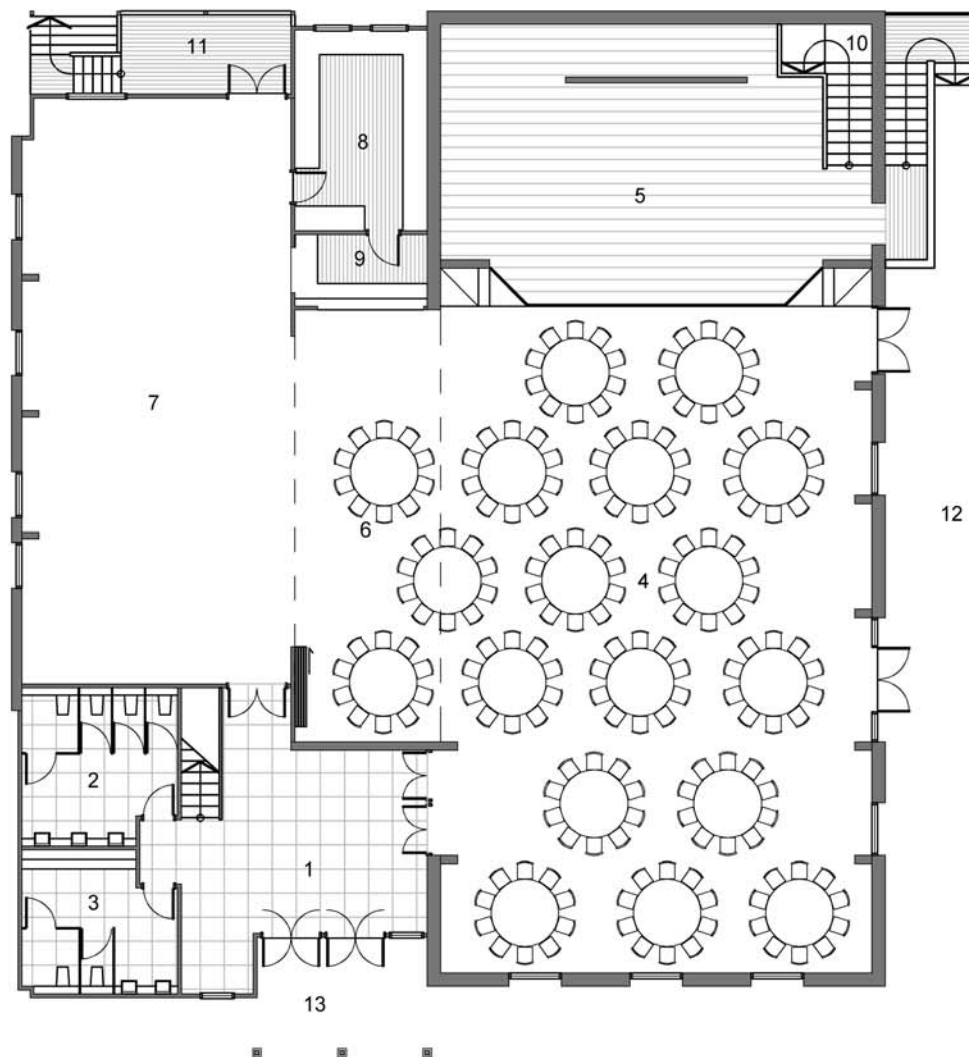
Date

June, 2009

# ATHENAEUM HALL - ARROWTOWN

- 1. Foyer
- 2. Womens Toilets
- 3. Mens Toilets
- 4. Hall
- 5. Stage
- 6. Alcove
- 7. Supper Room
- 8. Kitchen
- 9. Bar
- 10. Stair (to basement store)
- 11. Deck
- 12. Greenspace
- 13. Entry from Bukingham Street

Round table seating: 170



Scale 1 : 200

Floor Plan

Date

June, 2009

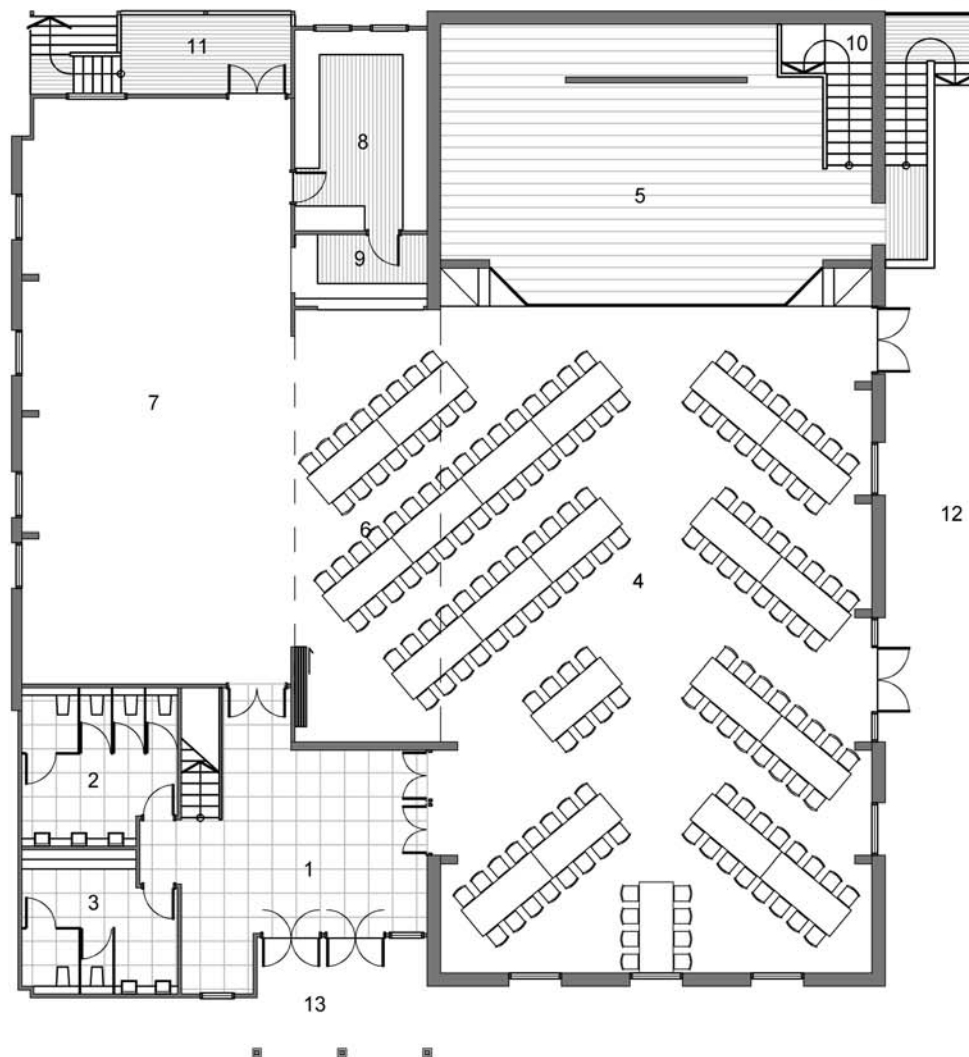


# ATHENAEUM HALL - ARROWTOWN



1. Foyer
2. Womens Toilets
3. Mens Toilets
4. Hall
5. Stage
6. Alcove
7. Supper Room
8. Kitchen
9. Bar
10. Stair (to basement store)
11. Deck
12. Greenspace
13. Entry from Bukingham Street

Banquet Seating: 168



Scale 1 : 200

Floor Plan

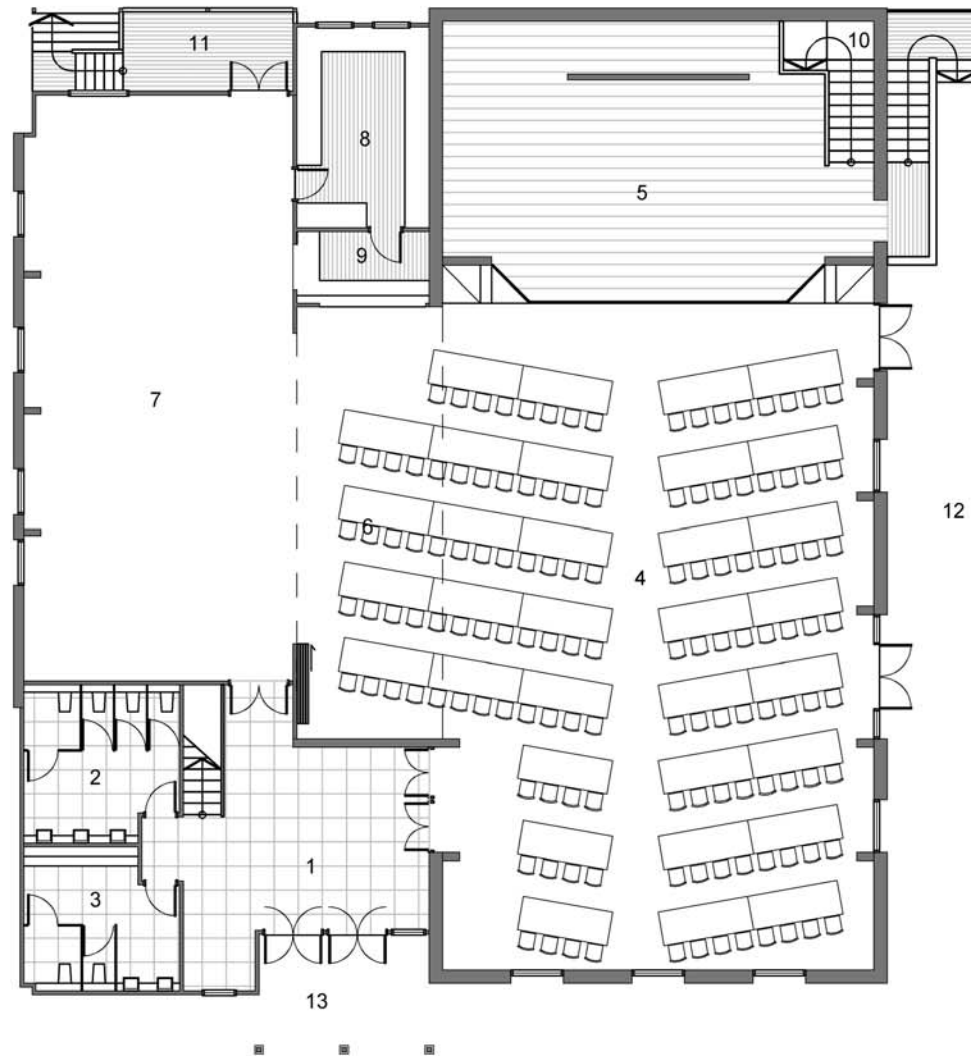
Date

June, 2009

# ATHENAEUM HALL - ARROWTOWN

1. Foyer
2. Womens Toilets
3. Mens Toilets
4. Hall
5. Stage
6. Alcove
7. Supper Room
8. Kitchen
9. Bar
10. Stair (to basement store)
11. Deck
12. Greenspace
13. Entry from Bukingham Street

Classroom Seating: 132



Scale 1 : 200

Floor Plan

Date

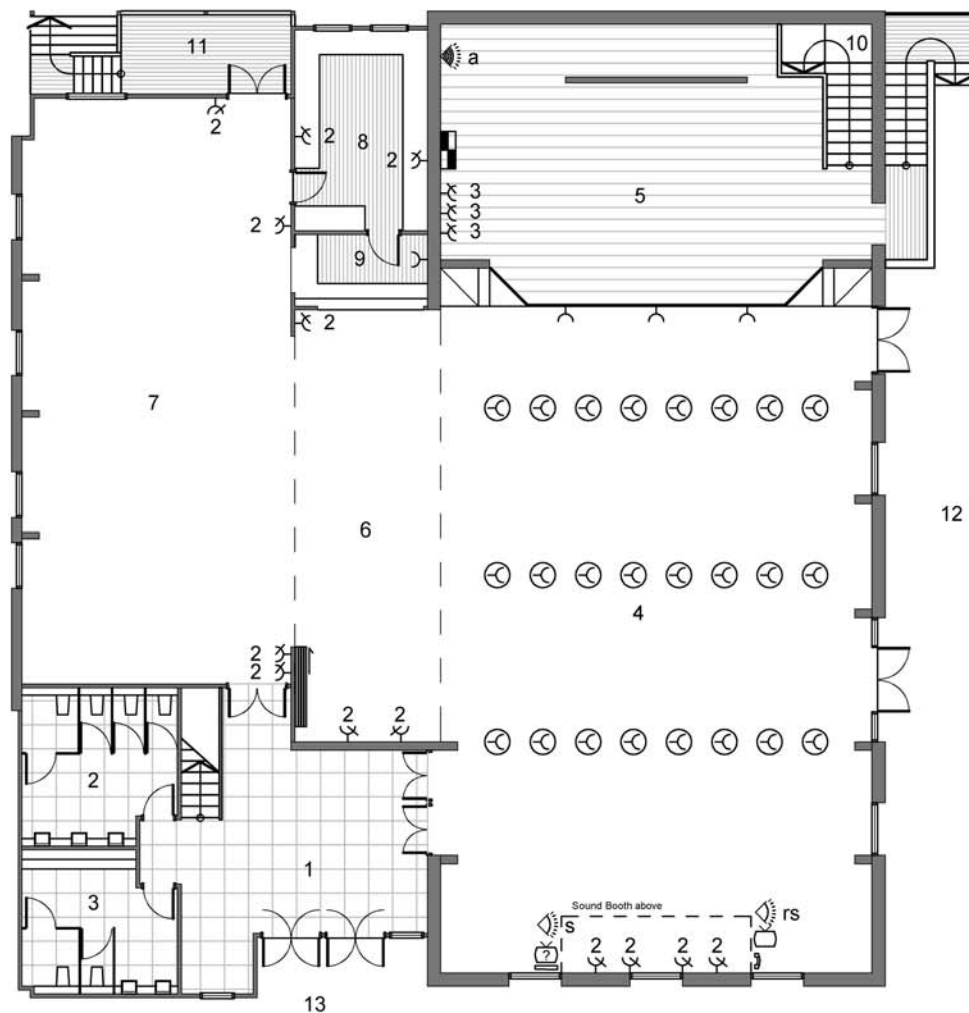
June, 2009

# ATHENAEUM HALL - ARROWTOWN



1. Foyer
2. Womens Toilets
3. Mens Toilets
4. Hall
5. Stage
6. Alcove
7. Supper Room
8. Kitchen
9. Bar
10. Stair (to basement store)
11. Deck
12. Greenspace
13. Entry from Bukingham Street

- ⌋ 240v Power x1
- ⌋ 2 240v Power x2
- ⌋ 3 240v Power x3
- ⊙ 240v Power Ceiling Mounted
- ⦿ s Sound Input
- ⦿ rs Return Stage Sound Outlet
- ⦿ a Amplifier
- ⦿ Video - Dressing Rm
- ⦿ Intercom
- ⦿ Computer Link to Stage
- ⦿ Sub Board, Fuses 10-16-20-32



Scale 1 : 200

Floor Plan

Date

June, 2009