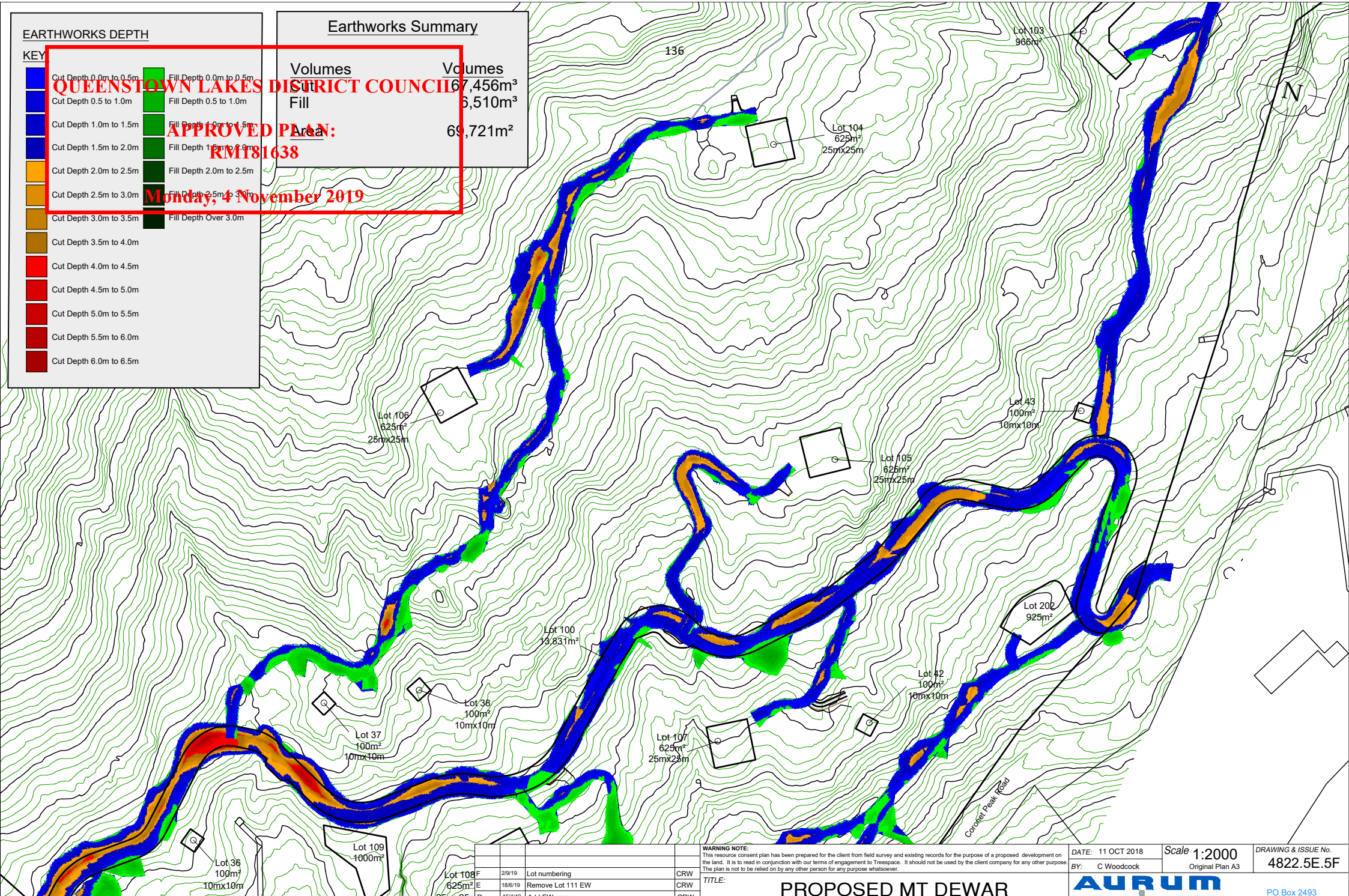


KEY

Monday, 4 November 2019

PLAN:

69,721m²



TITLE: _____

4822.5E.5F

PROPOSED MT DEWAR
SUBDIVISION - EARTHWORKS
TREESPACE - ARTHURS POINT

PO Box 2493
Wakatipu 9349
Ph 03 442 3466
Fax 03 442 3469
Email admin@ascl.co.nz

A person/company using Aurum Survey Consultants drawings and other data accepts the risk of:

1. using the drawings and other data in electronic form without requesting and checking them for accuracy against the original hard copy versions;
2. using the drawings or other data for any purpose not agreed to in writing by Aurum Survey Consultants.

APPROVED PLAN:
RM181638

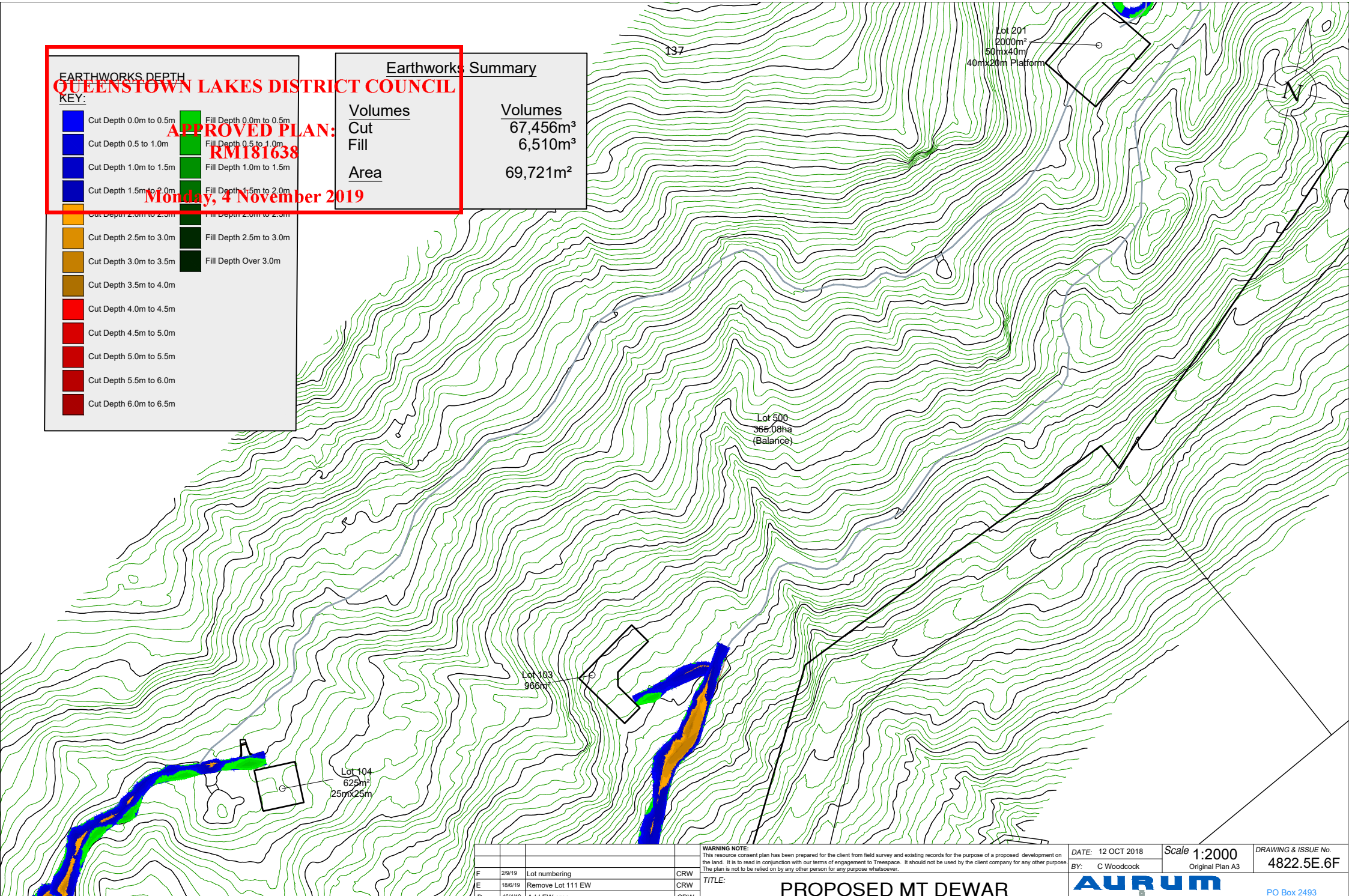
Monday, 4 November 2019

| | |
|------------------------|-------------------------|
| Cut Depth 0.0m to 0.5m | Fill Depth 0.0m to 0.5m |
| Cut Depth 0.5 to 1.0m | Fill Depth 0.5 to 1.0m |
| Cut Depth 1.0m to 1.5m | Fill Depth 1.0m to 1.5m |
| Cut Depth 1.5m to 2.0m | Fill Depth 1.5m to 2.0m |
| Cut Depth 2.0m to 2.5m | Fill Depth 2.0m to 2.5m |
| Cut Depth 2.5m to 3.0m | Fill Depth 2.5m to 3.0m |
| Cut Depth 3.0m to 3.5m | Fill Depth Over 3.0m |
| Cut Depth 3.5m to 4.0m | |
| Cut Depth 4.0m to 4.5m | |
| Cut Depth 4.5m to 5.0m | |
| Cut Depth 5.0m to 5.5m | |
| Cut Depth 5.5m to 6.0m | |
| Cut Depth 6.0m to 6.5m | |

Volumes

Cu
Fill

Volumes

$$\begin{array}{r} 67,456\text{m}^3 \\ 6,510\text{m}^3 \\ \hline 69,721\text{m}^2 \end{array}$$


| | | | |
|------|----------|-------------------|-----|
| | | | |
| F | 2/9/19 | Lot numbering | CRW |
| E | 18/6/19 | Remove Lot 111 EW | CRW |
| D | 16/4/19 | Add EW area | CRW |
| C | 29/10/18 | Amend layout | CRW |
| B | 17/10/18 | Amend colours | CRW |
| A | 12/10/18 | Initial release | CRW |
| REV. | DATE: | REVISION DETAILS: | BY: |

WARNING NOTE:
This resource consent plan has been prepared for the client from field survey and existing records for the purpose of a proposed development on the land. It is to read in conjunction with our terms of engagement to Treespace. It should not be used by the client company for any other purpose. The plan is not to be relied on by any other person for any purpose whatsoever.

TITLE:

PROPOSED MT DEWAR
SUBDIVISION - EARTHWORKS
TREESPACE - ARTHURS POINT

| | |
|-------------|-------------------|
| on oose. | DATE: 12 OCT 2018 |
| | BY: C Woodcock |

Scale 1:2000
Original Plan A3

| | |
|---------------------|------------|
| DRAWING & ISSUE No. | 4822.5E.6F |
|---------------------|------------|



PO Box 2493
Wakatipu 9349
Ph 03 442 3466
Fax 03 442 3469
Email admin@ascl.co.nz

A person/company using Aurum Survey Consultants drawings and other data accepts the risk of:

1. using the drawings and other data in electronic form without requesting and checking them for accuracy against the original hard copy versions;
2. using the drawings or other data for any purpose not agreed to in writing by Aurum Survey Consultants.

QUEENSTOWN LAKES DISTRICT COUNCIL





















APPROVED PLAN:

RM181638

Monday, 4 November 2019

EARTHWORKS DEPTH

KEY:

| | | | |
|---|------------------------|---|-------------------------|
|  | Cut Depth 0.0m to 0.5m |  | Fill Depth 0.0m to 0.5m |
|  | Cut Depth 0.5 to 1.0m |  | Fill Depth 0.5 to 1.0m |
|  | Cut Depth 1.0m to 1.5m |  | Fill Depth 1.0m to 1.5m |
|  | Cut Depth 1.5m to 2.0m |  | Fill Depth 1.5m to 2.0m |
|  | Cut Depth 2.0m to 2.5m |  | Fill Depth 2.0m to 2.5m |
|  | Cut Depth 2.5m to 3.0m |  | Fill Depth 2.5m to 3.0m |
|  | Cut Depth 3.0m to 3.5m |  | Fill Depth Over 3.0m |
|  | Cut Depth 3.5m to 4.0m | | |
|  | Cut Depth 4.0m to 4.5m | | |
|  | Cut Depth 4.5m to 5.0m | | |
|  | Cut Depth 5.0m to 5.5m | | |
|  | Cut Depth 5.5m to 6.0m | | |
|  | Cut Depth 6.0m to 6.5m | | |

Earthworks Summary

Volumes

Cut

Fill

Area

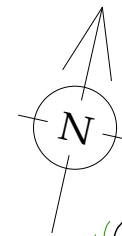
Volumes

67,456m³

6,510m³

69,721m²

138



Access to tie into existing constructed access -
consented and constructed under
RM070228(upgrades may be required for
compliance)

Lot 500
365.08ha
(Balance)

Lot 102
625m²
25mx25m

Lot 101
625m²
25mx25m

Lot 201
2000m²
50mx40m
40mx20m Platform

WARNING NOTE:
This resource consent plan has been prepared for the client from field survey and existing records for the purpose of a proposed development on the land. It is to be read in conjunction with our terms of engagement to Treespace. It should not be used by the client company for any other purpose. The plan is not to be relied on by any other person for any purpose whatsoever.

TITLE:

**PROPOSED MT DEWAR
SUBDIVISION - EARTHWORKS
TREESPACE - ARTHURS POINT**

DATE: 12 OCT 2018
BY: C Woodcock

Scale **1:2000**
Original Plan A3

DRAWING & ISSUE No.
4822.5E.7F



PO Box 2493
Wakatipu 9349
Ph 03 442 3466
Fax 03 442 3469
Email admin@ascl.co.nz

QUEENSTOWN LAKES DISTRICT COUNCIL



APPROVED PLAN:
RM181638

KEY: Monday, 4 November 2019



Tree Planting - each symbol represents a group of 20 trees, 15 years after planting



Indicative reforestation areas
(after 50 years of tree planting and control)



Existing beech forest



Site boundary



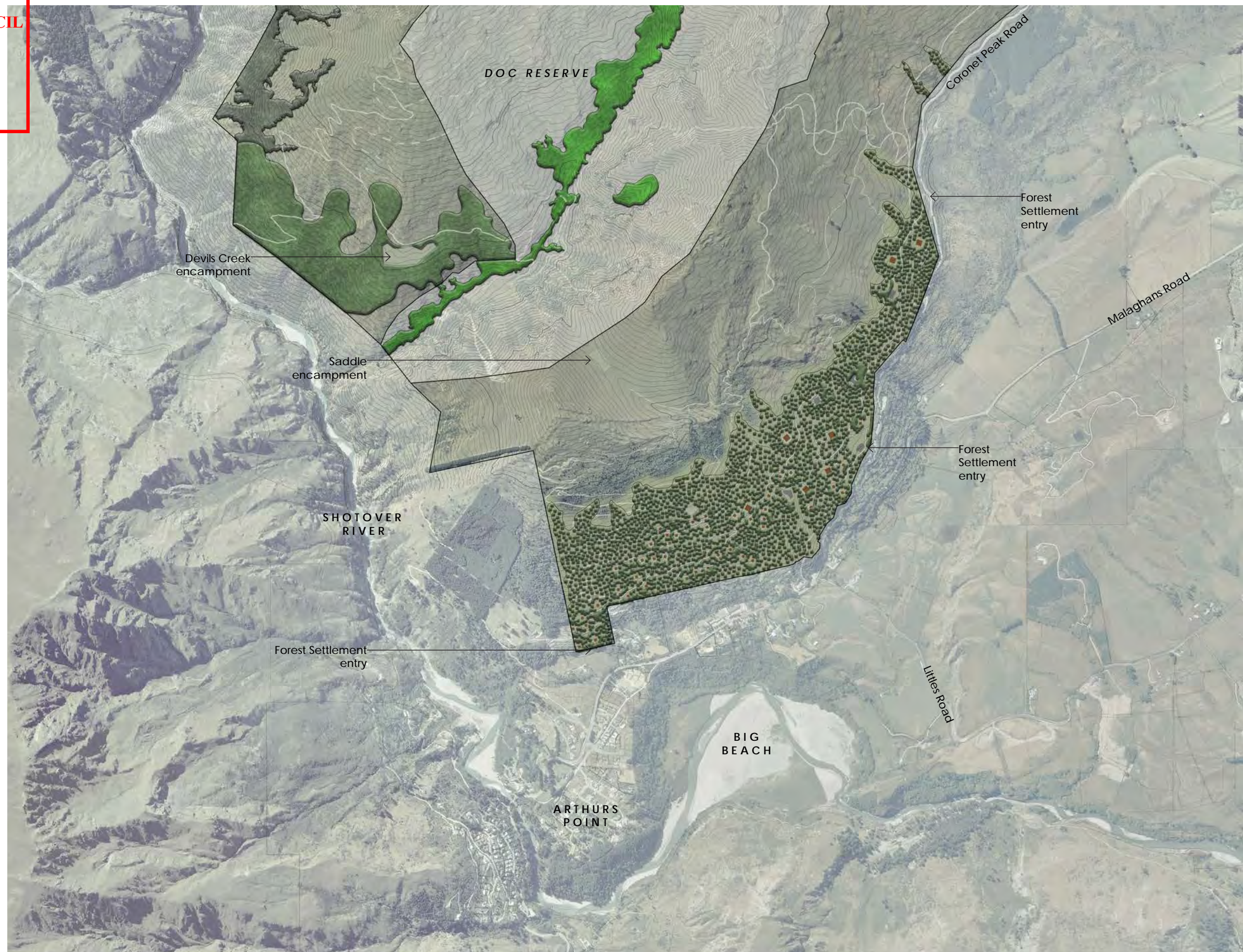
Consented encampment areas



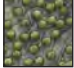






Proposed forest settlement area

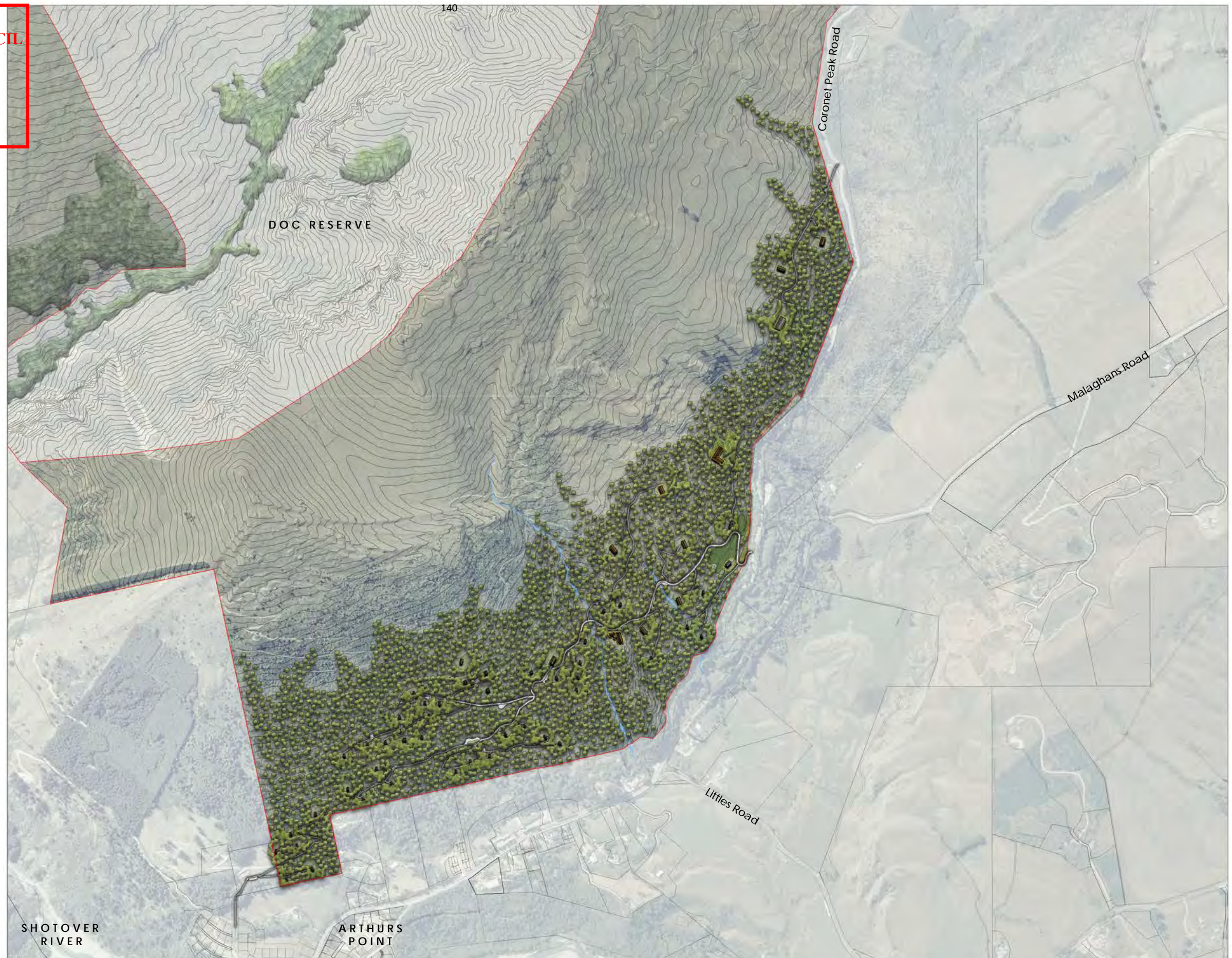


Existing and proposed trails





-  Tree Planting - each symbol represents a group of 20 trees, 15 years after planting
-  Proposed chalet sites 25m x 25m
-  Proposed cabin sites 10m x 10m
-  Consented buildings (grey roofs) and consented landscaping
-  Proposed roads and driveways
-  Existing waterways
-  Site boundary



QUEENSTOWN LAKES DISTRICT COUNCIL



APPROVED PLAN:
RM181638

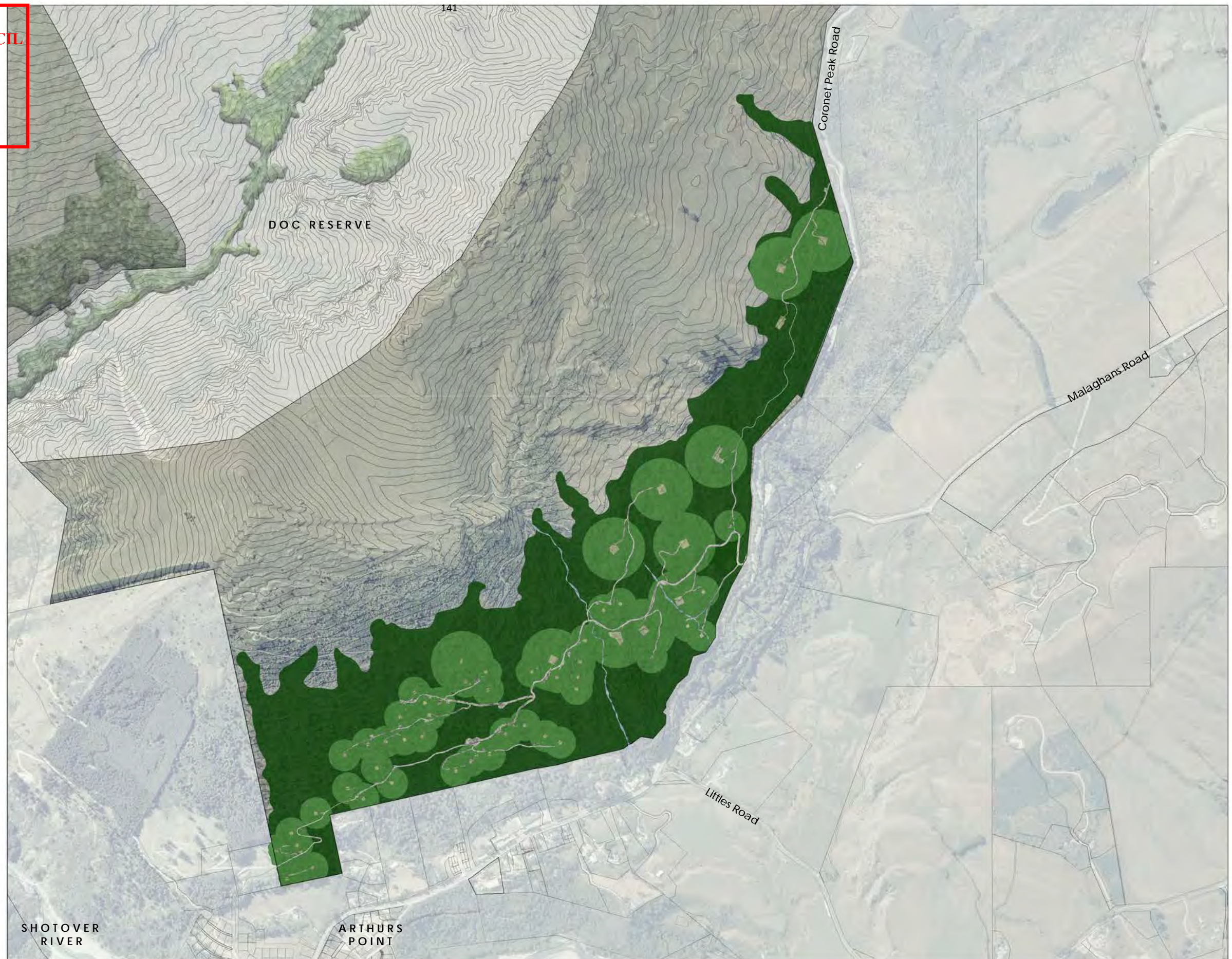
KEY: Monday, 4 November 2019



Bush Covenant Areas
Infill Planting



Bush Covenant Areas
Reforestation Zones (RFZ)



QUEENSTOWN LAKES DISTRICT COUNCIL

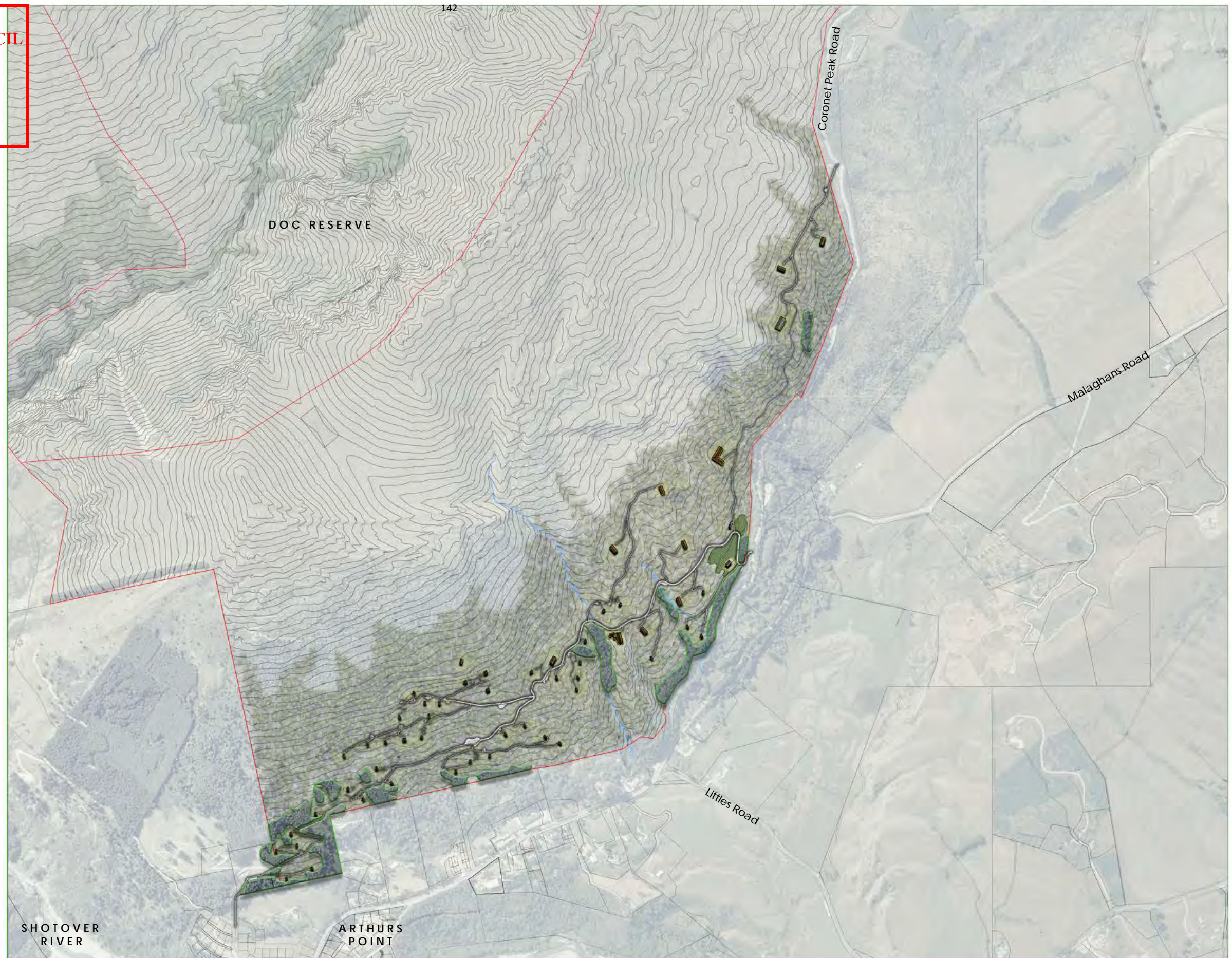


APPROVED PLAN:
RM181638

KEY: Monday, 4 November 2019



Existing conifer forest to be retained for visual mitigation purposes while successive reforestation tree planting establishes.







QUEENSTOWN LAKES DISTRICT COUNCIL

APPROVED PLAN:
RM181638

KEY: Monday, 4 November 2019

Front Face receiving environment

- 

Existing building platforms
- 

Consented visual mitigation indigenous vegetation planting







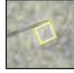
QUEENSTOWN LAKES DISTRICT COUNCIL


APPROVED PLAN:
RM181638


KEY: Monday, 4 November 2019


- 

Proposed chalet sites 25m x 25m
- 

Proposed cabin sites 10m x 10m and reforestation areas
- 

Consented building platforms (yellow outline)
- 

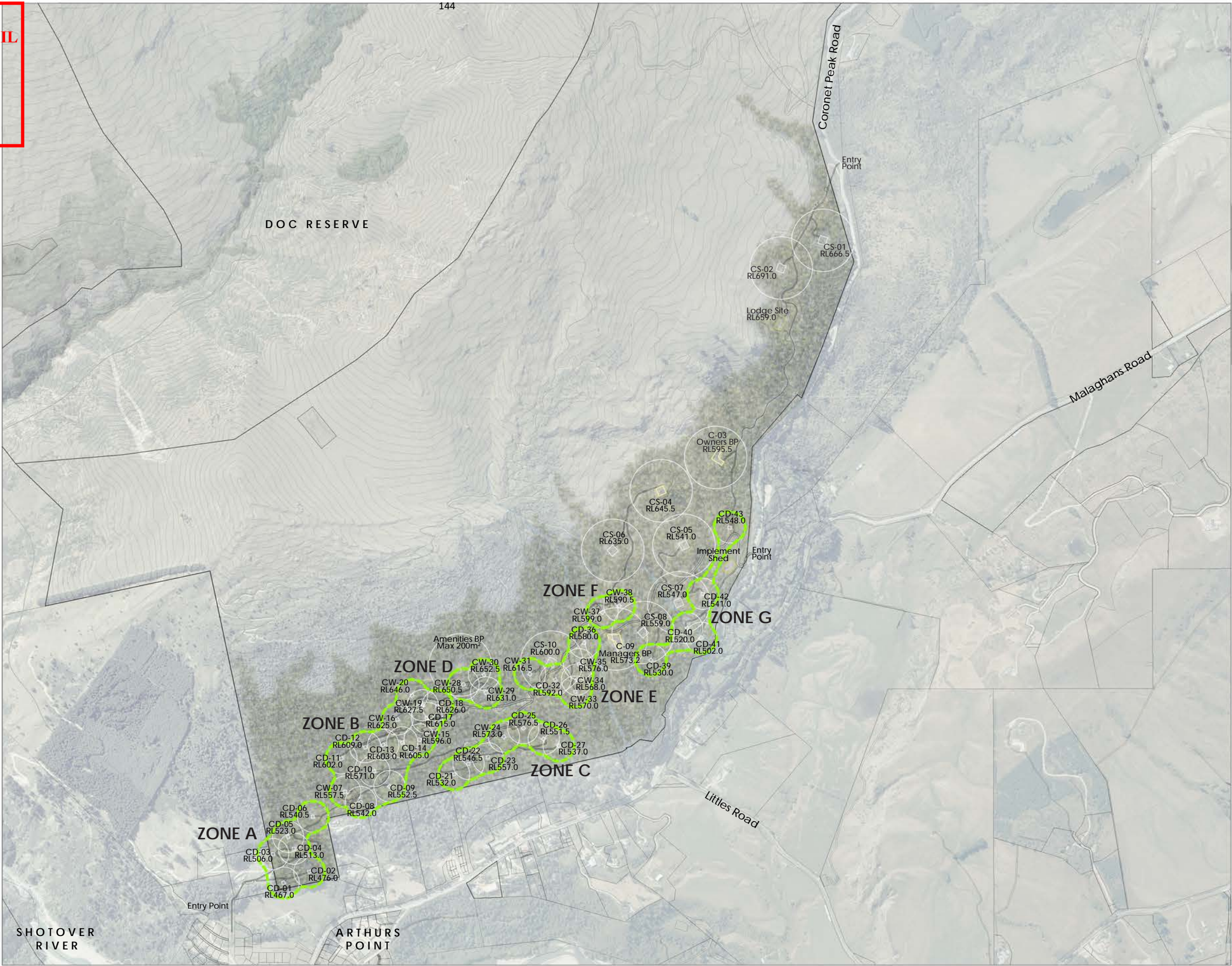
Cabin zones
- 

Cabin and chalet reforestation areas
- 

Cabin and chalet numbers and proposed Registered Level
 CD - Cabin drive in
 CW - Cabin walk in
 C - Chalet
 CS - Chalet with maximum 350m² lot coverage restriction

Cabin Zones

| | | | |
|--------|--|--------|--|
| Zone A | CD-01 CD-02 CD-03 CD-04 CD-05 CD-06 | Zone D | CW-28 CW-29 CW-30 |
| Zone B | CW-07 CD-08 CD-09 CW-10 CD-11 CD-12 CD-13 CD-14 CW-15 CW-16 CD-17 CD-18 CW-19 CW-20 | Zone E | CW-31 CD-32 CW-33 CW-34 CW-35 CD-36 |
| Zone C | CD-21 CD-22 CD-23 CW-24 CD-25 CD-26 CD-27 | Zone F | CW-37 CW-38 |
| | | Zone G | CD-39 CD-40 CD-41 CD-42 CD-43 |

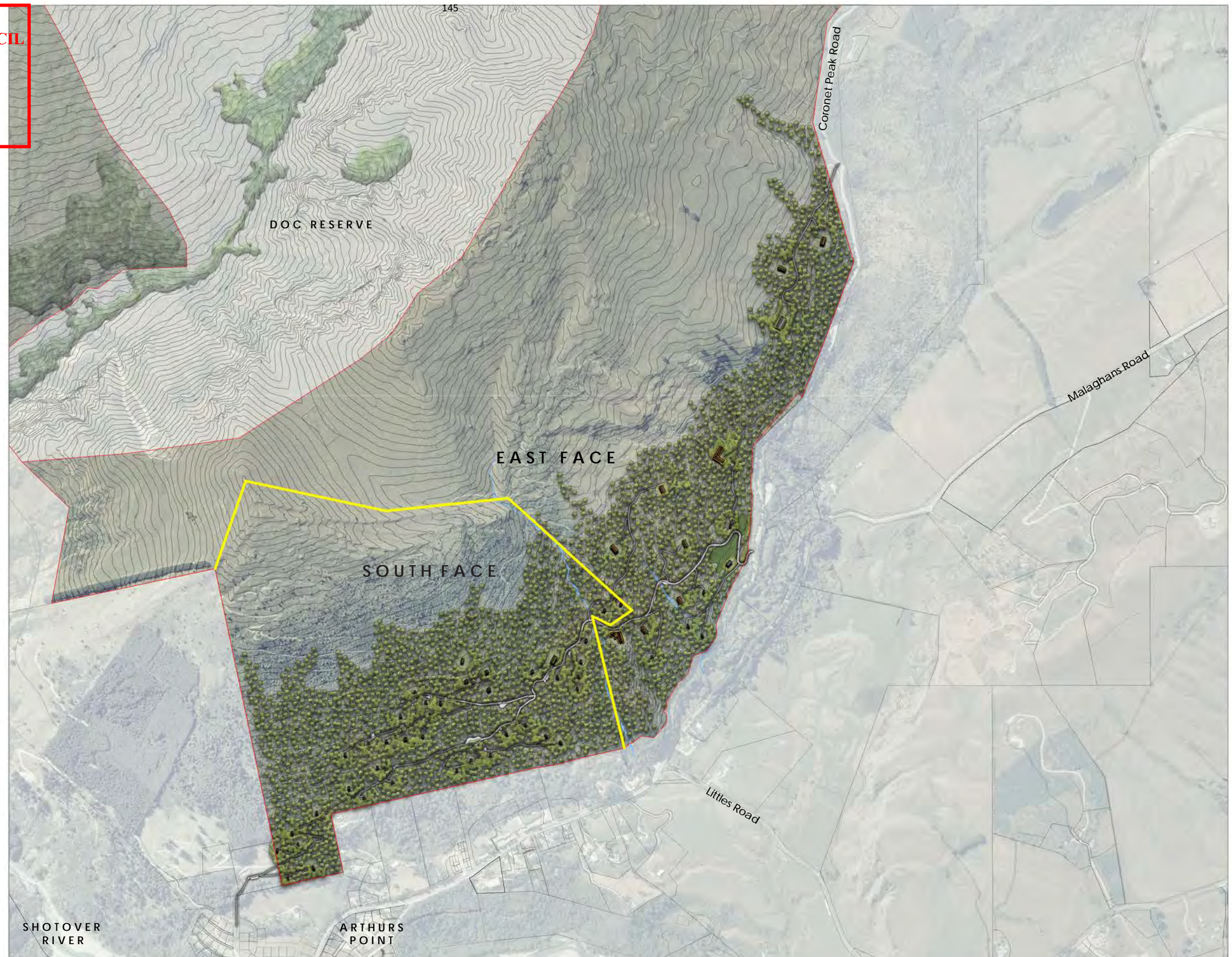


QUEENSTOWN LAKES DISTRICT COUNCIL



APPROVED PLAN:
RM181638

Monday, 4 November 2019



-  Tree Planting - each symbol represents a group of 20 trees, 15 years after planting
-  Tree planting groups within cabin and chalet radius
-  Tree planting groups between cabin and chalet radius and below 650m contour
-  Tree planting groups above 650m contour
-  Tree planting for visual mitigation purposes
-  Proposed chalet sites (25m x 25m) with indicative dwelling
-  Proposed cabin sites (10m x 10m) with indicative dwelling
-  Existing building platforms and indicative dwellings (grey roofs)
-  Proposed roads, parking areas, trails and indicative paths to CW cabin sites
-  Existing surface water
-  Site boundary

Note: Each tree symbol represents a group of 20 trees, 15 years after tree planting





-  Tree Planting - each symbol represents a group of 20 trees, 15 years after planting
-  Tree planting groups within cabin and chalet radius
-  Tree planting groups between cabin and chalet radius and below 650m contour
-  Tree planting groups above 650m contour
-  Tree planting for visual mitigation purposes
-  Proposed chalet sites (25m x 25m) with indicative dwelling
-  Proposed cabin sites (10m x 10m) with indicative dwelling
-  Existing building platforms and indicative dwellings (grey roofs)
-  Proposed roads, parking areas, trails and indicative paths to CW cabin sites
-  Existing surface water
-  Site boundary
-  Setbacks

Note: Each tree symbol represents a group of 20 trees, 15 years after tree planting





Proposed cabin sites (10m x 10m) with
proposed RL
CD = Drive in and CW = Walk in



Proposed chalet sites (25m x 25m)
C= site is building platform
CS= max 350m² site coverage



Reforestation radius from cabins (50m)



Reforestation radius from chalets (100m)





Tree Planting - each symbol represents a group of 20 trees, 15 years after planting



Tree planting groups within cabin and chalet radius



Tree planting groups between cabin and chalet radius and below 650m contour



Tree planting groups above 650m contour



Tree planting for visual mitigation purposes



Proposed chalet sites (25m x 25m) with indicative dwelling



Proposed cabin sites (10m x 10m) with indicative dwelling



Existing building platforms and indicative dwellings (grey roofs) and approved planting



Proposed roads, parking areas, trails and indicative paths to CW cabin sites



Proposed reforestation nursery and food production area



Existing surface water



Site boundary





Tree Planting - each symbol represents a group of 20 trees, 15 years after planting



Tree planting groups within cabin and chalet radius



Tree planting groups between cabin and chalet radius and below 650m contour



Tree planting groups above 650m contour



Tree planting for visual mitigation purposes



Proposed chalet sites (25m x 25m) with indicative dwelling



Proposed cabin sites (10m x 10m) with indicative dwelling



Existing building platforms and indicative dwellings (grey roofs) and approved planting



Proposed roads, parking areas, trails and indicative paths to CW cabin sites



Proposed reforestation nursery and food production area



Existing surface water



Site boundary



Setback





Proposed cabin sites (10m x 10m) with
proposed RL
CD = Drive in and CW = Walk in



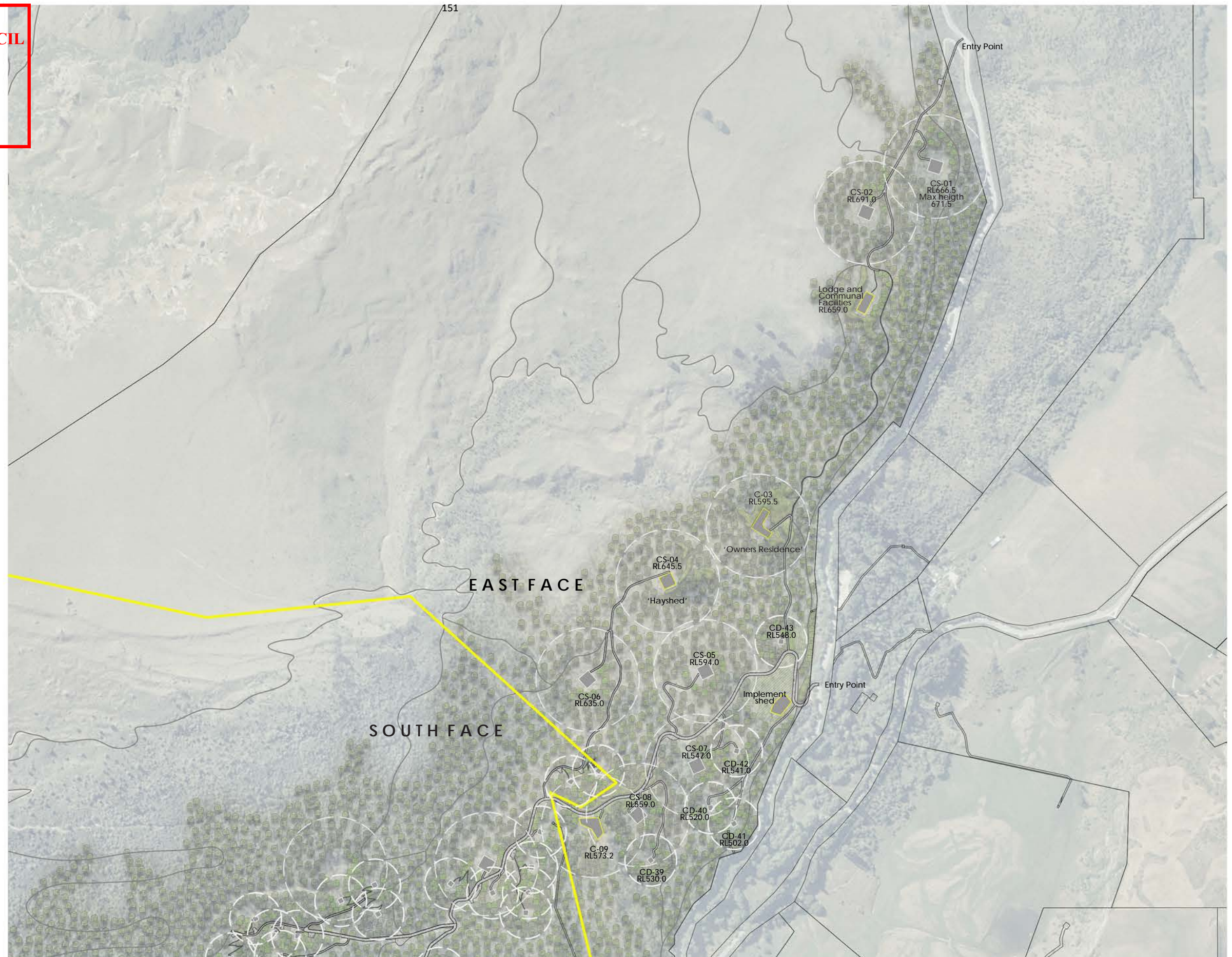
Proposed chalet sites (25m x 25m)
C= site is building platform
CS= max 350m² site coverage



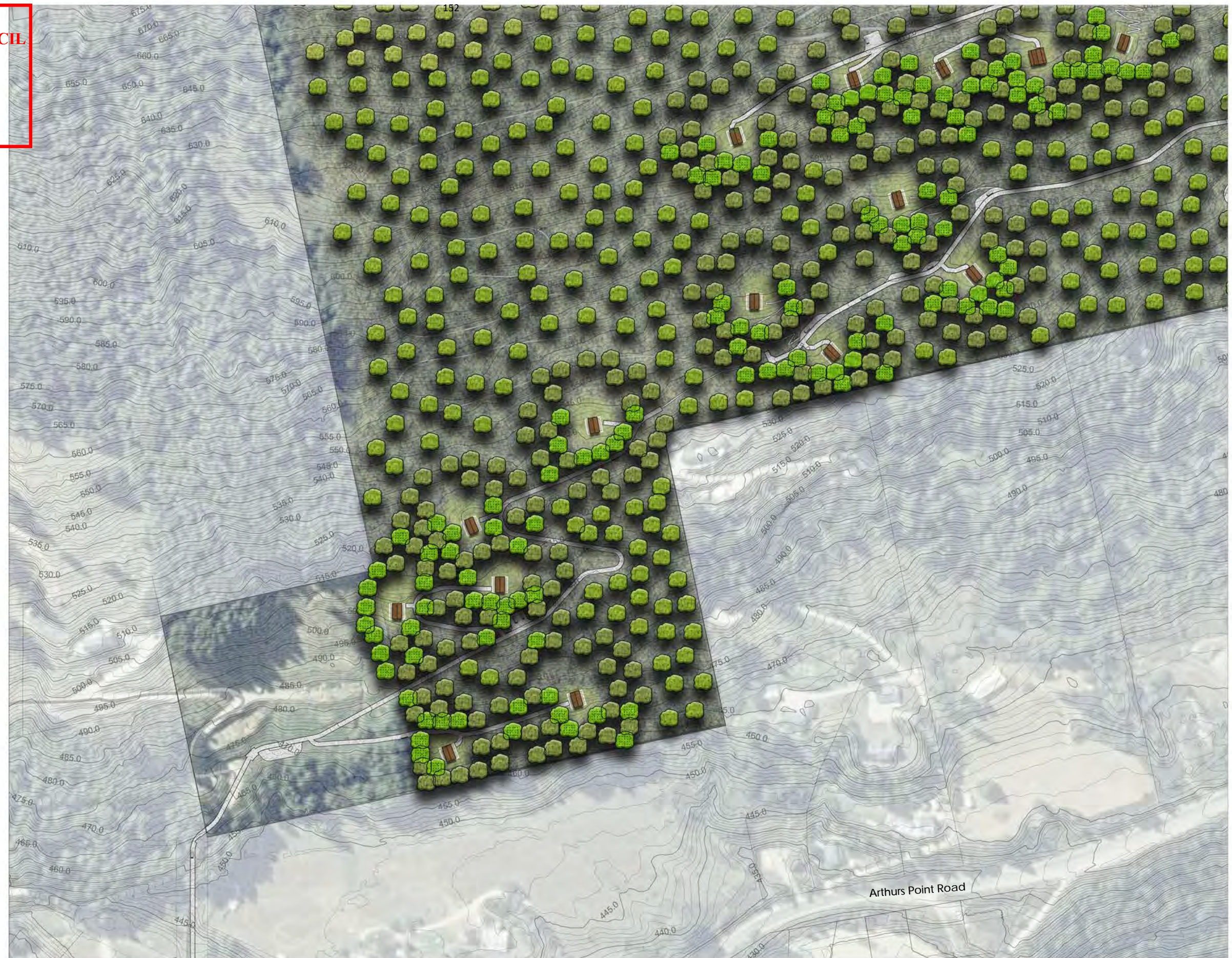
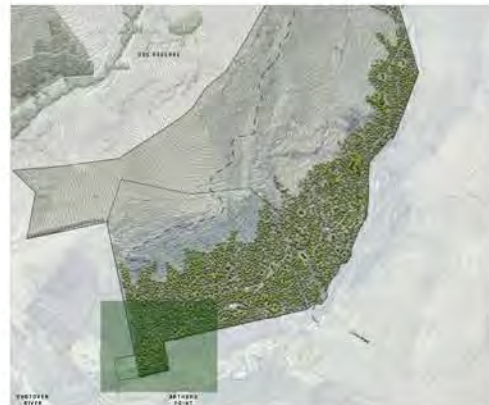
Reforestation radius from cabins (50m)



Reforestation radius from chalets (100m)



-  Tree Planting - each symbol represents a group of 20 trees, 15 years after planting
-  Tree planting groups within cabin and chalet radius
-  Tree planting groups between cabin and chalet radius and below 650m contour
-  Tree planting groups above 650m contour
-  Tree planting for visual mitigation purposes
-  Proposed cabin sites (10m x 10m) with indicative dwelling
-  Proposed roads, parking areas, trails and indicative paths to CW cabin sites
-  Site boundary





Tree Planting - each symbol represents a group of 20 trees, 15 years after planting












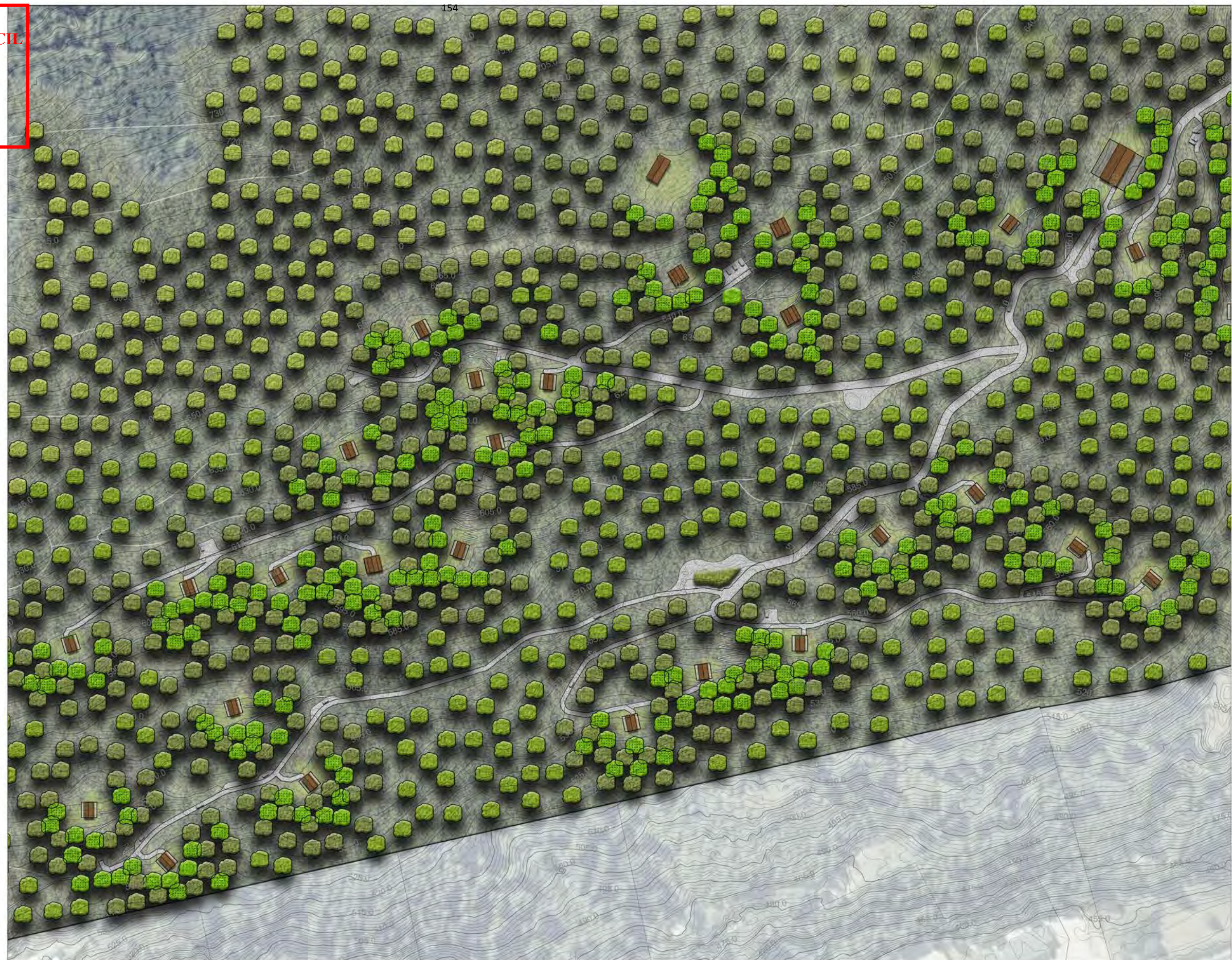
Proposed cabin sites (10m x 10m) with proposed RL
CD = Drive in and CW = Walk in









Reforestation radius from cabins (50m)



-  Tree Planting - each symbol represents a group of 20 trees, 15 years after planting
-  Tree planting groups within cabin and chalet radius
-  Tree planting groups between cabin and chalet radius and below 650m contour
-  Tree planting groups above 650m
-  Tree planting for visual mitigation
-  Proposed chalet sites (25m x 25m) with indicative dwelling
-  Proposed cabin sites (10m x 10m) with indicative dwelling
-  Proposed roads, parking areas, trails and indicative paths to CW cabin sites
-  Site boundary



-  Tree Planting - each symbol represents a group of 20 trees, 15 years after planting
-  Proposed cabin sites (10m x 10m) with proposed RL
CD = Drive in and CW = Walk in
-  Reforestation radius from cabins (50m)
-  Proposed chalet sites (25m x 25m)
C= site is building platform
CS= max 350m² site coverage
-  Reforestation radius from cabins (50m)
-  Reforestation radius from chalets (100m)



-  Tree Planting - each symbol represents a group of 20 trees, 15 years after planting
-  Tree planting groups within cabin and chalet radius
-  Tree planting groups between cabin and chalet radius and below 650m contour
-  Tree planting groups above 650m contour
-  Tree planting for visual mitigation purposes
-  Proposed chalet sites (25m x 25m) with indicative dwelling
-  Proposed cabin sites (10m x 10m) with indicative dwelling
-  Existing building platforms with indicative dwelling
-  Proposed roads, parking areas, trails and indicative paths to CW cabin sites
-  Site boundary

