

QUEENSTOWN LAKES DISTRICT COUNCIL

**APPROVED PLAN:
RM171177**

Monday, 16 April 2018

PATERSONPITTSGROUP

Your Land Professionals
www.ppgroup.co.nz
0800 PPGROUP



WANAKA BRANCH
19 Reece Crescent
or P.O. Box 283
Wanaka 9343
T 03 443 0110
E wanaka@ppgroup.co.nz

Client & Location:

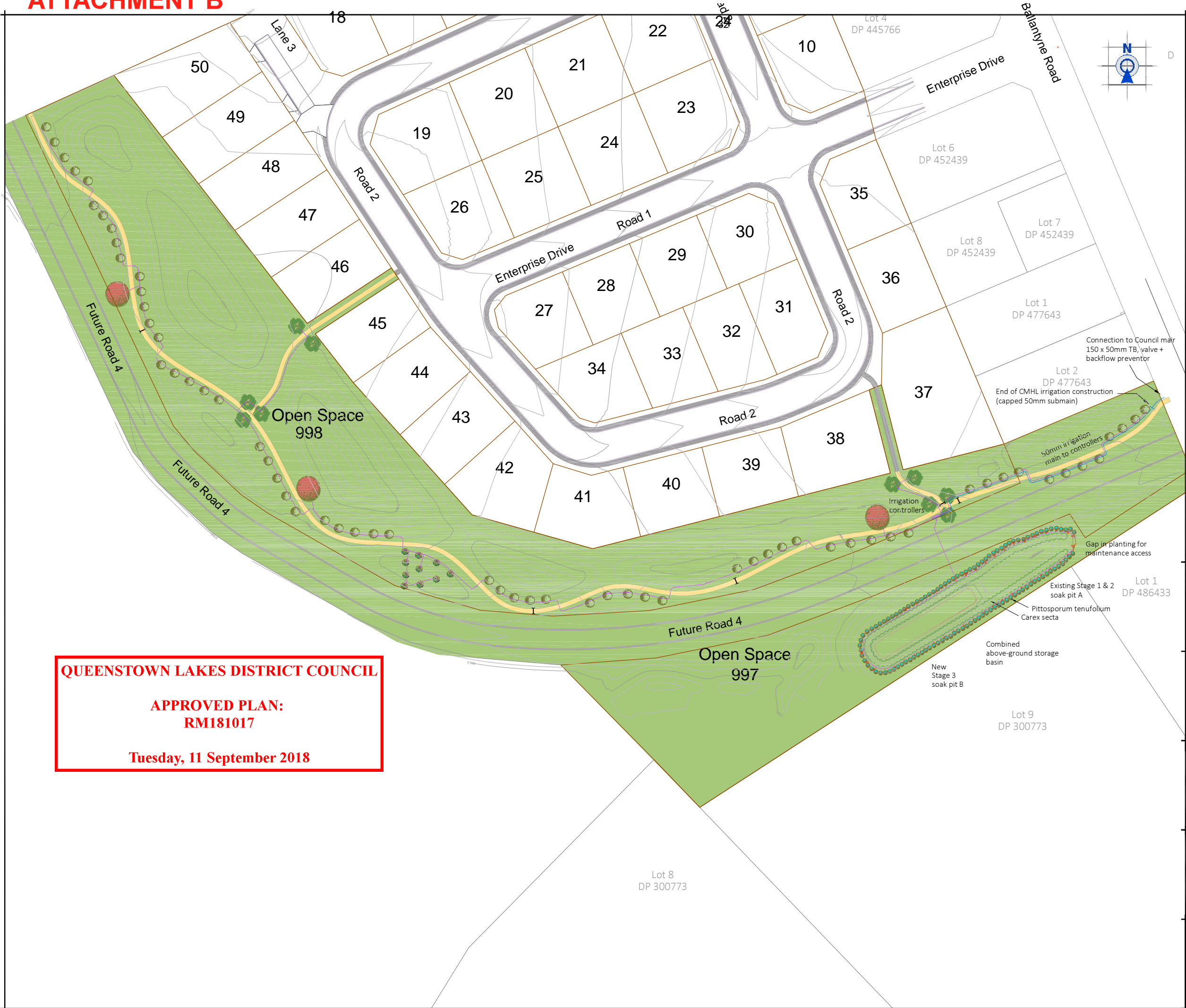
**Orchard Road Holdings Ltd.
Ballantyne Ridge Stage 3
Wanaka**

Purpose & Drawing Title:

**Scheme Plan
Lots 10-50 & 996 - 999
Being Subdivision of
Lot 99 DP 445766 & Lot 3 DP374697**

© COPYRIGHT. This drawing, content and design remains the property of Paterson Pitts Group Limited and may not be reproduced in part or full or altered without the written permission of Paterson Pitts Group Limited. This drawing and its content shall only be used for the purpose for which it is intended. No liability shall be accepted by Paterson Pitts Group Limited for its unauthorized use.

Surveyed by:	xxx	Original Size:	Scale:
Designed by:	xxx	A3	1:5000 @ A3
Drawn by:	SJD		
Checked by:	xxx		
Approved by:	xxx		
Job No:	W4400	Sheet No:	Revision No:
		100	G
			Date Created:
			21/02/2018



- NOTES
1. The contractor shall be responsible for locating all existing services prior to commencement of works. The contractor shall make good at their own expense any damage to existing services
 2. Levels are in terms of Dunedin Vertical Datum 1958
 3. All works are to be installed as per QLDC Land Development and Subdivision Code of Practice. Standard drawings are available from the Engineer
 4. All pipe dimensions are MINIMUM INTERNAL diameter unless otherwise stated

- Landscaping Key
- Existing lots
 - Stage 3 lots
 - Design Contour Major (2.0m)
 - Design Contour Minor (0.5m)
 - Footpaths - 2m width (AP20)
 - Open space grassed areas
 - Quercus robur 'Fastigata' x 62 (English Oak) Up to 30m
 - Quercus Coccinea (Scarlet Oak)
 - Ulmus x Hollandica lobel (hybrid elm)
 - Carpinus betulus fastigiata (upright hornbeam)
 - Pittosporum tenuifolium @ 2m spacing (top of basin batter)
 - Carex Secta on basin batters @ 600mm spacing
 - Mounds grassed. Gradient suitable for ride-on mowing (Max 1 in 5)
 - Irrigation lines (32mm)
 - 50mm irrigation main to controllers
 - Culvert

Revisions:
D: 1 x Irrigation take-off removed & controllers shifted
D1: Road 4 alignment altered. Minor path realignment
D4: Soak pit redesign. (Required changes to landscape planting)

PATERSONPITTSGROUP
Surveying • Planning • Engineering
Your Land Professionals
www.pggroup.co.nz
0800 PPGROUP

WANAKA
19 Reece Crescent
or P.O. Box 283
Wanaka 9343
T 03 443 0110
E wanaka@pggroup.co.nz

© COPYRIGHT. This drawing, content and design remains the property of Paterson Pitts Limited Partnership and may not be reproduced in part or full or altered without the written permission of Paterson Pitts Limited Partnership. This drawing and its content shall only be used for the purpose for which it is intended. No liability shall be accepted by Paterson Pitts Limited Partnership for its unauthorized use.

Client & Location:
Orchard Road Holdings Ltd
Ballantyne Ridge Stage 3
Enterprise Drive
Wanaka

Purpose & Drawing Title:
Engineering Drawings
Open Space Zone
Landscape & Irrigation Layout

Surveyed by:	lida	Original Size:	Scale:
Designed by:	jke/bm	A1	1:1500 @ A3
Drawn by:	bm		
Checked by:	sjd		
Approved by:	sjd		
Job No:	W4400	Sheet No:	700
		Revision No:	D4
		Date Created:	16/07/2018

QUEENSTOWN LAKES DISTRICT COUNCIL

APPROVED PLAN:
RM181017

Tuesday, 11 September 2018

FOR RESOURCE CONSENT



project

Bright Skies SHA

client

BSL Ltd

job

Job#

COMMON

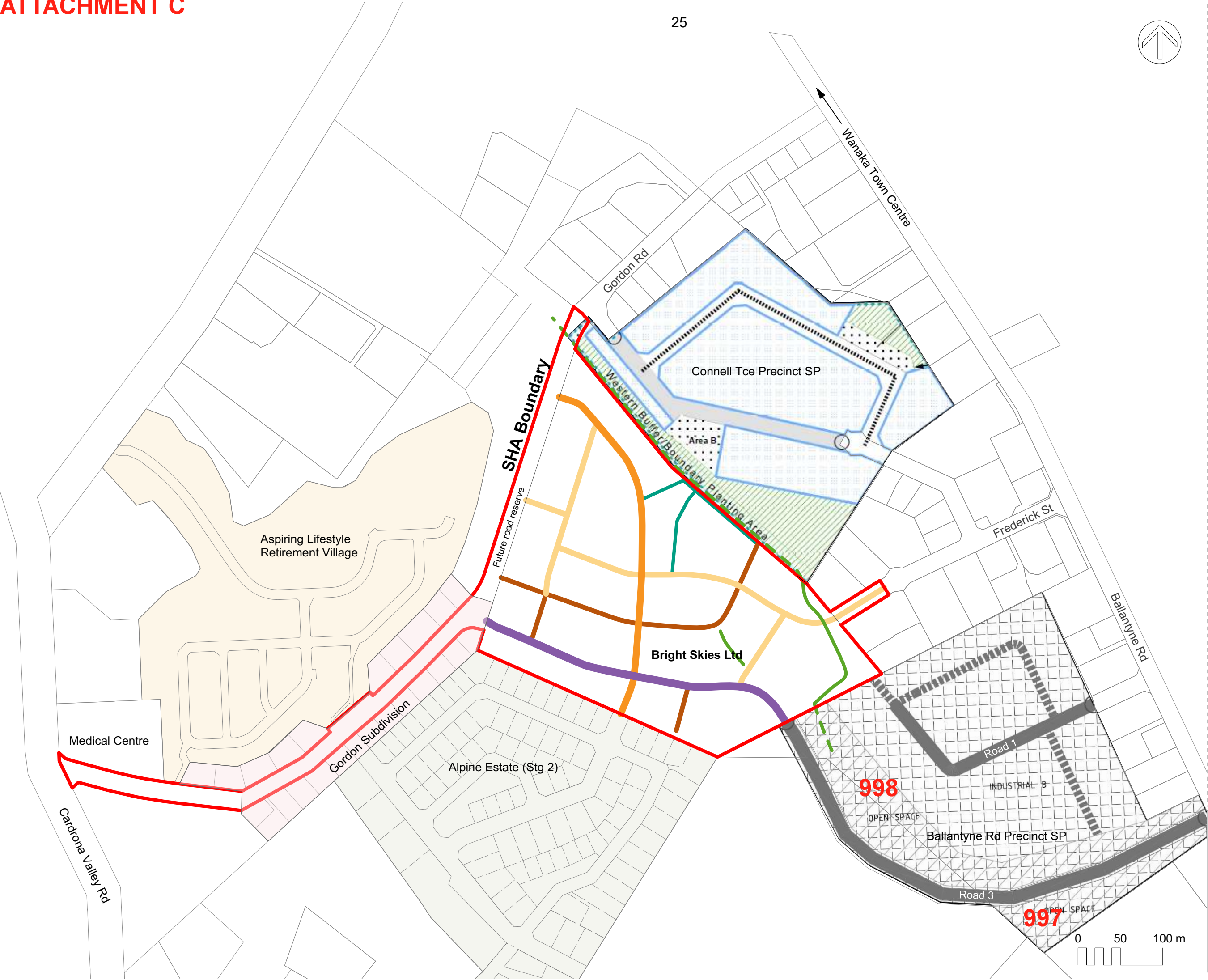
GROUND.

office@cgstudio.co.nz

Auckland, NZ. T (+64) 9 302 2200

www.cgstudio.co.nz

Notes:



© Copyright
The concepts & information contained on this plan are the copyright of Common Ground Studio Ltd. Use or copying of the information on this plan without written permission of Common Ground Studio constitutes an infringement of copyright.
Disclaimer:
This plan has been prepared on behalf of and for the client. Common Ground Studio accepts no liability or responsibility in respect upon this plan by any third party.

file	BRIGHT SKIES.vwx		
print date	9/5/18		
rev	date	details	by
1	22/9/17	Block concept - 1st cut	tk
2	8/5/18	Block 11 revision	tk

scale: 1:4000 @ A3

Plan #

CO 1c

Page