

Wanaka Community Board**16 August 2018****Report for Agenda Item: 3****Chair's Report****Purpose**

To provide the Board with an update on projects of interest and previous actions and to address other matters not listed elsewhere on the agenda.

Recommendations

That the Wanaka Community Board:

1. **Note** the contents of this report; and
2. **Agree** to give the Upper Clutha Tracks Trust Affected Party Approval for the construction of an accessible ramp to the suspension bridge over the Hawea River at Albert Town.

Prepared by:



Quentin Smith, Wanaka Community Board Chair
8 August 2018

General update on activities of the Wanaka Community Board

1. The Upper Clutha Tracks Trust has applied for consent to replace the stairs to the swing bridge over the Clutha River with an accessible ramp.
2. The suspension bridge over the Hawea River was constructed by the Upper Clutha Tracks Trust as part of the Hawea River Track in 2009. Access to the bridge on the Albert Town side is currently via a steep set of steps which are difficult to negotiate with a bicycle or pushchair and impossible in a wheelchair.
3. Since 2016 the Trust has been focussing on the accessibility to all of the tracks in the Upper Clutha and has been fundraising and working on a design to enable access to the bridge. The Trust now has plans for this ramp and is seeking resource consent to construct. It needs Affected Party Approval from the Council as it will be constructed from a point in the reserve beside the river to the bridge. Attached is a plan of a proposal and a photograph modelling the shape and position of the accessible ramp.

Wanaka Masterplan

4. It is intended to provide a brief update of this nature about this project for all Wanaka Community Board meetings in the Chair's report.

5. The Queenstown Lakes District Council approved the establishment report on 26 July 2018 allowing the project to progress to the next stage.
6. NZTA have approved the Point of Entry and given verbal support of the Strategic Case with formal approval expected next week. This establishes NZTA's commitment to the Programme Business Case.
7. The Network Operating Framework was finalised in early August following feedback from stakeholders. This document will inform the process going forward.
8. The consultant procurement documentation is currently being prepared and is expected to go to market by the end of August 2018.
9. An early engagement communications plan has been prepared with the intention that the communities' feedback will inform the visioning workshop scheduled for end of October 2018.

Wanaka Recreation Centre/Wanaka Community Pool

10. Since its opening on 10 June, there have been more than 15,000 visits to the new pool facility at the Wanaka Recreation Centre.
11. A 10-week social volleyball league began at Wanaka Recreation Centre on Monday 13 August.
12. Regular Wednesday morning sessions for seniors at Wanaka Recreation Centre continue to be well-attended and well-received.
13. The fifth annual Upper Clutha Festival of Sport and Recreation will take place at Wanaka Recreation Centre on Sunday 16 September.
14. Hundreds of international athletes, coaches and other team members will be based in Wanaka for the Audi Quattro Winter Games NZ (24 August – 8 September).

Ballantyne Road Business Case Update

15. The Strategic Business Case has been approved the project is now entering the next stage, a Single Stage Business Case. In this stage the project moves from being an idea to a concept where details such as seal extent, widening/flattening needed and the speed limit are considered.

Regular project reports

16. The following project updates are attached for the information of the Board:
 - Property and Infrastructure Project Summary (**Attachment A**)
 - Minor Improvement Projects (**Attachment B**)
 - Parks and Reserves Capital Programme and Renewals (**Attachment C**)

Actions from previous meeting

17. Actions on items considered at the previous meeting of the Board have been progressed as detailed below.

Agenda item	Update
1. Parkrun New Zealand Ltd – New Licence Notification for Wanaka Run	The application was publicly notified on 19 July 2018 and submissions close on 20 August 2018.
2. Affected Person's Approval - CCR Ltd, New Wanaka Reception Building	At the time of writing, staff are liaising with the applicant regarding the requirements of the Urban Design panel feedback.

Liaison positions, community associations, and Council meeting updates

18. Members are invited to report on the Board-related activities they have been involved in since the previous meeting, and Councillors are asked to comment on any matters of interest from recent Council meetings.

Attachments

- A Views of proposed ramp and plans
- B Property and Infrastructure Project Summary
- C Minor Improvement Projects
- D Parks and Reserves Capital Programme and Renewals

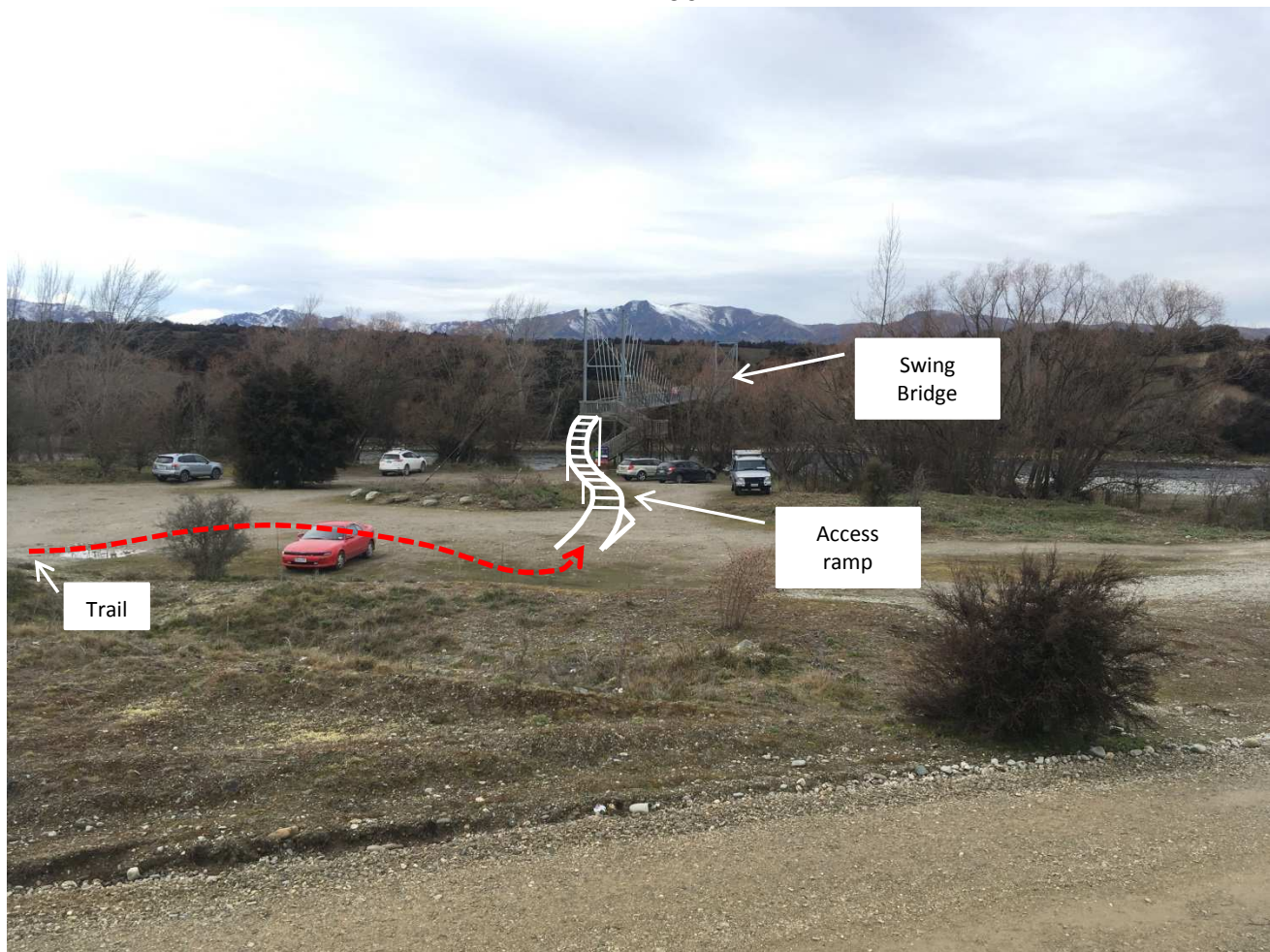
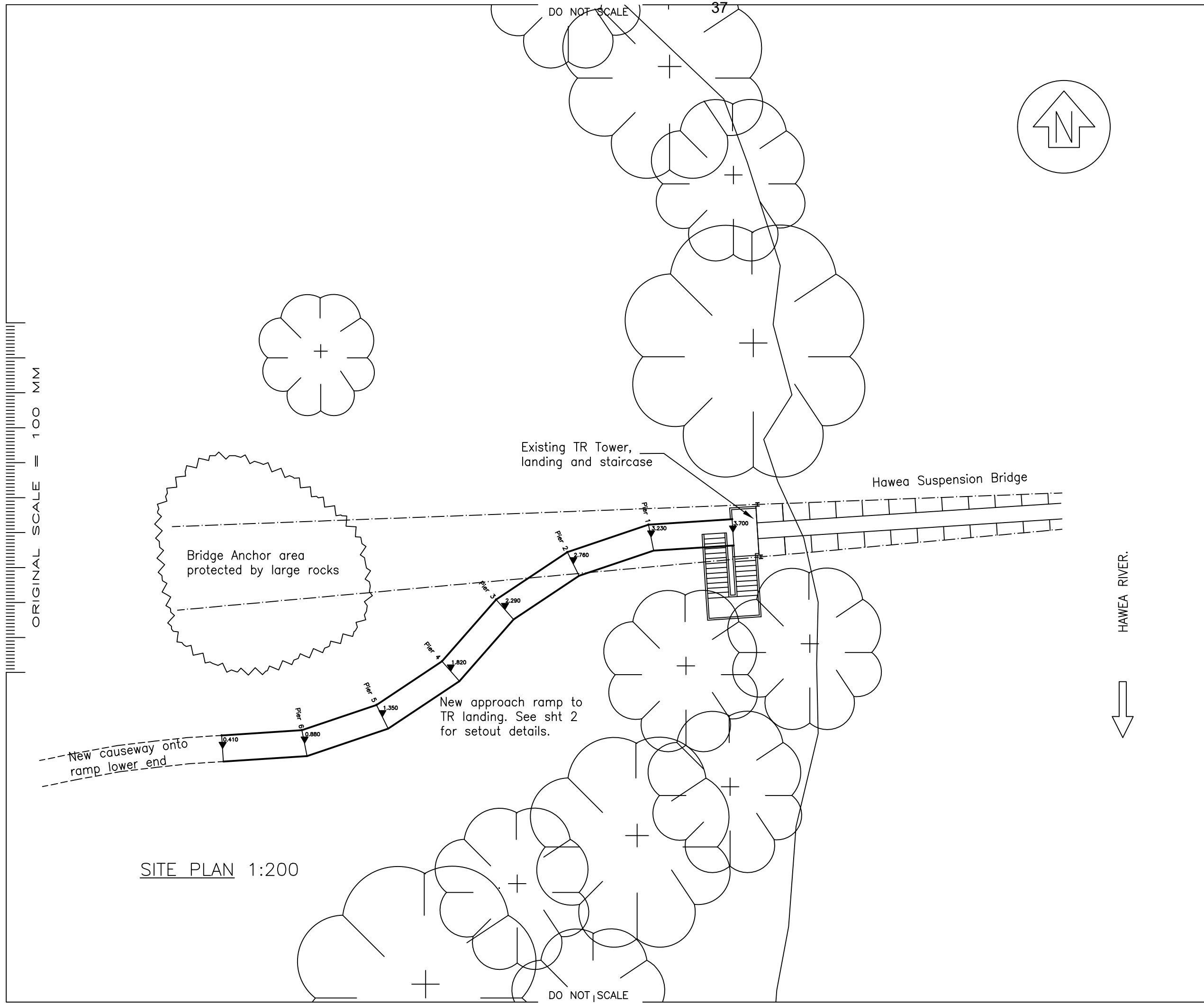


Figure 1: Proposed access ramp viewed from the west



Figure 2: View of proposed ramp from downstream



NOTES

1. All timber to be roughsawn Radiata Pine G8 Grade H3.2 treated unless noted otherwise. Supplier to confirm timber grading.

2. Multigrips and nailon plates to be grade 304 Stainless steel.

3. Bolts to be hot dip galvanised hex head bolts with 50x50x5 square washers under head and nut. Washers not required where head or nut in contact with metal bracket.


4. Liberally coat galvanised bolts, nuts and washers in contact with CCA treated timber with protective coating of heavy non-graphite grease,

5. Nails for Multigrips and Nail-on plates to be s/s 45x3.3 Flat Head Annular Groove nails or s/s 45x3.15 Flat Head Square Twist nails.

6. All Steelwork components shall be blast cleaned to SA2.5 and coated with Zinc Metal Spray to minimum thickness of 175 micron, then sealed with Thermion arc spray sealer until absorbtion is complete.

7. Countersunk Screws to be internal hexagonal drive.

A	21/06/17	CONSENT	
Iss.	Date	Reason For Issue	App.



Department of Conservation

Te Papa Atawhai

Region

SOUTHERN STH ISLAND

District

CENTRAL OTAGO

Project Name

HAWEA SUSPENSION BRIDGE RAMP

Drawing Name

SITE PLAN

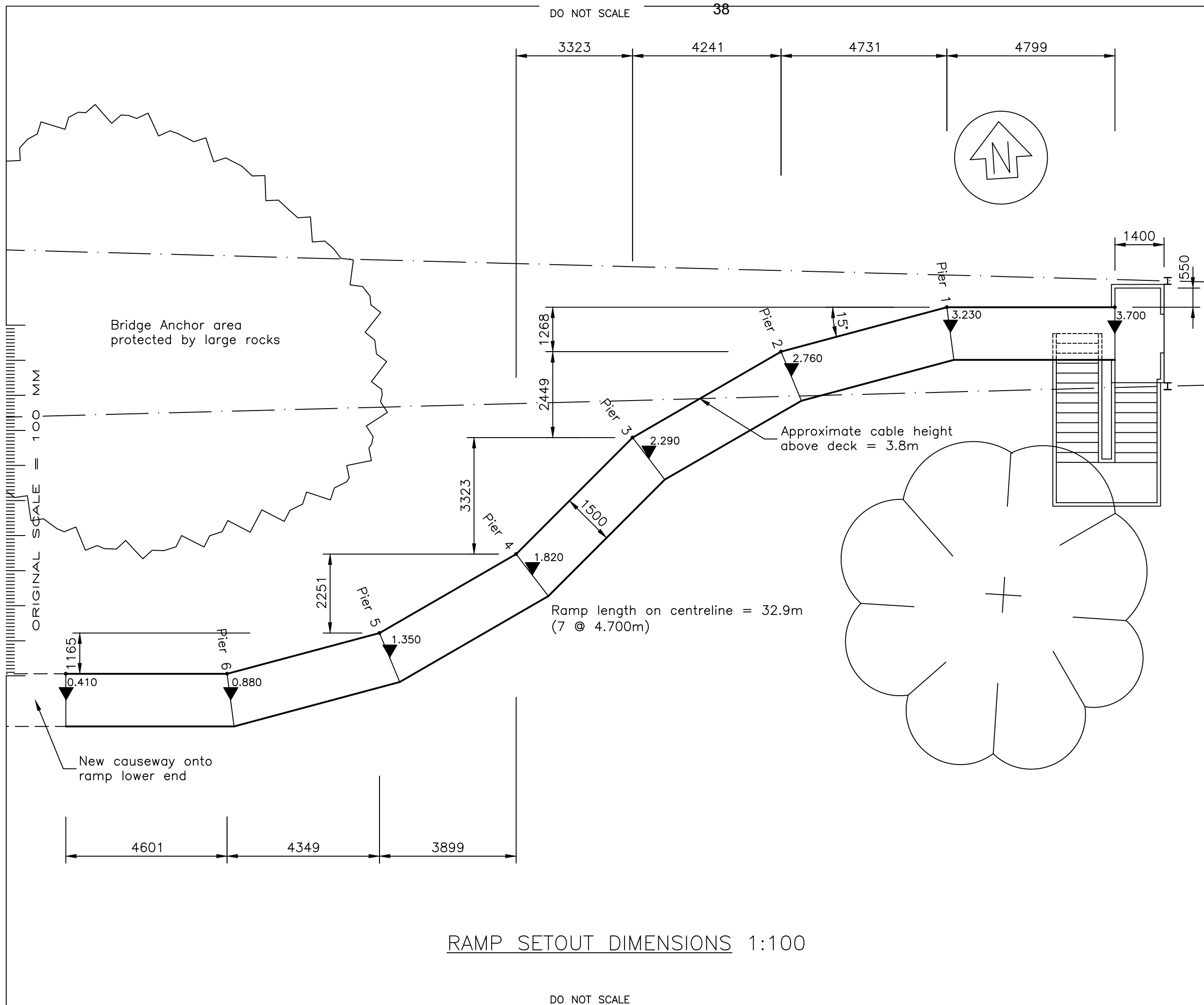
User Group

Day Visitor

cad file	scales	drawn
	AS SHOWN	TC
Map	Grid Reference	
CB12	E1299223 N5046447	
Designed	Checked	Approved
TDC		

STRUCTURE NUMBER


site no.	asset no.	drawing	issue
4091	47949	S01	A



NOTES

1. All timber to be roughsawn Radiata Pine G8 Grade H3.2 treated unless noted otherwise. Supplier to confirm timber grading.
2. Multigrips and nailon plates to be grade 304 Stainless steel.
3. Bolts to be hot dip galvanised hex head bolts with 50x50x5 square washers under head and nut. Washers not required where head or nut in contact with metal bracket.
4. Liberally coat galvanised bolts, nuts and washers in contact with CCA treated timber with protective coating of heavy non-graphite grease,
5. Nails for Multigrips and Nail-on plates to be s/s 45x3.3 Flat Head Annular Groove nails or s/s 45x3.15 Flat Head Square Twist nails.
6. All Steelwork components shall be blast cleaned to SA2.5 and coated with Zinc Metal Spray to minimum thickness of 175 micron, then sealed with Thermion arc spray sealer until absorbtion is complete.
7. Countersunk Screws to be internal hexagonal drive.

A	21/06/17	CONSENT	
Iss.	Date	Reason For Issue	App.



Department of Conservation
Te Papa Atawhai

Region
SOUTHERN STH ISLAND

District
CENTRAL OTAGO

Project Name
HAWEA SUSPENSION BRIDGE RAMP

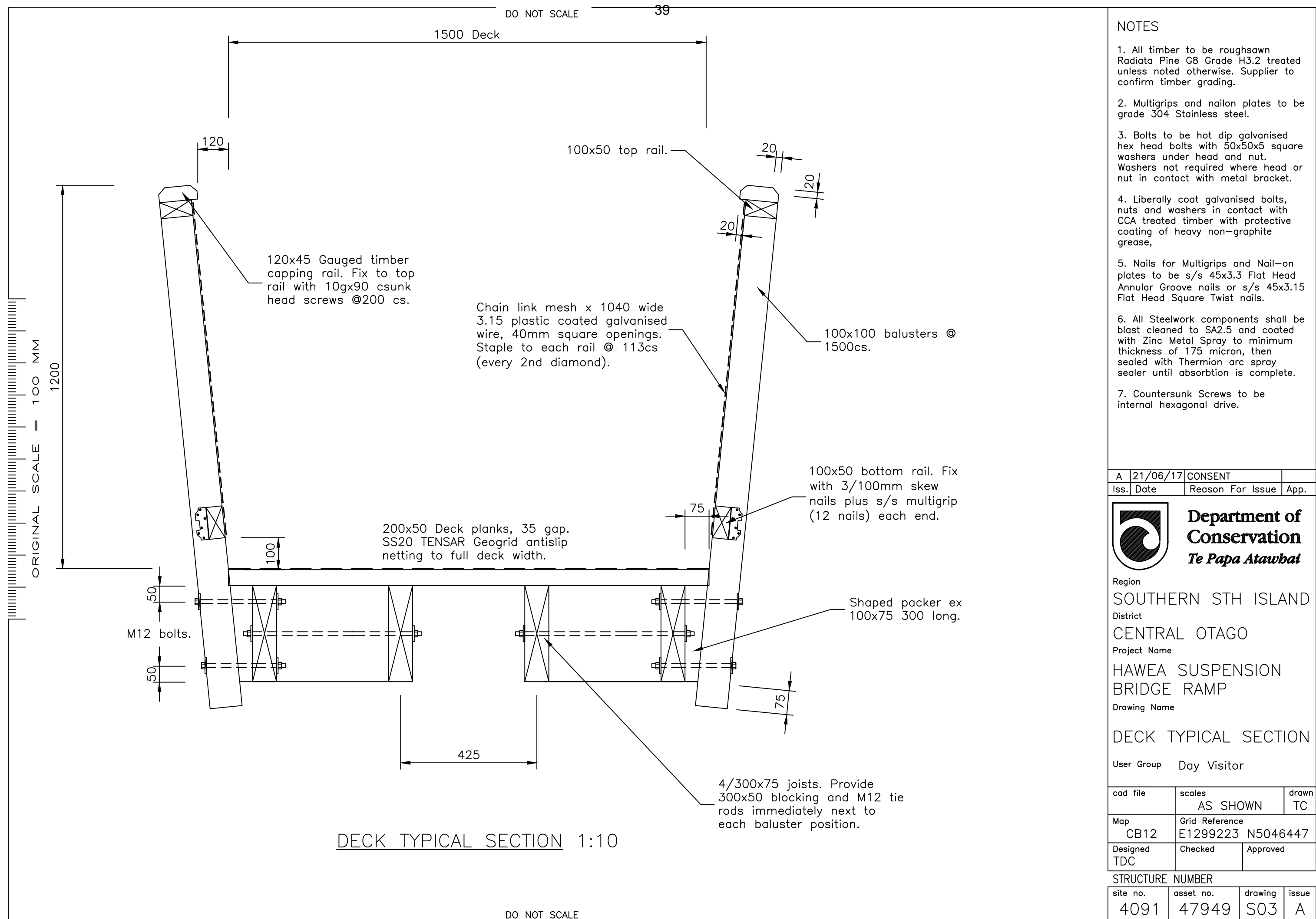
Drawing Name
RAMP SETOUT DIMENSIONS

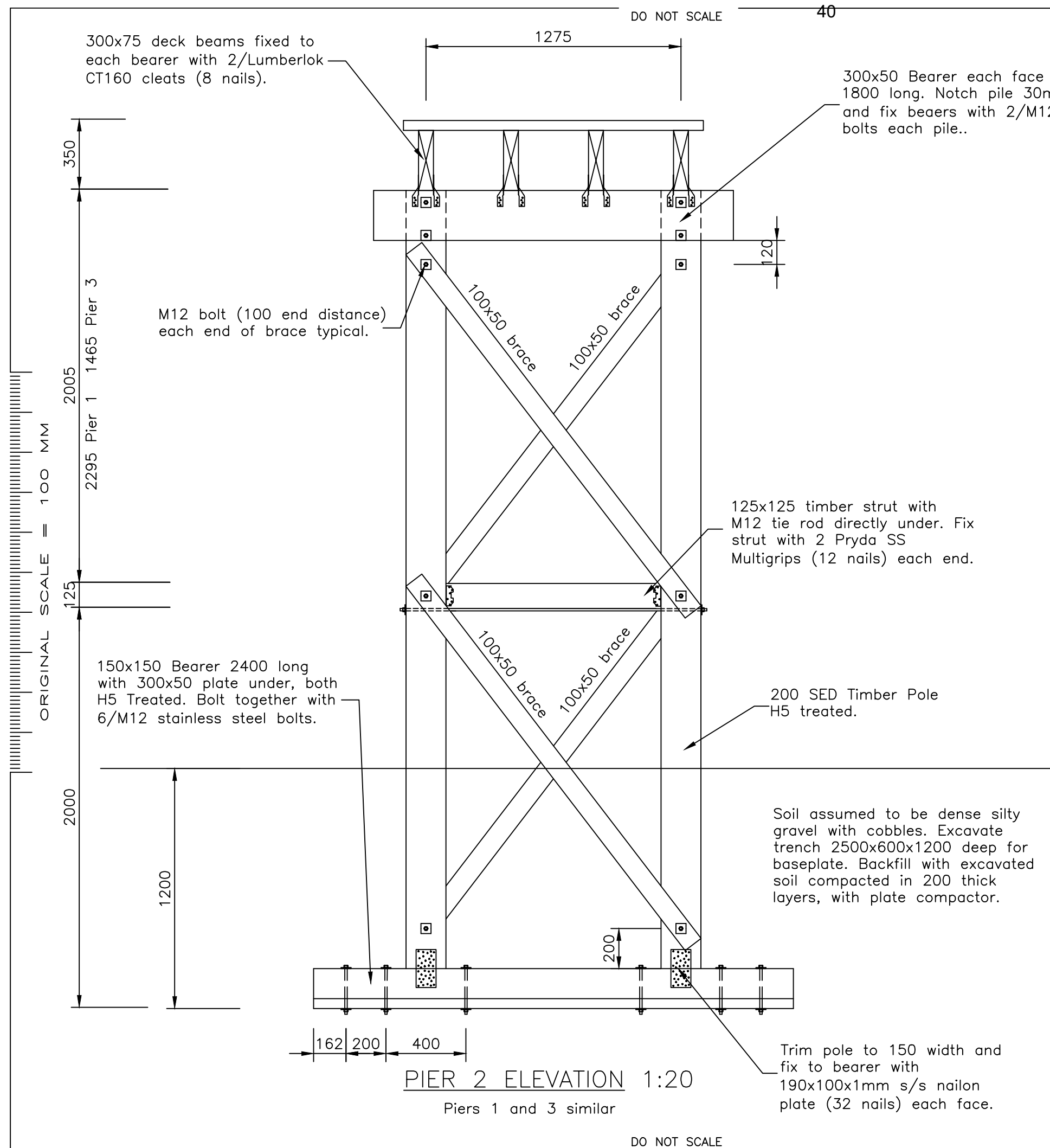
User Group Day Visitor

cad file	scales AS SHOWN	drawn TC
Map CB12	Grid Reference E1299223 N5046447	
Designed TDC	Checked	Approved

STRUCTURE NUMBER

site no. 4091	asset no. 47949	drawing S02	issue A
------------------	--------------------	----------------	------------





NOTES

1. All timber to be roughsawn Radiata Pine G8 Grade H3.2 treated unless noted otherwise. Supplier to confirm timber grading.
2. Multigrips and nailon plates to be grade 304 Stainless steel.
3. Bolts to be hot dip galvanised hex head bolts with 50x50x5 square washers under head and nut. Washers not required where head or nut in contact with metal bracket.
4. Liberally coat galvanised bolts, nuts and washers in contact with CCA treated timber with protective coating of heavy non-graphite grease,
5. Nails for Multigrips and Nail-on plates to be s/s 45x3.3 Flat Head Annular Groove nails or s/s 45x3.15 Flat Head Square Twist nails.
6. All Steelwork components shall be blast cleaned to SA2.5 and coated with Zinc Metal Spray to minimum thickness of 175 micron, then sealed with Thermion arc spray sealer until absorbtion is complete.
7. Countersunk Screws to be internal hexagonal drive.

A	21/06/17	CONSENT	
Iss.	Date	Reason For Issue	App.



Department of Conservation
Te Papa Atawhai

Region
SOUTHERN STH ISLAND
District
CENTRAL OTAGO
Project Name
HAWEA SUSPENSION
BRIDGE RAMP
Drawing Name

PIER DETAIL 1

User Group Day Visitor

cad file	scales AS SHOWN	drawn TC
Map CB12	Grid Reference E1299223 N5046447	
Designed TDC	Checked	Approved

STRUCTURE NUMBER			
site no. 4091	asset no. 47949	drawing S04	issue A

1275

300x75 deck beams fixed to each bearer with 2/Lumberlok CT160 cleats (8 nails).

300x50 Bearer each face x 1800 long. Notch pile 30mm and fix bearers with 2/M12 bolts each pile..

M12 bolt (100 end distance) each end of brace typical.

150x150 Bearer 2400 long with 300x50 plate under, both H5 Treated. Bolt together with 6/M12 stainless steel bolts.

200 SED Timber Pole H5 treated.

Soil assumed to be dense silty gravel with cobbles. Excavate trench 2500x600x900 deep for baseplate. Backfill with excavated soil compacted in 200 thick layers, with plate compactor.

Trim pole to 150 width and fix to bearer with 190x100x1mm s/s nailon plate (32 nails) each face.

PIER 4 ELEVATION 1:20

Piers 5 and 6 similar

NOTES

1. All timber to be roughsawn Radiata Pine G8 Grade H3.2 treated unless noted otherwise. Supplier to confirm timber grading.

2. Multigrips and nailon plates to be grade 304 Stainless steel.

3. Bolts to be hot dip galvanised hex head bolts with 50x50x5 square washers under head and nut. Washers not required where head or nut in contact with metal bracket.

4. Liberally coat galvanised bolts, nuts and washers in contact with CCA treated timber with protective coating of heavy non-graphite grease,

5. Nails for Multigrips and Nail-on plates to be s/s 45x3.3 Flat Head Annular Groove nails or s/s 45x3.15 Flat Head Square Twist nails.

6. All Steelwork components shall be blast cleaned to SA2.5 and coated with Zinc Metal Spray to minimum thickness of 175 micron, then sealed with Thermion arc spray sealer until absorption is complete.

7. Countersunk Screws to be internal hexagonal drive.

A	21/06/17	CONSENT	
Iss.	Date	Reason For Issue	App.



Department of Conservation
Te Papa Atawhai

Region

SOUTHERN STH ISLAND

District

CENTRAL OTAGO

Project Name

HAWEA SUSPENSION
BRIDGE RAMP

Drawing Name

PIER DETAIL 2

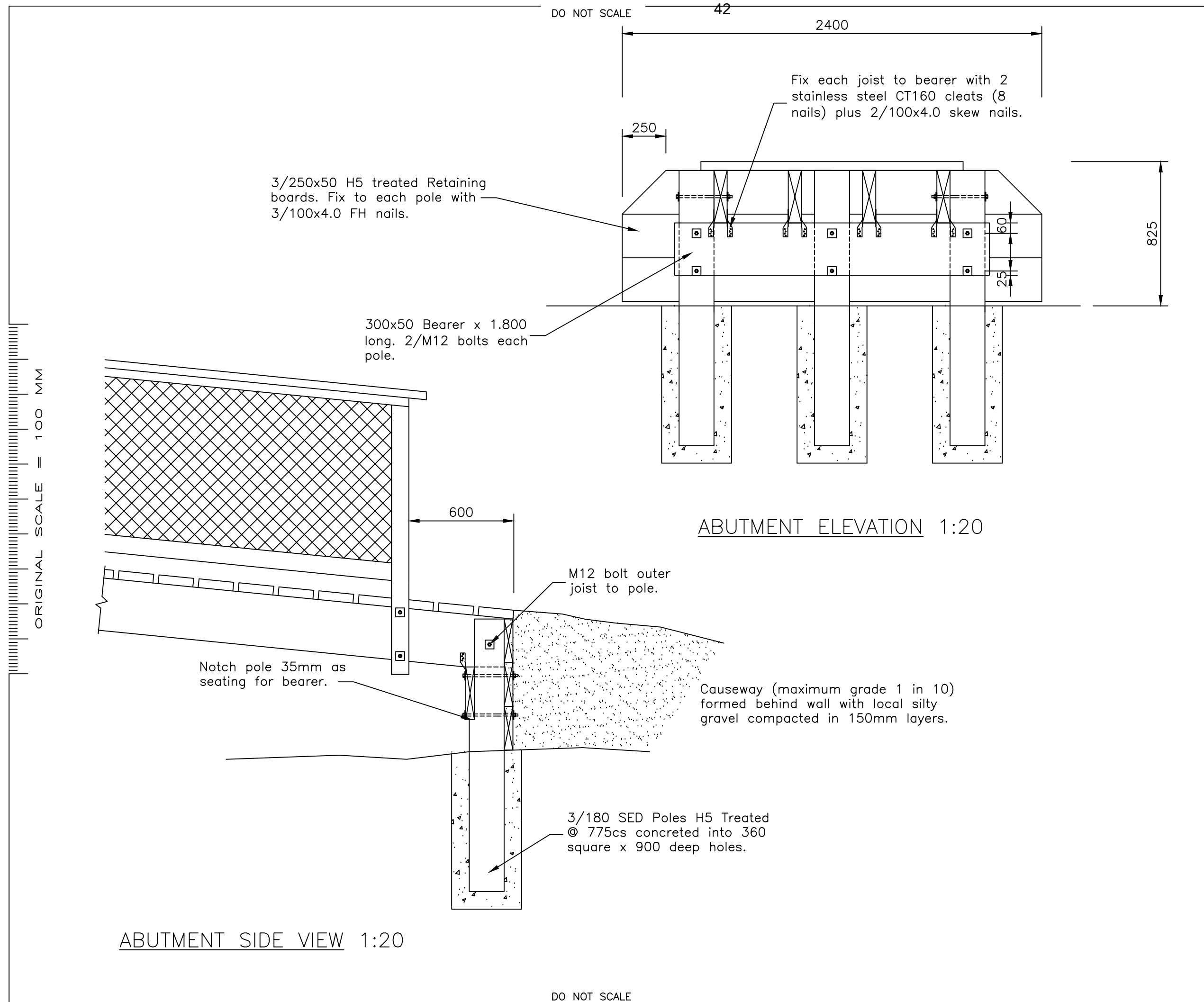
User Group Day Visitor

cad file	scales AS SHOWN	drawn TC
Map CB12	Grid Reference E1299223 N5046447	
Designed TDC	Checked	Approved

STRUCTURE NUMBER

site no.	asset no.	drawing	issue
4091	47949	S05	A

ORIGINAL SCALE = 100 MM



- NOTES
1. All timber to be roughsawn Radiata Pine G8 Grade H3.2 treated unless noted otherwise. Supplier to confirm timber grading.
 2. Multigrips and nailon plates to be grade 304 Stainless steel.
 3. Bolts to be hot dip galvanised hex head bolts with 50x50x5 square washers under head and nut. Washers not required where head or nut in contact with metal bracket.
 4. Liberally coat galvanised bolts, nuts and washers in contact with CCA treated timber with protective coating of heavy non-graphite grease,
 5. Nails for Multigrips and Nail-on plates to be s/s 45x3.3 Flat Head Annular Groove nails or s/s 45x3.15 Flat Head Square Twist nails.
 6. All Steelwork components shall be blast cleaned to SA2.5 and coated with Zinc Metal Spray to minimum thickness of 175 micron, then sealed with Thermion arc spray sealer until absorbtion is complete.
 7. Countersunk Screws to be internal hexagonal drive.

A	21/06/17	CONSENT	
Iss.	Date	Reason For Issue	App.



Region
SOUTHERN STH ISLAND

District
CENTRAL OTAGO

Project Name
HAWEA SUSPENSION
BRIDGE RAMP

Drawing Name
ABUTMENT DETAIL

User Group Day Visitor

cad file	scales AS SHOWN	drawn TC
----------	--------------------	-------------

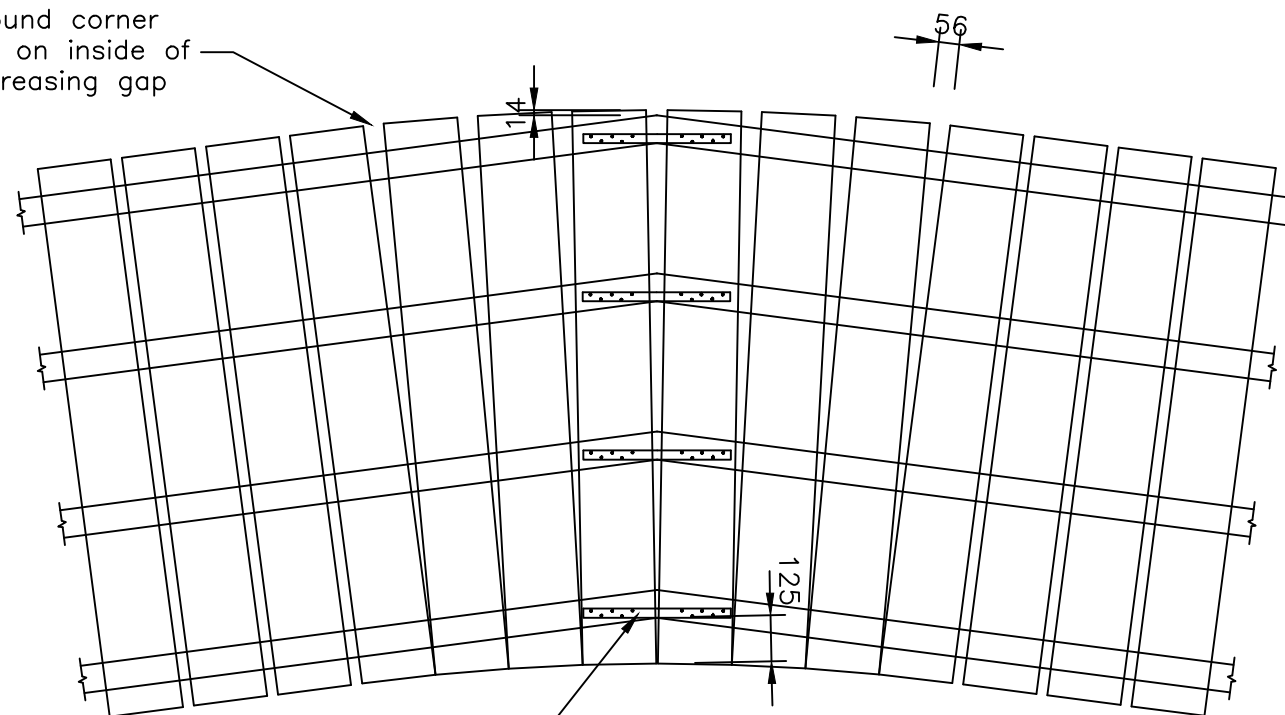
Map CB12	Grid Reference E1299223 N5046447
-------------	-------------------------------------

Designed TDC	Checked	Approved
-----------------	---------	----------

STRUCTURE NUMBER

site no. 4091	asset no. 47949	drawing S06	issue A
------------------	--------------------	----------------	------------

Fan planks around corner by closing gap on inside of corner and increasing gap on outside.



Tie joists together with stainless steel 25x1.0mm strap 400 long (10 nails) on top edge.

DECK CORNER DETAIL 1:20

Replace existing edge trimmer with new 250x50 edge beam. Fix to joists with 126x47 stainless steel joist hangers (24 nails per hanger).

Edge of existing landing

Existing landing – 140x45 decking on 140x45 joists at 400cs.

New 1500 wide ramp 200x50 decking on 4no 300x75 joists.

Fix each 300x75 joist with stainless steel nailon angle plate ex 190x100x1mm plate (24 nails) each face, plus 3 10mm x 160 washer head SPAX screws through edge trimmer.

Replace existing bearers with new 2/200x50 bearer (cut off 3 existing posts to suit) Fix bearer to posts with 190x100x1mm stainless steel nailon plate (36 nails) each face. Fix each joist to bearer with 2 stainless steel CT160 cleats (8 nails).

Existing 100x100 posts @ 1250cs.

FIXING DETAIL TO EXISTING LANDING 1:10

DO NOT SCALE

NOTES

1. All timber to be roughsawn Radiata Pine G8 Grade H3.2 treated unless noted otherwise. Supplier to confirm timber grading.
2. Multigrips and nailon plates to be grade 304 Stainless steel.
3. Bolts to be hot dip galvanised hex head bolts with 50x50x5 square washers under head and nut. Washers not required where head or nut in contact with metal bracket.
4. Liberally coat galvanised bolts, nuts and washers in contact with CCA treated timber with protective coating of heavy non-graphite grease,
5. Nails for Multigrips and Nail-on plates to be s/s 45x3.3 Flat Head Annular Groove nails or s/s 45x3.15 Flat Head Square Twist nails.
6. All Steelwork components shall be blast cleaned to SA2.5 and coated with Zinc Metal Spray to minimum thickness of 175 micron, then sealed with Thermion arc spray sealer until absorption is complete.
7. Countersunk Screws to be internal hexagonal drive.

A	21/06/17	CONSENT	
Iss.	Date	Reason For Issue	App.



Department of Conservation
Te Papa Atawhai

Region

SOUTHERN STH ISLAND

District

CENTRAL OTAGO

Project Name

HAWEA SUSPENSION
BRIDGE RAMP

Drawing Name

DETAILS

User Group Day Visitor

cad file	scales AS SHOWN	drawn TC
Map CB12	Grid Reference E1299223 N5046447	
Designed TDC	Checked	Approved

STRUCTURE NUMBER

site no. 4091	asset no. 47949	drawing S07	issue A
------------------	--------------------	----------------	------------

INFRASTRUCTURE TEAM SUMMARY REPORT
SUMMARY OVERVIEW REPORT

REPORT ISSUED ON : 1st August 2018

Bundle #	Project #	Project Name				PRACTICAL COMPLETION DATE	Expected to Realised benefits from BBC	OVERALL PROJECT STATUS	COMMENT
			RISK PROFILE*	H&S STATUS FOR PERIOD	FINANCIAL STATUS				
			Very Low						
			Low						
			Moderate	No Incidents	On Budget		Fully Realised	On Track	
			High	Near Miss	At Risk		Partially Realised	At Risk	
			Very High	Reportable	Over Budget		Not Realised	Overdue	
108	108	Luggate wastewater pumping system	Moderate	No Incidents	On Budget	2/08/2019			RP: Planning and Building Consents yet to be uplifted together with NZTA service agreement and HoA (Heads of Agreement) for easement
109	109	Luggate Reticulation Extension	Very Low	No Incidents	On Budget	26/06/2020			
111	111	Luggate WTP & Bore pump station, Supply mains & reservoir	High	No Incidents	On Budget	15/09/2020			
116	116	Hawea Water Supply Upgrades - Treatment (Former project of Bundle 3)	Very Low	No Incidents	On Budget	26/06/2020			
117	117	Hawea Water Supply Upgrades - Caples Avenue Duplicate Water Main (Former project of Bundle 3)	Very Low	No Incidents	On Budget	26/06/2020			
1		1 TREATED WATER RESERVOIRS DESIGN	Very Low	No Incidents	On Budget	16/08/2019			
1	1.1	BEACON POINT RESERVOIR	Very Low	No Incidents	On Budget	16/08/2019			
2		2 TREATED WATER RESERVOIRS CONSTRUCT	Very Low	No Incidents	On Budget	9/11/2020			
2	2.1	BEACON POINT RESERVOIR	Very Low	No Incidents	On Budget	9/11/2020			
3		3 WASTEWATER PUMP STATION AND PIPELINES DESIGN	Very Low	No Incidents	On Budget	13/04/2020			
3	3.1	HAWEA PUMPING SYSTEM & PIPELINE	Very Low	No Incidents	On Budget	13/04/2020			
3	3.2	NEW RATA STREET WWPS	Very Low	No Incidents	On Budget	16/08/2019			
3	3.3	RECREATION GROUND PUMP STATION STAGE 1	Very Low	No Incidents	On Budget	31/05/2019			
4		4 WASTEWATER PUMP STATION AND PIPELINES CONSTRUCT	Very Low	No Incidents	On Budget	18/12/2020			
4	4.1	HAWEA PUMPING SYSTEM & PIPELINE	Very Low	No Incidents	On Budget	18/12/2020			
4	4.2	NEW RATA STREET WWPS	Very Low	No Incidents	On Budget	18/12/2020			
4	4.3	RECREATION GROUND PUMP STATION STAGE 1	Very Low	No Incidents	On Budget	18/12/2020			
5		5 WANAKA TRANSMISSION PIPELINE DESIGN	Very Low	No Incidents	On Budget	3/05/2019			
5	5.1	SECTION 1: Macpherson and Golfcourse Rd	Very Low	No Incidents	On Budget	3/05/2019			
5	5.2	SECTION 2: SECTION 2: Cardrona Valley Rd & Studholme Rd Section	Very Low	No Incidents	On Budget	3/05/2019			
6		6 WANAKA TRANSMISSION PIPELINE CONSTRUCT	Very Low	No Incidents	On Budget	16/10/2020			
6	6.1	SECTION 1: Macpherson and Golfcourse Rd	Very Low	No Incidents	On Budget	16/10/2020			
6	6.2	SECTION 2: SECTION 2: Cardrona Valley Rd & Studholme Rd Section	Very Low	No Incidents	On Budget	16/10/2020			
7		7 WATER TREATMENT PLANTS DESIGN AND BUILD	Very Low	No Incidents	On Budget	23/11/2021			
7	7.1	BEACON POINT WTP	Very Low	No Incidents	On Budget	15/12/2020			
7	7.2	NEW TWO MILE WTP	Very Low	No Incidents	On Budget	23/11/2021			

- Strategic Business Case / Programme Business Case
- Indicative Business Case
- Detailed Business Case
- Implementation Phase
- Project Close Out

INFRASTRUCTURE TEAM SUMMARY REPORT

SUMMARY OVERVIEW REPORT

REPORT ISSUED ON : 1st August 2018

INFRASTRUCTURE TEAM SUMMARY REPORT								Strategic Business Case / Programme Business Case	
SUMMARY OVERVIEW REPORT								Indicative Business Case	
REPORT ISSUED ON : 1st August 2018								Detailed Business Case	
								Implementation Phase	
								Project Close Out	
Bundle #	Project #	Project Name	RISK PROFILE*	H&S STATUS FOR PERIOD	FINANCIAL STATUS	PRACTICAL COMPLETION DATE	Expected to Realised benefits from BBC	OVERALL PROJECT STATUS	COMMENT
10	10 WANAKA STORMWATER WORKS PANEL DELIVERY DESIGN		Very Low	No Incidents	On Budget	18/10/2019		<div></div>	
10	10.1 Bremner Park Rd/Beacon Point Rd		Very Low	No Incidents	On Budget	18/10/2019		<div></div>	
10	10.2 Wiley Rd/Beamont/Beacon Pt WNK04A		Very Low	No Incidents	On Budget	18/10/2019		<div></div>	
10	10.3 Mt Aspiring College WNK04B		Very Low	No Incidents	On Budget	18/10/2019		<div></div>	
10	10.4 Bills Way WNK 19		Very Low	No Incidents	On Budget	18/10/2019		<div></div>	
10	10.5 Aubrey Rd WNK_03		Very Low	No Incidents	On Budget	18/10/2019		<div></div>	
10	10.8 Three Parks Stormwater Outlet (Wanaka)		Very Low	No Incidents	On Budget	18/10/2019		<div></div>	
11	11 WANAKA STORMWATER WORKS PANEL DELIVERY CONSTRUCT		Very Low	No Incidents	On Budget	5/03/2021		<div></div>	
11	11.1 Bremner Park Rd/Beacon Point Rd		Very Low	No Incidents	On Budget	7/08/2020		<div></div>	
11	11.2 Wiley Rd/Beamont/Beacon Pt WNK04A		Very Low	No Incidents	On Budget	18/09/2020		<div></div>	
11	11.3 Mt Aspiring College WNK04B		Very Low	No Incidents	On Budget	30/10/2020		<div></div>	
11	11.4 Bills Way WNK 19		Very Low	No Incidents	On Budget	11/12/2020		<div></div>	
11	11.5 Aubrey Rd WNK_03		Very Low	No Incidents	On Budget	22/01/2021		<div></div>	
11	11.8 Three Parks Stormwater Outlet (Wanaka)		Very Low	No Incidents	On Budget	5/03/2021		<div></div>	

- Strategic Business Case / Programme Business Case
- Indicative Business Case
- Detailed Business Case
- Implementation Phase
- Project Close Out

NZTA subsidised projects

Project Name	Road	Status	Estimated Cost
Bernard Rd footpath	BERNARD ROAD	In Construction	\$100k-\$200k
Aubrey Road Cycle Lane	AUBREY ROAD	In Construction	\$50k-\$100k
Hidden Hills Drive Safety Investigation	HIDDEN HILLS DRIVE	Not started	\$10k-\$50k
Aubrey Road Cycle Path Seal Investigation and design	AUBREY ROAD	Not started	\$10k-\$50k
Anderson Rd Corridor Upgrades	ANDERSON ROAD	Designed	\$50k-\$100k
Cardrona Valley Rd Safety Investigation	Cardrona Valley Rd	Not started	\$10k-\$50k
Kane Road Seal Widening Stage 2	KANE ROAD	Designed	\$100k-\$200k
Tourist Driver Project	ARDMORE STREET	Not started	\$5k - \$10k
Holy Family Kea Crossing	AUBREY ROAD	Not started	\$5k - \$10k
Capell Ave - Bodkin to toilets footpath	CAPELL AVENUE	Not started	\$5k - \$10k
Stone St flag light	CARDRONA VALLEY ROAD	Not started	\$1k - \$5k
Footpath upgrade around Wanaka medical centre	GOLF COURSE ROAD	Not started	\$10k-\$50k
Moraine footpath connection	MORAINE PLACE	Not started	\$10k-\$50k
Tidy up of entrance to Capell Av Shopping Area	CAPELL AVENUE	Designed	\$50k-\$100k
Slippery gravel surface sign Gladston Rd	GLADSTONE ROAD	Not started	<\$1k
Construct new AC Footpath Anderson Rd to Raglan	WILKIN ROAD	Not started	\$50k-\$100k
Capell Av Road edge tidy up –at toilets/tennis courts	CAPELL AV	Not started	\$10k-\$50k
Nook Rd and Hawea Back Rd intersection Safety Investigation	NOOK ROAD	Not started	\$10k-\$50k
Alison Ave/Gunn Rd roundabout Safety Investigation	GUNN ROAD	Not started	\$10k-\$50k
Safety barrier on approach to bridge	MOTATAPU ROAD	Not started	\$10k-\$50k
Lakeview Terrace - Slow sign	LAKEVIEW TERRACE	Not started	<\$1k
Ruby Island Rd - Signage 200m to Ruby Island Rd	RUBY ISLAND ROAD	Not started	<\$1k
Ardmore Street Loading Zone	ARDMORE STREET	Not started	<\$1k
Dungarvon Street Pedestrian Crossing	DUNGARVON STREET	Not started	\$10k-\$50k
Elderly crossing signage outside Aspiring Lifestyle Village	GOLF COURSE ROAD	Not started	<\$1k

Wanaka Parks & Reserves Capital Programme + Renewals <i>Monthly WCB Update -- August 2018</i>			
Project	Details/Description	Projected start date	Projected completion date
Aspiring Rd - replace permaloo with exeloo *	Toilet to be installed with in conjunction new car park. Design has been amended to include cycle hub. Project went to tender last week.		1/12/2018
Allenby Park new path	Work commenced, play equipment installed. Final clean up to be completed 10/08.	1/03/2018	20/08/2018
Minor Renewal Reserve Works - Wanaka Ward	See details below		1/06/2018
Playground Renewals	Playgrounds to be audited August/ September renewal programme set to commence September.	1/08/2018	1/06/2019
Street Tree Replacement program - 2-3 streets a year Wanaka	Programme underway.	1/08/2018	1/07/2019
Walkways	New temporary walkway agreed with developer at Alpine Estate development.		
Minor Renewal Reserve Works - Wanaka Ward			
Wanaka Fencing and Entrances			
Scotts Beach Lake Hawea 2 sections post and rail fence to be completed in spring		19/02/2018	1/11/2018
Wanaka Park garden enhancements/plants			
Dinosaur slide mural in conjunction with UC Arts Council. Work has commenced, but due to weather conditions unsuitable for painting over winter this project will be completed in spring.		1/04/2018	1/12/2018
Wanaka furniture			
Wanaka Park improvements (Skate bowls, sports facilities, turf			
Geotechnical assessment of Wanaka Skate Park to be undertaken prior to repair work			
Wanaka Roding Parks and Reserves Maintenance			