

Scuttlebutt

THE QUEENSTOWN LAKES DISTRICT COUNCIL NEWSLETTER // **AUGUST 2015** // **ISSUE 110**

Special Report: The District Plan

We're talking growth, housing, enabling property owners, facilitating good development and protecting what's important.

Continued on page 2

INSIDE

10

REMOTE METER
READINGS SAVE
TIME

12

PARKING
CHANGES IN
FRANKTON

14

WATER
WEED

18

PARTY AT
THE PARK



A word in your ear

Right now we're consulting on stage 1 of the proposed District Plan. 'District' is the word I'd like to highlight here because this plan is about all of us, together.

Together we're facing the many challenges that this plan is looking to address:

- increasing residential and visitor projections,
- pressure on transport and roading networks,
- demands on services including good quality, affordable housing,
- increasing awareness of the impact of natural hazards.

We've been working hard to get the balance right – people want to live and visit here for good reasons – it's the same reasons that keep us all here. We need to find ways to build more houses but we need to be clever about where they go. And needless to say, there's a lot of things that are very special about where we live that need to be protected. Like I say, it's a balancing act.

But it's not all about housing and where it will go. There are lots of other areas that the District Plan covers, like protecting outstanding natural landscapes, heritage features, trees, indigenous vegetation and more.

If you own property here, you are about to receive a notification pack summarising the key changes being proposed in the plan. What you're reading here sets a wider scene for the strategic direction we plan to take to manage growth, land use and development in our district over the next ten years.

Love or hate the proposals, we need to work together on this, not against each other. Please don't keep your views to yourself. Tell us about the things we've got right as well as the things you don't agree with. Let us know your great ideas for how to make it all fit together. And do it with future of the whole district in mind. You'll find all the details about how to have a say later in the document.

VANESSA VAN UDEN, MAYOR

How did we get here?

Every Council in New Zealand is required to review their District Plan every ten years. We formalised the full review of the District Plan back in 2014, building on more than two years of community consultation and monitoring.

Many of the chapters contained in Stage 1 have also already been subject to informal consultation. We listened to what the community had to say and made changes where appropriate.

The result, we think, is a plan which is easier to use and reduces the number of rules and limits on your freedom to develop your property (provided standards are met).

STAGE 2 will kick off late 2016. Chapters to be reviewed include Townships, Industrial and Transport.

The Big Picture – our strategic direction

The Strategic Direction Chapter of the Proposed District Plan is our vision for the future. We've published this chapter in full because if you

read one thing about the Proposed District Plan, we think this should be it. It provides a good snapshot of how we propose to manage growth,

land use and development in a smart way, protecting the things that make this district special.

“ *If you're not likely to delve into the weighty document that will be the first stage of the District plan review, but are keen to understand what's going on, the Strategic Directions chapter is for you. This chapter captures the 10 year vision for our community and sets the scene for all the other chapters - like a high level executive summary. There is enough information in this chapter for you to get a feel for where we are going and to provide comment accordingly. We look forward to hearing your thoughts.”*

ALEXA FORBES, WAKATIPU WARD COUNCILLOR



The Strategic Direction Chapter

Purpose

This chapter sets out the overarching strategic direction for the management of growth, land use and development in a manner that ensures sustainable management of the Queenstown Lakes District's special qualities:

- Dramatic alpine landscapes free of inappropriate development
- Clean air and pristine water
- Vibrant and compact town centres
- Compact and connected settlements that encourage public transport, biking and walking
- Diverse, resilient, inclusive and connected communities
- A district providing a variety of lifestyle choices
- An innovative and diversifying economy based around a strong visitor industry
- A unique and distinctive heritage
- Distinctive Ngai Tahu values, rights and interests

This direction is provided through a set of Strategic Goals, Objectives and Policies which provide the direction for the more detailed provisions related to zones and specific topics contained elsewhere in the District Plan.

Strategic Direction Goals, Objectives and Policies

GOAL 1 - Develop a prosperous, resilient and equitable economy.

OBJECTIVE - Recognise, develop and sustain the Queenstown and Wanaka central business areas as the hubs of New Zealand's premier alpine resorts and the District's economy.

Policies

- Provide a planning framework for the Queenstown and Wanaka central business areas that enables quality development and enhancement of the centres as the key commercial hubs of the District, building on their existing functions and strengths.
- Avoid commercial rezoning that could fundamentally undermine the role of the Queenstown and Wanaka central business areas as the primary focus for the District's economic activity.
- Promote growth in the visitor industry and encourage investment in lifting the scope and quality of attractions, facilities and services within the Queenstown and Wanaka central business areas.

OBJECTIVE - Recognise, develop and sustain the key local service and employment functions served by commercial centres and industrial areas outside of the Queenstown and Wanaka central business areas in the District.

Policies

- Avoid commercial rezoning that would fundamentally undermine the key local service and employment function role that the larger urban centres outside of the Queenstown and Wanaka central business areas fulfil.
- Reinforce and support the role that township commercial precincts and local shopping centres fulfil in serving local needs.
- Avoid non-industrial activities occurring within areas zoned for Industrial activities.

OBJECTIVE - Enable the development of innovative and sustainable enterprises that contribute to diversification of the District's economic base and create employment opportunities.

Policies

- Provide for a wide variety of activities and sufficient capacity within commercially zoned land to accommodate business growth and diversification.
- Encourage economic activity to adapt to and recognise opportunities and risks associated with climate change and energy and fuel pressures.

OBJECTIVE - Recognise the potential for rural areas to diversify their land use beyond the strong productive value of farming, provided a sensitive approach is taken to rural amenity, landscape character, healthy ecosystems, and Ngai Tahu values, rights and interests.

OBJECTIVE - Maintain and promote the efficient operation of the District's infrastructure, including designated Airports, key roading and communication technology networks.

GOAL 2 - The strategic and integrated management of urban growth

OBJECTIVE - Ensure urban development occurs in a logical manner:

- to promote a compact, well designed and integrated urban form;
- to manage the cost of Council infrastructure; and
- to protect the District's rural landscapes from sporadic and sprawling development.

Policies

- Apply Urban Growth Boundaries (UGBs) around the urban areas in the Wakatipu Basin (including Jack's Point), Arrowtown and Wanaka.
- Apply provisions that enable urban development within the UGBs and avoid urban development outside of the UGBs.
- Manage the form of urban development within the UGBs ensuring:
 - o Connectivity and integration with existing urban development;
 - o Sustainable provision of Council infrastructure; and
 - o Facilitation of an efficient transport network, with particular regard to integration with public and active transport systems
- Encourage a higher density of residential development in locations close to town centres, local shopping zones, activity centres, public transport routes and non-vehicular trails.

- Ensure UGBs contain sufficient suitably zoned land to provide for future growth and a diversity of housing choice.
- Ensure that zoning enables effective market competition through distribution of potential housing supply across a large number and range of ownerships, to reduce the incentive for land banking in order to address housing supply and affordability.
- That further urban development of the District's small rural settlements be located within and immediately adjoining those settlements.

OBJECTIVE - Manage development in areas affected by natural hazards.

Policies

- Ensure a balanced approach between enabling higher density development within the District's scarce urban land resource and addressing the risks posed by natural hazards to life and property.

GOAL 3 - A quality built environment taking into account the character of individual communities

OBJECTIVE - Achieve a built environment that ensures our urban areas are desirable and safe places to live, work and play.

Policies

- Ensure development responds to the character of its site, the street, open space and surrounding area, whilst acknowledging the

necessity of increased densities and some change in character in certain locations.

- That larger scale development is comprehensively designed with an integrated and sustainable approach to infrastructure, buildings, street, trail and open space design.
- Promote energy and water efficiency opportunities, waste reduction and sustainable building and subdivision design.

OBJECTIVE - Protect the District's cultural heritage values and ensure development is sympathetic to them.

Policies

- Identify heritage items and ensure they are protected from inappropriate development.

GOAL 4 - The protection of our natural environment and ecosystems

OBJECTIVE - Promote development and activities that sustain or enhance the life-supporting capacity of air, water, soil and ecosystems.

OBJECTIVE - Protect areas with significant Nature Conservation Values.

Policies

- Identify areas of significant indigenous vegetation and significant habitats of indigenous fauna, referred to as Significant Natural Areas on the District Plan maps and ensure their protection.

“ This is our future. The District Plan is a rare opportunity for the unique communities of Queenstown Lakes to pull together and create the master plan for our District. The opportunity is strategic - to think, discuss and create actions that will restore and enhance our natural and social environments for the long-term future.”

ELLA LAWTON, WANAKA WARD COUNCILLOR



- Where adverse effects on nature conservation values cannot be avoided, remedied or mitigated, consider environmental compensation as an alternative.

OBJECTIVE - Maintain or enhance the survival chances of rare, endangered, or vulnerable species of indigenous plant or animal communities.

Policies

- That development does not adversely affect the survival chances of rare, endangered, or vulnerable species of indigenous plant or animal communities.

OBJECTIVE - Avoid exotic vegetation with the potential to spread and naturalise.

Policies

- That the planting of exotic vegetation with the potential to spread and naturalise is banned.

OBJECTIVE - Preserve or enhance the natural character of the beds and margins of the District's lakes, rivers and wetlands.

Policies

- That subdivision and / or development which may have adverse effects on the natural character and nature conservation values of the District's lakes, rivers, wetlands and their beds and margins be carefully managed so that life-supporting capacity and natural character is maintained or enhanced.

OBJECTIVE - Maintain or enhance the water quality and function of our lakes, rivers and wetlands.

Policies

- That subdivision and / or development be designed so as to avoid adverse effects on the water quality of lakes, rivers and wetlands in the District.

OBJECTIVE - Facilitate public access to the natural environment.

Policies

- Opportunities to provide public access to the natural environment are sought at the time of plan change, subdivision or development.

OBJECTIVE - Respond positively to Climate Change.

Policies

- Concentrate development within existing urban areas, promoting higher density development that is more energy efficient and supports public transport, to limit increases in greenhouse gas emissions in the District.

GOAL 5 - Our distinctive landscapes are protected from inappropriate development

OBJECTIVE - Protect the natural character of Outstanding Natural Landscapes and Outstanding Natural Features from subdivision, use and development.

Policies

- Identify the district's Outstanding Natural Landscapes and Outstanding Natural Features on the District Plan maps, and protect

them from the adverse effects of subdivision and development.

OBJECTIVE - Minimise the adverse landscape effects of subdivision, use or development in specified Rural Landscapes.

Policies

- Identify the district's Rural Landscape Classification on the district plan maps, and minimise the effects of subdivision, use and development on these landscapes.

OBJECTIVE - Direct new subdivision, use or development to occur in those areas which have potential to absorb change without detracting from landscape and visual amenity values.

Policies

- Direct urban development to be within Urban Growth Boundaries (UGB's) where these apply, or within the existing rural townships.

OBJECTIVE - Recognise there is a finite capacity for residential activity in rural areas if the qualities of our landscape are to be maintained.

Policies

- Give careful consideration to cumulative effects in terms of character and environmental impact when considering residential activity in rural areas.
- Provide for rural living opportunities in appropriate locations.

OBJECTIVE - Recognise that agricultural land use is fundamental to the character of our landscapes.



If you want to get there fast - go alone. If you want to get there strong - go together! This is what I would like to see from the District Plan review. ALL of the community getting behind a District Plan that we can work for together - for a strong and positive result - a strong and positive future!"

CALUM MACLEOD, WANAKA WARD COUNCILLOR



Policies

- Give preference to farming activity in rural areas except where it conflicts with significant nature conservation values.
- Recognise that the retention of the character of rural areas is often dependent on the ongoing viability of farming and that evolving forms of agricultural land use which may change the landscape are anticipated.

GOAL 6 - Enable a safe and healthy community that is strong, diverse and inclusive for all people

OBJECTIVE - Provide access to housing that is more affordable.

Policies

- Provide opportunities for low and moderate income Households to live in the District in a range of accommodation appropriate for their needs.
- In applying plan provisions, have regard to the extent to which minimum site size, density, height, building coverage and other controls influence Residential Activity affordability.

OBJECTIVE - Ensure a mix of housing opportunities.

Policies

- Promote mixed densities of housing in new and existing urban communities.
- Enable high density housing adjacent or close to the larger commercial centres in the District.
- Explore and encourage innovative approaches to design to provide access to affordable housing.

OBJECTIVE - Provide a high quality network of open spaces and community facilities.

Policies

- Ensure that open spaces and community facilities are accessible for all people.
- That open spaces and community facilities are located and designed to be desirable, safe, accessible places.

OBJECTIVE - Ensure planning and development maximises opportunities to create safe and healthy communities through subdivision and building design.

Policies

- Ensure Council-led and private design and development of public spaces and built development maximises public safety by adopting "Crime Prevention Through Environmental Design".
- Ensure Council-led and private design and development of public spaces and built development maximises the opportunity for recreational and commuting walking and cycling.

GOAL 7 - Council will act in accordance with the principles of the Treaty of Waitangi and in partnership with Ngai Tahu.

OBJECTIVE - Protect Ngai Tahu values, rights and interests, including taoka species and habitats, and wahi tupuna.

OBJECTIVE - Enable the expression of kaitiakitaka by providing for meaningful collaboration with Ngai Tahu in resource management decision making and implementation.

Change before we have to

It's our responsibility to consider and plan for the future needs of the community while protecting the state of the environment. If we don't, we'll always be on the back foot, scrambling to react to issues as they arise.

That's why this plan proposes lots of changes, including upping housing density in carefully thought out locations, ensuring

better protection of our important heritage features, helping to create vibrant town centres and much more.

If you're a ratepayer in this district, you are about to receive a fact sheet summarising the key changes to every chapter. You'll also find it online at www.qldc.govt.nz/proposed-district-plan or drop in to a Council office to pick up a copy.

“The Queenstown Lakes District has experienced significant growth and all indicators are we will not be slowing down any time soon. The District Plan is our chance to shape our future so that generations to come can continue to live here with the quality of life we expect today.”

**SCOTT STEVENS,
ARROWTOWN WARD
COUNCILLOR**



Want to get into more detail?

The QLDC website is the go-to place for everything you need to know about the Proposed District Plan. There you'll find:

- The full provisions of every revised chapter.
- Fact sheets on some of the more significant changes, including images to help explain some of the more complicated rules.
- Links to a range of supporting information written by international experts.
- Information about the notification process.
- Online Submission form.

How to get involved

Now's your opportunity to help shape the future of this district. We invite anyone and everyone to get involved. Your options for making a submission are:

- **ONLINE:** www.qldc.govt.nz/proposed-district-plan
- **POST:** Queenstown Lakes District Council, Private Bag 50072, Queenstown 9348, Attention: Proposed District Plan Submission
- **EMAIL:** services@qldc.govt.nz (subject line: Proposed District Plan Submission)

If you decide not to make a submission using our online form, please be aware that written submissions must be on Form 5 as prescribed by the Resource Management Act 1991. Your

submission must state whether or not you wish to speak to your submission at a hearing. This form is available from all Council offices and public libraries in the district.

**SUBMISSIONS CLOSE on Friday
23 October 2015.**



The District Plan sets the scene and strategy for our district's future - and community input to the draft plan will result in changes. We've shortened, simplified and cut red tape while trying to protect what makes this the place we love to live in - but we will have inevitably missed things. Please tell us what you support as well as what you object to - or else the plan might lose the things you think we got right! For instance, do you agree with limiting urban sprawl and night sky pollution, boosting town centre vibrancy, connectivity and public transport and banning the planting of wilding pine species? What about economic development and heritage? Please have a look at our draft and let us know your feedback."

CATH GILMOUR, WAKATIPU WARD COUNCILLOR



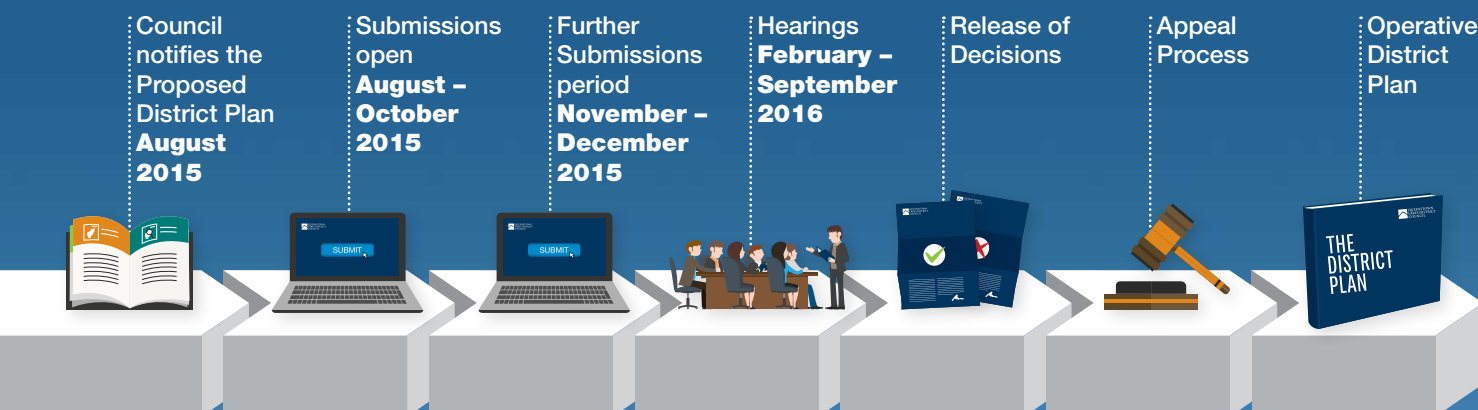
Want to talk about it?

A duty policy planner will be available every workday until submissions close. So if you'd like some help understanding the proposals, get in touch for a chat.

CALL 03 441 0499 (Queenstown) or 03 443 0024 (Wanaka) to talk on the phone or make an appointment.

What happens next?

After submissions close on 23 October, we'll prepare a summary of submissions and notify it for further submissions. There are rules in the Resource Management Act that say who can make further submissions. We'll tell you more about that at the time.



**WE
ARE
HERE**



DID YOU KNOW...

Some plumbing fittings have the potential to allow minute traces of metals to accumulate in water standing in the fittings for several hours.

Although the health risk is small, the Ministry of Health recommends that you flush a mugful of water from your drinking water tap each morning before use to remove any metals that may have dissolved from the plumbing fittings.

We are recommending this simple precaution for all households, including those on public and private water supplies.

REMOTE METER READINGS SAVE TIME

A job that would once have taken three days is being done in three hours, thanks to smart technology being used in the water meter trial currently underway in the district.

Meters are being installed by Veolia in a representative sample of randomly chosen properties as part of a QLDC study of water use.

Instead of having someone physically look at each meter and note the reading, the data is being gathered electronically during "drive

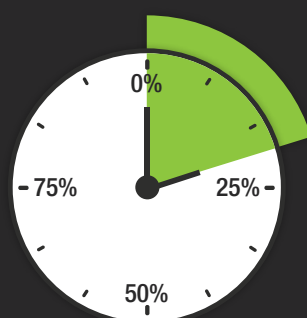
bys" that take Veolia staff just three hours to cover the Wakatipu.

Veolia's Operations Engineer Javier Hernandez says that all the meters are logged on the Council's GIS system which generates a map with the most efficient route to take when doing the readings. Each meter has an inbuilt radio transmitter that sends the data from the meter to a receiver in a vehicle. The information is downloaded back at the office ready for analysis.

The transmitters are surprisingly powerful, as Javier discovered when he was testing the system recently. Sitting in a vehicle on the Kelvin Peninsula, he was able to receive data from meters located on Queenstown Hill, on the other side of the Frankton Arm.

The main purpose of the water metering trial is to gather information about patterns of water use across the district. The results will help QLDC with our water demand management and the timing and extent of future water supply upgrades.

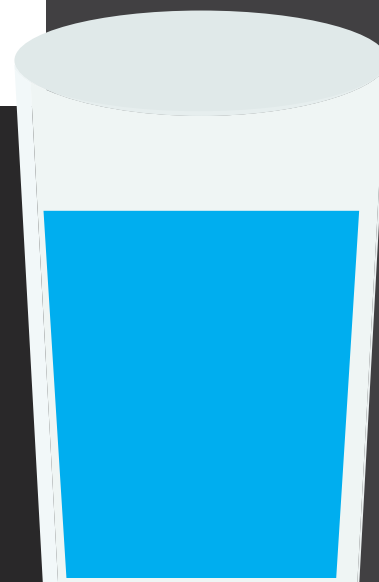
FLOW OR FREEZE?



Hands up everyone who leaves a tap trickling at night to stop the pipes freezing?

Early results from our water meter trial suggests that this habit is quite widespread with over 20 percent of metered properties showing water is flowing round the clock.

Some of those properties may have a leak; we probably won't know until spring when the risk of freezing pipes is over and people stop leaving the tap running overnight.



ARROWTOWN WATER SUPPLY

Maintenance work on Arrowtown's reservoir is progressing steadily, with the first of the town's three tanks back in commission after repairs and cleaning.

The completion of the work on the middle tank meant that the temporary chlorination of the Arrowtown water supply has finished.

The second tank is now empty and being checked and cleaned prior to being brought back into service.

At the same time, Veolia is modifying the overflow from the reservoir so it no longer runs through the Chinese Village. Instead, the overflow will be routed to Bush Creek.

Routine cleaning and maintenance on the third tank will be scheduled for next year, after the peak summer water demand period ends.



PRESTIGIOUS APPOINTMENT

Congratulations to Myles Lind (Manager Asset Planning) who was recently elected to the New Zealand Board of Institute of Public Works Engineers Australasia (IPWEA), a group dedicated to upholding and improving the status of engineering and management of public assets across New Zealand.

The national board is elected every year by a secret ballot of IPWEA NZ members. Those elected are in a good position to lead and advise on matters relevant to public asset management and engineering.

Myles believes it's a great opportunity to promote the QLDC brand: "We want to be a centre of excellence in local government engineering and asset management. It's about leading our sector and having other councils and consultancies come to us for advice. Being part of this board is a key step toward achieving that goal."



THE DISTRICT PLAN REVIEW IS COMING... WHAT PART WILL YOU PLAY?

The District Plan Review will establish a planning framework for the next decade. **vivian+espie** are committed to helping create a District Plan that serves the community and our environment.

Whether you are a landowner, property developer or community group, now is the time to have your say on the future of the district. Our decades of local experience and knowledge can provide you with expert assistance in this or any other planning matter.





PARKING CHANGES IN FRANKTON

Residents and businesses in two areas of Frankton are considering proposed changes to parking in their streets, designed to create more space for their vehicles and those of visitors, customers and staff.

The two areas are Glenda Drive and Margaret Place in the industrial area; and McBride St, Ross St and Douglas St in Frankton's main residential area.

In the industrial area, the problem is a shortage of on-street parking for businesses and their customers because of the number of vehicles being parked there for several days at a time. A recent survey showed that around a quarter of the cars, buses and trailers parked on the street were being left there for more than two days.

The proposed solution is to restrict on-street parking to 10 hours at a time, from 7am to 7pm Monday to Friday.

Several people living in McBride St and Ross St have contacted the Council to ask for changes to parking in the area. Some were concerned that having parking on both sides of the street left little room for vehicles to pass safely, while others complained that passengers were using their street as airport parking, making it hard for residents to find a park outside their homes.

At the same time, businesses at Frankton Corner were concerned that customers were having trouble getting a park.

In response to all these issues, the Council consulting on three changes to on-street parking in the area.

- A P120 zone will be created around Frankton Corner, between 8am and 6pm Monday to Friday. The carpark in Grey St will continue to have 10 hour free parking.
- Parking on most of McBride St will change to the west side of the street only, leaving more space for vehicles to pass each other safely. The speed humps will remain. There will be a 48-hour parking limit on McBride St, which will deter departing passengers from leaving their cars there for extended periods.
- The same system will apply on Ross St, with parking allowed on the south side of the street only, and a 48-hour parking limit.
- In Douglas St, the Council proposes to set a 48-hour limit for on-street parking between Humphrey St and Robertson St.

Consultation on these proposals is underway, with feedback closing on Friday 11 September. Anyone is welcome to make comments through the "Consulting On" section on the front page of the Council's website www.qldc.govt.nz



MOVE ALONG PLEASE

Our parking team often get queries from people who've been ticketed for parking on loading zones. They argue that popping into a shop and "loading" their purchase into their car, or "unloading" their rental skis after a day on the slopes should qualify them to use the loading zone.

Nope.

These areas are set aside for commercial vehicles to load and unload goods for local businesses. Commercial drivers who use the loading zones to park in for other purposes, like buying their lunch, face a \$40 fine, just like anyone else.

DRIVERS CONTRIBUTE TO TRAVELLER INFORMATION PROJECT

QLDC and NZTA are tapping into the local knowledge and daily driving experiences of residents this winter as they investigate the value of “crowdsourcing” to gather and share information on the state of roads around the district.

We have over 8000 followers on social media with 2000 more receiving our early morning road reports by email each day over winter. On days when the roads are icy or affected by snow, many people reply to our Facebook posts to share what they’re seeing on the roads.

Since July, a small-scale trial has been also underway with around 30 local motorists uploading their observations on road conditions to a new website that NZTA has developed.

Dave Smith of Abley Consultants Ltd, who is managing the crowdsourcing trial for NZTA, says the information that drivers contribute will help NZTA issue more accurate and timely road reports to the travelling public.

The trial website has just been opened up so that anyone can access it and contribute information on road conditions in the Queenstown Lakes District.

“We’re interested in hearing about any hazards or changing conditions that people notice while travelling, such as black ice, heavy snow, accidents etc,” Dave Smith says.

The website is an online form which works on all devices including smartphones and enables users to submit localised reports about any hazards. All the reports are assessed against other information sources to reduce the risk of errors or misinterpretation of road conditions.

The website also allows people to get other information on the status of key roads throughout the District.

Check it out at: <http://bit.ly/qldcroadreport> and follow QLDC’s updates on Facebook www.facebook.com/QLDCinfo and Twitter @queenstownlakes

The results of the trial will be evaluated at the end of the winter.

KINGSTON WAR MEMORIAL

Kingston has never had a war memorial or, to the best of our knowledge, even a plaque to honour local people who served in the first and second World Wars.

The Kingston & Districts Historical Society has undertaken a lot of research and identified at least four local Kingston people who served in the First World War and five who lost their lives in the Second World War.

The society wishes to honour these people with a memorial. If you have relatives who served, or any information that might help establish a complete list of names, please get in touch with Margaret Gibson, Gibson.suzuki@xtra.co.nz or 0274 336 829.

When it comes to
property management,
we’ve got this.



**WE URGENTLY NEED MORE PROPERTIES
TO MEET CURRENT DEMAND.**

WE OFFER:

- The NZ Property Manager of the Year 2015 to look after your home
- Landlord Protection Insurance **FREE** when signing up for 12 months
- Zero rental arrears policy: **GUARANTEED**
- Owner Service Guarantee: **FREE**
- We will get rid of your current Property Manager for you: **FREE**
- No stress, friendly smiles, and great communication: **FREE**

Make the change to the best NZ has to offer.
Contact us now for more details

VISIT US AT:
L1 Aurora House, Terrace Junction
Frankton
OR PHONE: 03 442 3815
www.housemart.co.nz



SIGNS OF THE TIMES

Businesses with sandwich boards on footpaths and sign-written vehicles parked up in prominent places for lengthy periods are receiving visits from QLDC staff to let them know that the new signage rules in the District Plan have come into force.

The rules are simpler, easier to understand and in many instances have made it easier to obtain consent, as long as applicants comply with the underlying principles.

One of the activities which has been attracting attention from the Council's compliance staff relates to sign-written vehicles and trailers that are parked in highly visible places for advertising purposes for hours or days at a time. That kind of semi-permanent advertising signage is prohibited under the new rules, unless the owner can show that the vehicle is parked up in public view for a legitimate reason.

The Council is also clamping down on sandwich boards and other footpath signs that aren't on private land or are bigger than the rules allow.

The new rules, which came into effect as part of Plan Change 48, balance the needs of businesses to advertise with protecting views, keeping the footpaths clear for pedestrians, and avoiding visual clutter.

Principal Enforcement Officer Anthony Hall says his team have had a good response from businesses,

as they've been starting with education to help people understand what the new rules meant and how they could comply.

"We're going round and talking to people first, and so far everyone has been really good to deal with.

"If we find a business isn't complying after that first visit, we can go back and remind them that they've had that discussion with our staff already, and that they need to comply. Enforcement action is always the last step we take."

WATER WEED

Lagarosiphon, the fast-growing water weed choking parts of Lake Dunstan, is well established in the Kawarau River and is threatening to colonise the Frankton Arm of Lake Wakatipu.

QLDC is working with the Otago Regional Council and Land Information NZ (LINZ) to develop and fund a comprehensive programme to stop Lagarosiphon spreading. One of the first steps will be to enlist the cooperation of local jetboat companies and recreational boaties to get them to avoid the infested areas of river, and check their hulls before entering the lake.

Mayor Vanessa van Uden says that in the last three years the area of the Kawarau River below the lake outlet infested with Lagarosiphon has grown 150 percent from 4 hectares in 2012 to over 10 hectares now.

Small clumps of the pest plant have been found in the Frankton Arm in the past, and were able to be removed before they spread. However, with the amount of Lagarosiphon in the river expanding, the risk of colonisation in the lake is higher.

That would create a new threat, that the weed could form a natural dam above the bridge and inhibit water flow into the Kawarau River.

Water flow will naturally carry the weed downstream in the river but plants are also transported upstream and into the lake by boats.

"Boat owners took the "Check, Clean, Dry" message to heart to keep Didymo out of our lakes, so we hope that they will do the same for Lagarosiphon," Mayor van Uden says. "Lagarosiphon is at least easy to spot, so we have high hopes that we can stop plants being brought into the lake."

WINTER DRIVING TIPS

Winter's not done with us yet, so here are our top tips for safe driving in the snow and ice



Keep a set of chains in your vehicle, and make sure everyone who drives it knows how to use them



Sign up for the QLDC early morning road reports at www.qldc.govt.nz and follow us on **FACEBOOK** and **TWITTER** to get updates on the latest conditions



Have an ice scraper in your glove box and make sure your windscreen, wing mirrors and windows are clear before you set off. Pick one up from any QLDC office



Keep well back if you find yourself following a grit truck – you'll get the benefit of the fresh grit without scratches on your paintwork



Be alert for black ice, which can form anytime the road is damp and the temperature drops below zero – even on a sunny day



**RATING INFORMATION IS
CURRENTLY UNAVAILABLE ON OUR
WEBSITE AS WE ARE STRIKING
THE RATES FOR 2015/16.**

We expect to have completed this work by the end of August. In the meantime, if you need historic rates information, please phone us on 03 441 0499 (Queenstown) or 03 443 0024 (Wanaka).

**FINAL RELEASE OF
CORPORATE TABLES**
Contact www.qldc.govt.nz

greenstone
ARTS & CULTURE
presents

**HUEY LEWIS
AND THE NEWS**
Heart of Rock & Roll - I Want a New Drug
Power of Love - If This Is It - Heart and Soul

RED ZEPHYRUS
Can't Fight This Feeling - Keep on Loving You
Take It On The Run - Time for Me to Fly

MELISSA ETHERIDGE
Bring Me Some Water - Like The Way I Do
I Want To Come Over - I'm The Only One

**GIBBSTON VALLEY WINERY
SUMMER CONCERT**
QUEENSTOWN

SAT 23 JAN

TICKETS ON SALE NOW

STRICTLY LIMITED LOCAL TICKETS AVAILABLE AT:
1-SITE QUEENSTOWN • 1-SITE WANAKA
A TASTE OF GIBBSTON ARROWTOWN • GIBBSTON VALLEY WINERY

ONLY \$89!*

or \$99* from **TICKETEK** www.ticketek.co.nz

www.greenstoneentertainment.co.nz

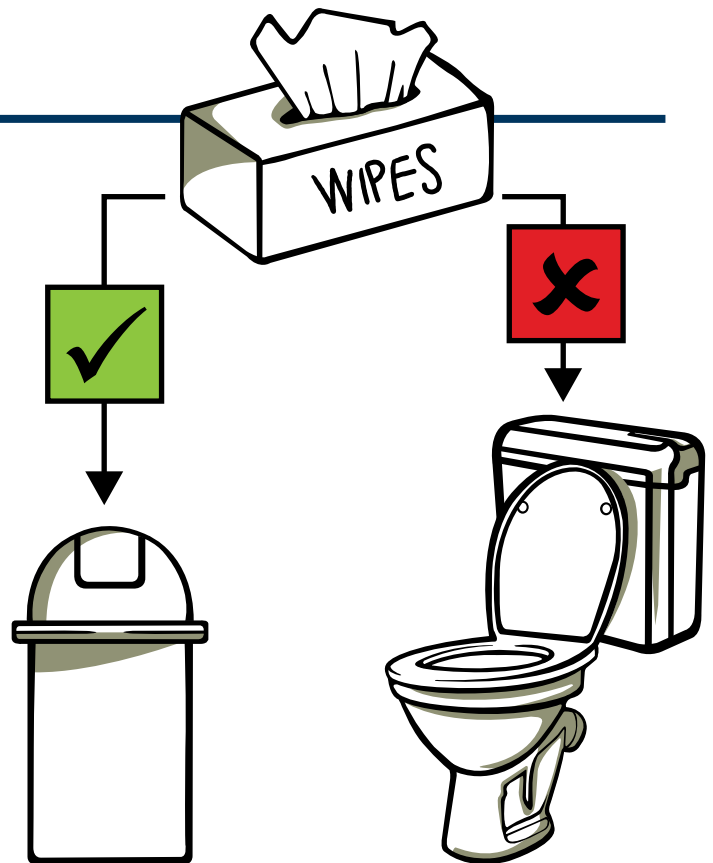
“FLUSHABLE” – YEAH, RIGHT

While QLDC is working with businesses to get fats, oils and grease out of our sewerage system, families can do their bit to keep the pipes clear by not flushing wipes down the toilet.

Chief Engineer Ulrich Glasner says that the products, which are often branded as “disposable” or “flushable”, are not suitable to be put into the wastewater system.

Unlike toilet paper, which disintegrates easily, the wipes cause blockages in pumps and pipes. Some are biodegradable, but take a long time to break down once they reach the treatment plant.

Rather than flushing these wipes away, the best way to dispose of them after use is to put them into your wheelie bin or rubbish bag so they go to landfill.



SCUTTLEBUTT ON-LINE

Would you be happy to read this on-line rather than in print?

We post Scuttlebutt to around 7500 non-resident ratepayers six times a year. If you're one of them

and you'd be happy to read it online instead, please email services@qldc.govt.nz and ask to be switched to our email distribution list instead.

Just put “newsletter” in the subject line and

remember to include your name and postal address so we can take you off the print mailing list.

You'll not only receive “Scuttlebutt” earlier, you'll help QLDC trim the amount we spend on postage and printing to

keep you informed – that's a win / win.

Every issue of Scuttlebutt also goes on our website www.qldc.govt.nz so it's available to you no matter whether you live in our district or on the other side of the world.

TRADE WASTE BYLAW

Fats, oils and grease – the same substances that can clog up your arteries – have been the most common cause of blockages and overflows in our sewers.

Now that the Council has adopted a Trade Waste Bylaw, we're moving towards a “healthier” wastewater system.

The bylaw establishes three types of waste – permitted, conditional and prohibited – to regulate the type and amount of substances that businesses can discharge into the wastewater system. For businesses like restaurants and other commercial kitchens and food outlets, the main impact will be that they need to install and maintain grease traps.

Businesses that discharge waste into the system will need to register with the council, obtain a licence, test the quality of their discharge and report on compliance.

It's not only food premises that will need to comply with the new regime. Other businesses, like hairdressers, pharmacies, laundries and dentists, that also discharge potentially harmful substances, will also be covered by the bylaw.

The bylaw allows for gradual implementation, with education being the first step. Chief Engineer Ulrich Glasner says that QLDC staff will help businesses understand the new requirements so they can comply.

Full implementation is about a year off, and the Council will be consulting on the level of fees when the 2016-17 Draft Annual Plan is released in March or April.

WILDING WORK ON THE REMARKABLES



If you've driven between Frankton and Kingston recently, you may have noticed tree felling work underway from Jacks Point south.

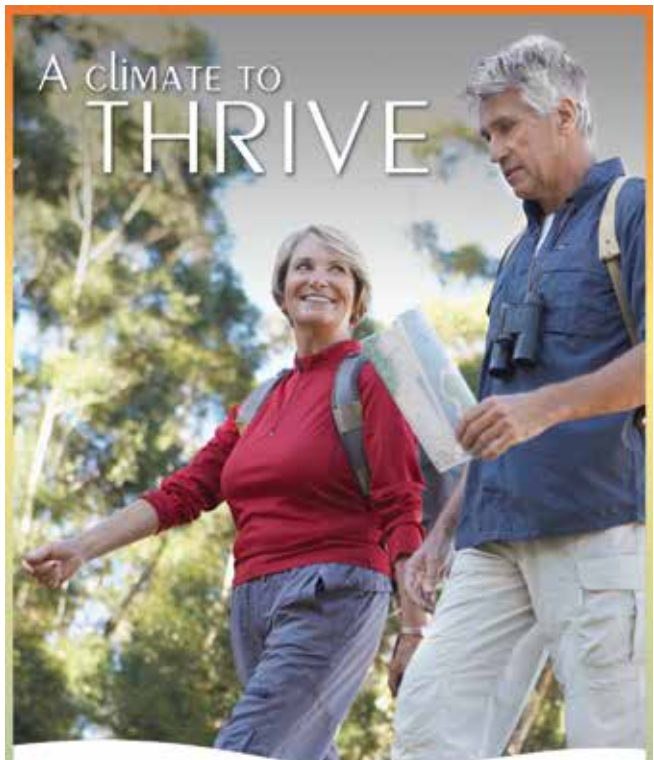
This is organised by the Wakatipu Wilding Conifer Control Group to remove self-seeding pest trees like Douglas Fir, Larch and Corsican Pine that are spreading seed on the front faces of the Remarkables.

By removing these invasive trees, the WCG is protecting flora and fauna unique to the Otago Region.

The group has been working with local landowners to remove the seeding trees.

In the 2015-16 season, work will continue between Jack's Point and Frankton, removing seeding trees which would otherwise aid the spread of wildings to grow up the faces of the Remarkables above the road.

Interested in the work of the Wakatipu Wilding Conifer Control Group? Come to the annual reporting night at the Skyline on 10 September, with guest speaker Maggie Barry, Minister of Conservation.



A CLIMATE TO THRIVE

Throw away the paint brush and the ladder! Instead, spend more time doing the things you love.

A move to Wanaka Retirement Village allows you to do just that.

In desirable Meadowstone Drive, close to cycling and walking trails, the lake and township, our boutique village has the best of Wanaka right on your doorstep.

**VILLA WAITING
LIST NOW OPEN.
REGISTER YOUR
INTEREST TODAY!**

To find out more, visit
www.wanakaretirementvillage.co.nz

7 Meadowstone Dv, Wanaka 9305.
To arrange an inspection of an apartment
or villa, please call Rosemary Brader at
First National Wanaka on 03 443 0177.



PARTY AT THE PARK

Skateboarders will be celebrating at the end of the month when the extension to the Wanaka Skatepark has its official opening.

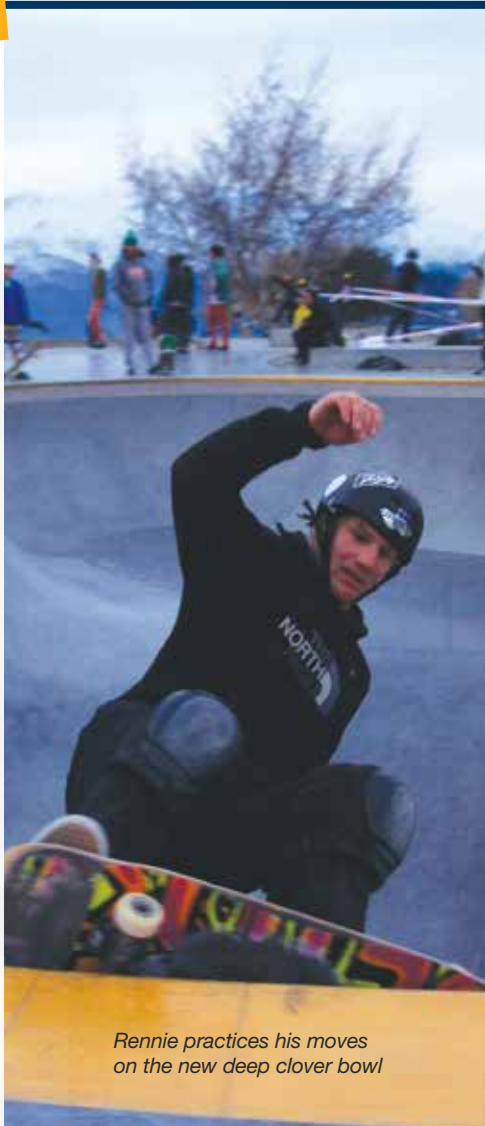
Stage 1 and 2 of the extensions have been a long time coming but they're finally finished, thanks to the fundraising efforts of the local skaters plus generous funding from the Central Lakes Trust, Otago Community Trust, benefactor Dick Schulze and the Council.

The total cost of this part of the project is \$355,000. Work on Stage 3 of the extension is expected to start in 2019.

Eddie Spearing, who's championed the skate park project for almost a decade, says the new facility will be great for local skaters to develop their skills as well as acting as a drawcard for visiting skateboarders and seasonal snowboarders and skiers.

He expects national and international competitive events will be held there in the future.

"The idea has always been to create a wider user base and come up



Rennie practices his moves on the new deep clover bowl

with a competitive environment for a 'Bowl-a-Rama' type event to tie in with the half pipe competitions at the Winter Games NZ."

The new features, including a deep clover bowl, give choice and challenge for users. The extra space lets boarders, skaters and bikers practice their moves without colliding.

"It's been nine years from start to finish, with a hell of a lot of backwards-and-forwards, but it's definitely worth it."

Everyone's welcome at the opening, on Saturday 29 August from 12 noon. After the official ribbon-cutting, there will be skating demonstrations, music and a free sausage sizzle. Bring your wheels and have a go.

Audi quattro
Wintergames^{NZ}



CLOSING CEREMONY ON 'SUPER SUNDAY' 30TH AUGUST

Head up to Cardrona Alpine Resort for the final day of competition in this year's Audi quattro Winter Games NZ. There are three spectacular snowboard and freeski competitions plus the closing ceremony featuring live music, special guests and an amazing wing-suit flight and skydive

landing by Queenstown adventurer Chuck Berry. The snowboard halfpipe World Cup is expected to feature Olympic gold medallists Louri 'iPod' Podladtchikov (SUI) and Kelly Clark (USA) alongside other world class athletes. Head downtown for the JUCY Meltdown Concert in

Wanaka featuring Arma Del Amor and Kora.

IT'S ALL FREE TO WATCH.

10AM-12PM
FIS Snowboard World Cup Halfpipe

2PM-4PM
Winter Games NZ Snowboard & AFP Freeski Big Air Finals

4PM-5PM
Closing Ceremony at Cardrona

7.30PM-10PM
JUCY Meltdown Concert, Wanaka Games Village

QUEENSTOWN GARDENS WIN INTERNATIONAL RECOGNITION



It's official! The Queenstown Gardens is one of the top destinations for visitors to our district, according to the international travel website, TripAdvisor.

In June, TripAdvisor ranked the Queenstown Gardens number two in its list of the best things to do in Queenstown, and awarded the park and facilities a Certificate of Excellence, based on the consistently great reviews posted by travellers.

In a district chokka-block full of high-profile visitor attractions and activities, that's an achievement that the Council is very proud of.

Horticulture team Leader Clare Tomkins says that the award recognises the hard work the Horticulture Team does in making Queenstown Gardens the beautiful place that it is.

"They are a great team, and have a real passion for the gardens. It reinforces that it is very popular with visitors and residents alike, and having a free and accessible park close to the CBD is a very important part of the visitor experience."

Not only does Queenstown Gardens contain several different types of gardens including a native area and a rose garden, it is also home to activities such tennis, bowls, ice skating, frisbee golf and a skatepark.

Queenstown Gardens has strong historical associations, having been established in 1887 by members of the town's first Borough Council.

Nobody knows the local Wanaka market better

HOME & CO.

PROPERTY MANAGEMENT

Do you own or are you building or buying a rental property?

The H&C Property Rental Process provides a basis for decision-making. Free appraisals & discussion.

COLLEEN TOPPING

NZ Property Manager of the Year 2013 & 2010 - Real Estate Institute of NZ
• More than a decade of local experience

My Standards

- Personalised Service
- Professional qualifications
- Excellence is my minimum

021 225 RENT

(021 225 7368)

rent@homeandco.co.nz

www.homeandco.co.nz



PRISONERS BENEFIT FROM DELETED BOOKS

Prisoners at the Otago Corrections Facility in Milton have access to a wider range of reading material thanks to a casual conversation earlier this year between Lake Hawea librarian Jane Crawford and a friend involved with the Howard League for Penal Reform.

Jane was put in touch with staff from Milton prison, who were absolutely delighted with the offer of books for their library. Since then, boxes of deleted books from Wanaka and Hawea Libraries and donated books from local Hawea residents have been given to the men's prison in Milton.

"The men at the prison are really grateful to receive the Hawea Library's excess books," says Prison Manager Jack Harrison.

"Prisoners don't have access to electronic resources the way the public do so what they are reading is in the traditional format of books and magazines."

Many offenders in New Zealand have low levels of literacy and numeracy, so having a range of genres and reading levels is really helpful for men to develop both an interest and skill in reading, Mr Harrison says.

"The prison library service plays an important role in developing literacy skills; offering a valuable, constructive activity and helping offenders to develop new interests and their understanding of the world."

For many inmates, their time in prison is the first opportunity they have had to read for pleasure.

"We're constantly refreshing our collections so it's great to be able to send books no longer in use by the Queenstown lakes community to people who will really benefit from them," says QLDC library services manager Jo McElroy.

Deleted books from Hawea library are also earmarked to be sent to an Orphanage in Nepal and to Vanuatu.



Lake Hawea Librarian Jane Crawford and Otago Corrections Facility contracts and services manager Peter Craik with the latest lot of books donated to Milton Prison.

SELF-SERVICE AT THE LIBRARIES

New self-service kiosks have just been launched at Queenstown, Arrowtown and Wanaka libraries.

The new technology allows library members to issue their own books and collect and issue reserved books. They also have lots of other great features like an 'email your receipt' tool or the ability to change the screen prompts to different languages.

"We're really pleased to be able to offer such convenience and flexibility to our customers," QLDC Library Services Manager Jo McElroy says. "It will let people check out their own items, which will be especially useful when they're in a hurry and staff are busy with other customers. But of course, our Librarians will still be available for those who prefer checking out items in person."

New security gates have also been introduced as part of the project, allowing more capability to report on foot traffic and reduce the number of books being lost.



QLDC Library Services Manager Jo McElroy demonstrating the new self-check kiosks at a launch at Queenstown Library last month.

The opening hours at Kingston Library are changing from:

~~TUESDAY 3.00pm-5.00pm and
SATURDAY 10.00am-12.00pm to~~

SATURDAY
10.00am-2.00pm

We're pleased to welcome long-time Kingston local Margaret Gibson as the new Kingston Library Assistant. "Like George, Margaret has been volunteering at Kingston Library for some time, it's great to have her start in a permanent position," Mrs McElroy said.

RETIREMENT, LET'S TRY THAT AGAIN

Local Kingston man George Munro is having a second go at retirement, leaving his post as Kingston Librarian after nearly twenty years in the job.

At 80, George may well be the oldest library assistant in New Zealand. He retired to Kingston back in 1998, but had owned his house as a holiday home for long before that. He started volunteering at the library around this time and has been holding the fort in a paid role since 2006, witnessing many changes during his tenure.

"I've seen Kingston change from a mainly holiday place with a lot of retired folk, to a much younger community and it has grown quite a bit in the last 30 years. When the Library was opened there was no computer so since I've been here, the Kingston Branch has come a long way with technology. This will continue as we move with

the innovations that are happening in the Libraries in this district," Mr Munro explains.

QLDC Manager Library Services Jo McElroy says that under George's care the Kingston Library has become a great asset to the local community. "We'd like to thank George for all his hard work and dedication over the many years he has been with us," she says.

George now plans to retire "properly" this time and spend more time enjoying his family and friends.




Make the most of your holiday home.

It's free to list!*

*List for free and pay on success with our Pay per Booking plan

bookabachTM

Earn income from your holiday home by listing on NZ's favourite holiday rental website – now part of the global HomeAway network.



SAVE THE DATE: OPEN DAY – SUNDAY 27 SEPTEMBER



Come and check out all the great facilities we have on offer at Queenstown Events Centre and Frankton Golf Centre. **Keep an eye on Facebook or sportrec.qldc.govt.nz for all the details.**



ADULT SYNCHRO – A GREAT NEW WAY TO STAY FIT

Last month we invited adults along to try Synchronised Swimming at Alpine Aqualand. The programme has been hugely popular with kids and as it turns out, adults love it too. The trial classes were a huge hit and as a result, we've started a weekly class.

If you're interested in trying something a bit different, you'll find all the details at sportrec.qldc.govt.nz

JOIN THE FIGHT AGAINST CANCER

29
AUGUST
2015

TAKE PART IN THE LES MILLS OPEN DAY FUNDRAISER AND HELP RAISE FUNDS FOR THE CANCER SOCIETY – 29 AUGUST 2015



Four times a year we invite everyone along to the Events Centre to try out the new Les Mills Group Fitness Releases. This time we're doing something a bit special, turning our new release day into a motivating fundraiser.

Sweat it out in the Group Fitness Studio to show support for anyone you know fighting cancer – together we can make a difference. Take part in as many classes as you like – they're all free – then make a donation of your choice to the Cancer Society.

All welcome. Visit sportrec.qldc.govt.nz for the full timetable of classes.

FREE
MAMMOGRAMS

FREE MAMMOGRAMS AVAILABLE AT QUEENSTOWN EVENTS CENTRE

Breast cancer is the most common cancer in New Zealand women. Over 600 women die from it each year and as we get

older, the risk increases. That's why it's so important, whether you have a family history or not, to get checked regularly.

The National Breast Screening Unit will be parked at Queenstown Events Centre until 20 October. This publicly funded programme offers free mammograms to eligible women aged between 45 and 69 years.

More details about the programme can be found at www.nsu.govt.nz or drop by the bus for a chat.



THE **REVIVE** 12 WEEK CHALLENGE IS BACK

This is the positive charge your body has been waiting for! Everyone has a different idea of what constitutes a healthy lifestyle. We think the first step is to get the basics right – regular activity and getting the right food on our plates.

That's why we're bringing back **REVIVE** – the 12 week challenge with a difference. We're making it our mission to get our community on track by providing support and education in a positive, motivating environment. We genuinely care about your results and will support you through the blood, sweat and tears to get there.

At the forefront of **REVIVE** is well-known local Personal Trainer Haylee Roberts. Haylee has been professionally involved in fitness and nutrition since 1991.

Haylee's philosophy is all about having a holistic approach to a balanced lifestyle. While weight loss is usually a common focus within her area of work, she's also passionate about sport, youth training and sport psychology.

She's excited about bringing **REVIVE** back to Alpine Health and Fitness: "It means everything to me to be a part of this programme. I feel honoured to be involved in something that makes so much difference to people's lives. The personal sense of satisfaction leaves me on a high long after the programme is finished," says Haylee.

"This programme develops pathways to explore other avenues of fitness and wellbeing. It changes family dynamics for the better and empowers those involved to take control of their immediate lives and make good choices, which essentially expand like a ripple effect throughout the community. We build long-lasting friendship too!" she says.

Registrations for **REVIVE open on 31 August. For more information and prices, visit sportrec.qldc.govt.nz**

“The sense of achievement you get on the final day of the 12 weeks is significant. Looking around at each other knowing you've made a difference and reached personal goals some never imagined possible.”

REVIVE LEADER, HAYLEE ROBERTS



RE 
VIVE
12 WEEK CHALLENGE

It's back! The positive charge your body has been waiting for.

TRAINING | NUTRITION | WEIGHT LOSS

Join us on a journey of dedication and inspiration – the best opportunity to revive your lifestyle.

REGISTRATIONS OPEN 31 AUGUST

Info evenings: Sept 2nd and 9th.
Details and prices at
sportrec.qldc.govt.nz



Alpine Health & Fitness
QUEENSTOWN LAKES DISTRICT COUNCIL

Queenstown Events Centre, Joe O'Connell Drive, Frankton
T 03 450 9005 | E revive@qldc.govt.nz

New Zealand Shake Out™



Jorja Dawson, aged 7 from Queenstown Primary School, shows how to Drop, Cover and Hold in an earthquake

Over 3000 school students and pre-schoolers in our district are signed up to take part in the national earthquake drill in October.

QLDC's Emergency Management Officer, Trevor Andrews, says that when young people learn that "Drop, Cover and Hold" are the right things to do in an earthquake, they take that lesson home to their families.

Arrowtown, Remarkables, Queenstown, Shotover and Wanaka Primary Schools have all registered, and Trevor is encouraging the other schools in our district to follow suit.

Businesses are also beginning to sign up for New Zealand ShakeOut. Some will be encouraging their customers to take part in the drill alongside their staff, while others will also be taking the opportunity to review and update their business continuity plans.

The national target is to have 1.5 million Kiwis drop, cover and hold on Thursday 15 October. It's an ambitious target, building on the 1.3 million who took part in the last drill, in 2012.

You can sign up your family, business, club or just yourself online at www.shakeout.govt.nz

QLDC CONTACT LIST AND HOURS

QLDC & SERVICE CENTRES

Queenstown Office:

10 Gorge Road
Private Bag 50072
Queenstown
Customer Services:
Phone: 03 441 0499
E-mail: services@qldc.govt.nz
www.qldc.govt.nz

Wanaka Office:

47 Ardmore Street
Wanaka
Phone: 03 443 0024
Office Hours:
Mon – Fri 8.00am – 5.00pm

QUEENSTOWN EVENTS CENTRE

Arrowtown Athenaeum Hall
Queenstown Memorial Hall
Lake Hayes Pavilion
Lake Wanaka Centre
Alpine Aqualand
Wanaka Pool
Sports fields
Phone: 03 450 9005

TRANSFER STATIONS

Wakatipu: End of Glenda Drive
Frankton Industrial Area
Phone: 03 4510106
Upper Clutha: Ballantyne Road
Phone: 03 443 6063

HARBOURMASTER

Phone: 027 434 5289 and 027 414 2270
Email: harbourmasterqt@smsl.co.nz

LIBRARIES

Arrowtown Buckingham Street Phone: 03 442 1607
Hours: Monday – Friday 10.00am – 5.00pm Saturday 10.30am – 12.30pm
Glenorchy Islay Street Phone: 03 442 4378
Hours: Wednesday 1.30pm – 3.30pm Friday 1.30pm – 3.30pm
Queenstown 10 Gorge Road Phone: 03 441 0600
Hours: Mondays, Tuesdays, Wednesdays & Fridays 9.00am – 5.30pm
Thursdays 9.00am – 7.00pm Saturdays 10.00am – 5.00pm
Wanaka Dunmore Street Phone: 03 443 0410
Hours: Mondays, Tuesdays, Wednesdays & Fridays 9.00am – 5.30pm
Thursdays 9.00am – 7.00pm Saturdays 10.00am – 5.00pm
Hawea 23 Myra Street Phone: 03 443 9371
Hours: Monday & Saturday 10.00am – 12noon
Tuesday & Wednesday 10.00am – 5.00pm
Kingston Phone: Queenstown 03 441 0600
Hours: Tuesdays 3.00pm – 5.00pm Saturday 10.00am – 12noon
Makarora Phone: 03 443 8342
Hours: Tuesday 11.00am – 1.00pm & Thursday 3.00pm – 5.00pm

Scuttlebutt is published bi-monthly by Queenstown Lakes District Council to inform ratepayers and residents of council activities.

EDITOR: MICHELE POOLE

✉ michele.poole@qldc.govt.nz
Feedback and ideas are welcome.

TO ADVERTISE CONTACT:

Sarah Douglas
✉ sarah.douglas@qldc.govt.nz