

13 HISTORIC HERITAGE

13.1 Purpose

The purpose of this chapter is to promote the sustainable management of the District's historic heritage¹ features. These features are an important part of the amenity and character of our natural, physical and cultural heritage. Protecting these helps retain the District's character, history, and sense of place. This will be achieved by identifying and recognising heritage values, which can then be offered protection through the Plan.

13.2 Identification and Protection

The District's heritage features are represented in the Inventory of Protected Features. The number of individual items stands at several hundred and although they all have a level of heritage value, some can be grouped and categorised according to their relative level of importance. This in turn allows a scale of protection to be applied. For buildings structures and features, this means that there are three categories, 1 to 3, with Category 1 being the most significant. It is noted that not all historic heritage will be captured in the Council's schedule, and due regard to matters of national importance will still be required.

Queenstown Lakes District Council believes that its schedule of protected features is well informed and robust. It also acknowledges that it is a snapshot of features as they stood at a point in time and may subsequently change. In order to accommodate anticipated changes it will review this schedule at the midpoint in the life of the Plan (i.e., in five years from becoming Operative.) Nominations for inclusions, removals or amendments to Categories for individual features will be welcomed from the public, but must contain sufficiently detailed and robust reports in line with assessments that Council use. They must include the written consent of the owners and;

- 13.2.1 For heritage precincts and landscapes, a report from an appropriately qualified and experienced conservation / landscape architect is required. These may include site specific reports from government bodies with a remit for heritage, such as Heritage New Zealand Pouhere Taonga and the Department of Conservation.
- 13.2.2 For sites of significance to Maori, a detailed assessment of the extent of the site and related values must be obtained from the appropriately mandated iwi.
- 13.2.3 For individual buildings and structures, a report from a suitably qualified conservation architect, using the Council's criteria, and for Category 1 features a Conservation Plan.
- 13.2.4 For archaeological sites, a detailed assessment by a suitably qualified and experienced archaeologist.

¹ Sec 2A RMA

HISTORIC HERITAGE 13

13.3 Information Requirements

Development affecting historic heritage can be a complex matter because of the sensitivity of the values associated with them. Users of the Plan are directed to submit sufficient detail with such applications to allow Council Planners to process those applications. The information above, gives an indication of the level of detail required, but this will be decided on a case by case basis, and will be proportionate to the level of effects. Council encourages early consultation on development proposals with heritage professionals and community heritage groups, before the design stage.

13.3.1 Archaeology Alert Layer

Given the large number of archaeological sites within the District, it is not possible to map them all for the purposes of this Plan. Consequently an alert layer has been populated that identifies particularly significant groups of sites or significant sites with unknown extents. This layer is for information purposes only and users of the Plan are referred to early consultation with Heritage New Zealand.

13.4 Other Relevant Provisions

13.4.1 District Wide

Attention is drawn to the rules elsewhere in the Plan that may apply **in addition** to the rules in this chapter. Where rules are breached in other chapters of the Plan, then resource consent will be required in respect of those matters, including:

- 13.4.1.1 Earthworks
- 13.4.1.2 Signs
- 13.4.1.3 Town Centres
- 13.4.1.4 Vegetation (for protected trees)

13.5 Objectives and Policies

- 13.5.1 **To recognise and protect historic heritage features in the District from the adverse effects of land use, subdivision and development.**
 - 13.5.1.1 Ensure historic heritage features within the District that warrant protection, are recognised in the Inventory of Protected Features.
 - 13.5.1.2 Protect historic heritage features against adverse effects of land use and development, including cumulative effects, proportionate to their level of significance.

HISTORIC HERITAGE 13

- 13.5.1.3 Require the mitigation of development affecting historic heritage, where it cannot be reasonably avoided, to be proportionate to the level of significance of the feature.

13.5.2 To provide for the sustainable use of historic heritage features.

- 13.5.2.1 Encourage the ongoing economic use of heritage buildings and sites by allowing adaptations and uses that do not permanently adversely affect heritage values and are in accordance with best practice.
- 13.5.2.2 Encourage the maintenance of historic heritage features and allow minor repairs and maintenance to be achieved without the need for consents.

13.5.3 To recognise the diversity of historic heritage features, landscapes and values associated with them.

- 13.5.3.1 Identify the heritage values of precincts, buildings, structures, sites, archaeological sites, landscapes and sites of significance to Maori.
- 13.5.3.2 Ensure that decision making on development proposals, on the effects on tangible and non-tangible values of sites of significance to Maori, are informed by those mandated to do so.
- 13.5.3.3 Recognise and protect the different layers of history within heritage landscapes and the relationship between these layers to retain their cultural meaning and values.
- 13.5.3.4 Avoid duplication of consents with other statutory bodies on archaeological sites.

13.5.4 To enhance historic heritage features where possible.

- 13.5.4.1 Encourage opportunities to enhance historic heritage features, including the need for the provision of interpretation and by offering possible relaxations in rules elsewhere in the Plan, to accommodate better planning outcomes for heritage, on a case by case basis.
- 13.5.4.2 Recognise the value of long term commitments to the preservation of heritage values in the form of covenants and consent notices.
- 13.5.4.3 Accept that ongoing improvements to buildings, including earthquake strengthening and other safety measures, will assist in providing for their ongoing use and longevity.

HISTORIC HERITAGE 13

13.6 Rules

13.6.1 The following tables describe activities, standards and subsequent level of activity for resource consent purposes. Any activity that is not Permitted requires resource consent, and any activity that is not specifically identified in a level of activity, but breaches a standard, requires resource consent as a Discretionary activity.

13.6.2 The following abbreviations are used in the tables:

P	Permitted	C	Controlled
RD	Restricted Discretionary	D	Discretionary
NC	Non Complying	PR	Prohibited

Table 1 General			
<i>Rule</i>	<i>Activity</i>	<i>Standard</i>	<i>All heritage features</i>
13.6.3	Repairs and maintenance	<p>Minor repairs and maintenance on all protected buildings and features, including contributory and non-contributory buildings² in heritage precincts.</p> <p>This includes minor repair of building materials and includes replacement of minor components such as individual bricks, cut stone, timber sections, roofing and glazing. The replacement items should be of the original or closely matching material, colour, texture, form and design.</p> <p>Works that do not meet these standards are classed as</p>	P

² Contributory buildings - are those that contribute to the significance of a heritage precinct but may not be worthy of individual protection. They may contain significant heritage fabric, architecture or positioning that adds value to the precinct.

Non –contributory buildings - have no identifiable historic heritage significance or fabric. Their current impact will either be adverse or neutral. They are identified within a precinct because any future development of the site may impact on the contributory elements.

HISTORIC HERITAGE 13

		alterations.	
13.6.4	Subdivision	Subdivision of any site containing all or part of a protected feature.	D

Table 2 Buildings, structures and features

<i>Rule</i>	<i>Activity</i>	<i>Standard</i>	<i>Cat 1</i>	<i>Cat 2</i>	<i>Cat 3</i>
13.6.5	Demolition	<p>Works that result in damage, substantial removal from the site, destruction of any, or all, significant elements of the historic fabric or characteristics of a building or feature, involving (but not limited to) the removal or replacement of walls, windows, ceilings, floors, roofs and any associated additions.</p> <p>*Restricted Discretion is limited to: The extent of the demolition and the cumulative effects on the building or feature.</p>	PR	NC	RD*
13.6.6	Relocation	<p>Works that result in an existing building or feature being relocated within the same site.</p> <p>*Restricted Discretion is limited to: The physical effects on the heritage fabric and the effects on the setting of the feature.</p>	PR	NC	RD*
13.6.7	External alterations	<p>Works affecting the fabric or characteristics of buildings and features. Additions to buildings such as signs, lighting and street furniture are also included.</p> <p>*Restricted Discretion is limited to: The extent of the alteration and the cumulative effects on the building or</p>	D	RD*	RD*

HISTORIC HERITAGE 13

		feature.			
13.6.8	Internal alterations	<p>Works affecting the historic fabric or characteristics of a building including (but not limited to) the partial removal and replacement of decoration, windows, ceilings, floors or roofs that only affect the interior of the building or object.</p> <p>*Restricted Discretion is limited to: The extent of the alteration and the cumulative effects on the building or feature.</p>	D	RD*	P
13.6.9	Development within the curtilage or setting ³	<p>Works including earthworks, signage, lighting, street furniture, new buildings and structures.</p> <p>*Restricted Discretion is limited to: The extent of the development and the cumulative effects on the building or feature, and its setting.</p>	D	RD*	RD*

Table 3 Heritage precincts

<i>Rule</i>	<i>Activity</i>	<i>Standard</i>	<i>All precincts</i>
13.6.10	Demolition	<p>Demolition of contributory buildings, other than those individually listed. Includes works that result in damage or destruction of any, or all, significant elements of the fabric or characteristics of a building, involving (but not limited to) the removal or replacement of walls, windows, ceilings, floors, roofs and any associated additions.</p>	D

³ Setting means the area around and/or adjacent to a place of cultural heritage value that is integral to its function, meaning, and relationships. Setting includes the structures, outbuildings, features, gardens, curtilage, airspace, and accessways forming the spatial context of the place or used in association with the place. Setting also includes cultural landscapes, townscape, and streetscape; perspectives, views, and viewshafts to and from a place; and relationships with other places which contribute to the cultural heritage value of the place. Setting may extend beyond the area defined by legal title, and may include a buffer zone necessary for the long-term protection of the cultural heritage value of the place. ICOMOS New Zealand Charter 2010

HISTORIC HERITAGE 13

13.6.11	Demolition	Demolition or removal of non-contributory buildings and features.	P
13.6.12	Relocation	Relocation of contributory buildings, within or from a heritage precinct.	D
13.6.13	Relocation	Relocation of non-contributory building or feature within a heritage precinct.	D
13.6.14	External alterations	Contributory building or feature. *Restricted Discretion is limited to: The extent of the development and the cumulative effects on the building or feature, and its setting, including the precinct, other contributory and individually listed buildings and features.	RD*
13.6.15	External alterations	Non Contributory *Restricted Discretion is limited to: The extent of the development and the cumulative effects on the setting, including the precinct, contributory and individually listed buildings and features.	RD*
13.6.16	Internal alterations	Contributory buildings and features not individually listed. Non contributory buildings and features.	P
13.6.17	Development	Works including earthworks, signage, new buildings and structures.	D

Table 4 Sites of Significance to Maori

<i>Rules</i>	<i>Activity</i>	<i>Standard</i>	<i>All sites</i>
13.6.18	Development	Any development that affects the Maori values of the feature. Written approval from tangata whenua is required. Failure to provide this will result in the Limited Notification to tangata whenua.	D

HISTORIC HERITAGE 13

Table 5 Archaeological sites

<i>Rules</i>	<i>Activity</i>	<i>Standard</i>	<i>All sites</i>
13.6.19	Modification, damage or destruction of an archaeological site	Any alterations to an archaeological site (scheduled or not) included within the provisions of an authority to modify, damage or destroy under the HNZPTA 2014 ⁴ , provided that there are no other effects on heritage .	P
13.6.20	Modification, damage or destruction of an archaeological site	Any alterations to a scheduled archaeological site included within the provisions of an authority to modify, damage or destroy under the HNZPTA 2014, provided that there are only minor other effects on heritage . *Restricted Discretion is limited to: The extent of the development on any heritage feature that is not covered under the archaeological authority.	RD*
13.6.21	Modification, damage or destruction of an archaeological site	Any alterations to a scheduled archaeological site included within the provisions of an authority to modify, damage or destroy under the HNZPTA 2014, where there are more than minor other effects on heritage .	D
13.6.22	Modification, damage or destruction of an archaeological site	In breach of the HNZPTA 2014.	PR

⁴ Heritage New Zealand Pouhere Taonga Act 2014

HISTORIC HERITAGE 13

Table 6 Heritage landscapes

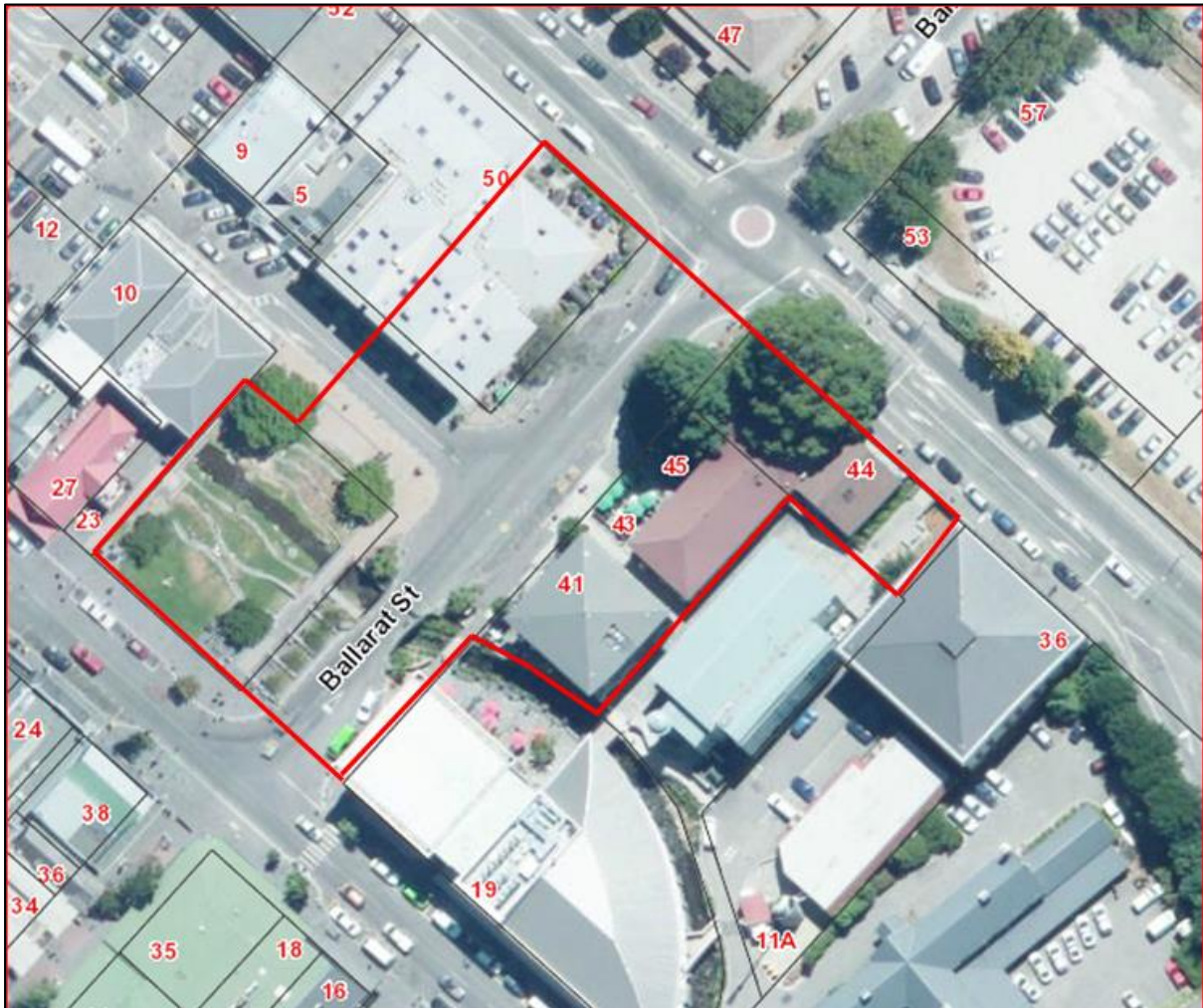
Rule	Activity	Standard	All landscapes
13.6.23	Development in heritage landscapes	<ul style="list-style-type: none"> • Earthworks over 200m³ (but excluding, farm track access, fencing, firebreaks and public use tracks). • Buildings over 5m² in footprint. • Subdivision. • Forestry. • Removal or destruction of any heritage feature that contributes to the values of the heritage landscape and is referred to in the statement of significance. 	D

HISTORIC HERITAGE 13

Inventory of Protected Features

13.7 Precincts

13.7.1 Queenstown Courthouse Heritage Precinct



13.7.1.1 Statement of Significance

The Precinct represents the historically significant civic centre of Queenstown and contains a number of important heritage buildings, open spaces and structures. Their design and the nature of their stone construction convey their high status within the District. The buildings / structures are an architectural statement of permanency, stability and prosperity as the town evolved progressively from its early canvas tent and timber structures to a new generation of enduring public buildings. The buildings / structures generally remain intact and have a high degree of historical and architectural authenticity within the town. They are very distinctive and prominent features of the townscape in this part of Queenstown and define its provenance. Their scale, form and materials are characteristic of 19th century Queenstown and, together, they are considered to have high 'group' / contextual value in relation to each other. The Stone Bridge is also a rare example of its kind in the District.

HISTORIC HERITAGE 13

13.7.1.2 Key features to be protected

- The individual principal historic buildings; their form, scale, materials and significance. Incremental loss must be avoided.
- The 'group' value of the buildings within the Precinct and their setting within it, including the open spaces.
- The townscape / landmark value of the Precinct, i.e., other buildings, development and signage within the precinct or adjoining it should not adversely affect or diminish the significance of the Heritage Precinct.

13.7.2 Queenstown Mall Heritage Precinct



Blue shapes are the non-contributory buildings.

HISTORIC HERITAGE 13

13.7.2.1 Statement of Significance

The Precinct represents the historically significant commercial centre of Queenstown and still embodies its early settlement pattern from when the town was set out in 1864. This is evident in the arrangement of the sections and the street layout within the precinct. The Precinct contains a wide variance of architectural styles and features of interest is centred on the Mall (Ballarat Street), which since the earliest days of Queenstown has been the principal thoroughfare from the lake through the town. The route of Ballarat Street running up to Hallenstein Street and the frontage of Eichardt's Hotel near the lake provide an historically iconic view of the town from the lake of outstanding townscape and contextual value. The Precinct is considered to have high archaeological value for the evidence that it could provide of the early settlement of Queenstown and its pre-1900 development.

13.7.2.2 Key features to be protected

- The group of reasonably intact 19th century commercial buildings / structures towards the lake end of the Mall and their setting within the Precinct.
- The early settlement pattern of the town (the arrangement of the sections and the street layout within the Precinct). Incremental loss must be avoided.
- The view of the Precinct from the lake – including the straight view up Ballarat Street to Hallenstein and vice-versa.
- The archaeology of the Precinct.

HISTORIC HERITAGE 13

13.7.3 Queenstown Marine Parade Heritage Precinct



Blue shapes are the non-contributory buildings.

13.7.3.1 Summary of significance

The combination of the heritage buildings, the environs of Marine Parade and the shoreline of Lake Wakatipu and the landscape beyond, result in the Heritage Precinct being of unique and exceptional townscape significance. The heritage buildings within the Precinct are representative of the evolution of the early settlement into a permanent and prosperous town. The Masonic Lodge and William's Cottage are thought to be amongst the oldest buildings in the town and create a Precinct of architectural 'gems', which signifies the social and tourist heritage of the town.

13.7.3.2 Key features to be protected

- The individual principal historic buildings; their form scale, materials and significance. Incremental loss must be avoided.
- The unique and exceptional townscape significance of the Precinct.

HISTORIC HERITAGE 13

13.7.4 Arrowtown Town Centre Heritage Precinct



13.7.4.1 Statement of Significance

The precinct represents the commercial centre of the town and includes a nucleus of heritage buildings that have developed on the site of the 1864 relocated town centre. Buildings such as the former BNZ bank premises (associated with the renowned architect, R.A. Lawson) and Pritchard's Store date from the mid -1870s and are symbolic of the development of the town during that economically stable period. The Postmaster's House and Post & Telegraph office have origins in the 20th century and are symbolic of the later progression of the town. The Precinct is held in high esteem by the local community and visitors alike and is a very popular tourist attraction. It contains heritage buildings / structures that are of high aesthetic and architectural significance within the District and wider region as authentic examples or representation of a goldfields' town dating from the 1860s and 1870s. It is considered to have high archaeological value for the evidence that it could provide of pre-1900 commercial Arrowtown dating to the early to mid – 1860s.

13.7.4.2 Key features to be protected

- The unity of the Precinct in terms of scale, form, materials, textures and colours in relation to its mountain and river setting.
- The 'group' value of the Precinct and its representative image of a traditional goldfields town.
- The streetscape, and street and section patterns.
- Views through the Precinct.
- Archaeology.

HISTORIC HERITAGE 13

13.7.5 Arrowtown Cottages Heritage Precinct



Blue shapes are the non-contributory buildings.

13.7.5.1 Statement of Significance

The Precinct represents the historically significant and authentic early years of the settlement and development of Arrowtown from, principally, a social perspective. It contains some of the town's most important buildings and features, including 1870s miners' cottages, the Masonic Lodge, the Green and the tree-lined avenue. The architectural and aesthetic quality of the precinct is derived from its plain, functional, small scale buildings, principally of timber and iron, which represent the typical form of accommodation in which miners and their families lived during the Central Otago Gold Rush years. The larger stone buildings demonstrate progress and permanence as the prosperity and confidence of the town grew. The tree-lined avenue and Green have great aesthetic appeal and provide the setting for the buildings within the precinct. The Precinct has very high townscape / contextual and rarity significance within the District.

13.7.5.2 Key Features to be protected

- The individual principal historic buildings; their form, scale, materials and significance. Incremental loss must be avoided.

HISTORIC HERITAGE 13

- The 'group' value of the buildings within the precinct and their setting within it, including the open spaces.
- The townscape / landmark value of the Precinct i.e., other buildings, development and signage within the Precinct or adjoining it should not adversely affect or diminish the significance of the heritage Precinct.
- Archaeology.

DRAFT

HISTORIC HERITAGE 13

13.7.6 Buildings, structures and features

Ref No	Map Ref	Description	Legal Description (Valuation Reference)	HNZ Cat / No.	QL DC Cat
1	36	St Peter's Anglican Church Organ, St Peter's Church, corner Church and Camp Streets	Lot 1 DP 365052 (2910504403)		3
2	36	St Peter's Anglican Church Carved Eagle Lectern, St Peter's Church, corner Church and Camp Streets	Lot 1 DP 365052 (2910504403)		3
3	37	Antrim Engines Slipway and Cradle, Kelvin Peninsula	Adjacent to Sections 25 and 26, Block I, Coneburn SD (on water's edge) (Adjacent to 2909954900)		2
4	26	Group of Stone Building remains, Whitechapel	Lot 2 DP 15996 Block VIII, Shotover SD (2907210100)		3
5	10	Skippers Road, including stone retaining walls, cuttings at Hell's Gate, Heaven's Gate, Bus Scratch Corner, road to Branches and geographical features Lighthouse Rock, Castle Peak and Long Gully but excluding that part of long Gully legally described as Sections 3, 4 and 5 SO Plan 24648	Road Reserve Commencing at Coronet Peak Road and ending at the end of Branches Road – Blocks II, XV, XVI Shotover SD and Block II Skippers SD.	I / 7684	2
6	10	The Macetown Road and all road stone retaining walls. From Butler Park, Buckingham Street, Arrowtown through to Macetown Historic Reserve.	Road reserve adjacent to Part Section 2 Block XXV Town of Arrowtown and Run 23, 25, 26, 39 and Part Run 27 (Road Reserve adjacent to 2918233400, 2907214600, 2907212500, 2907214700, 2907300200)		3
7	9	The Hillocks, vicinity Dart Bridge	Part Sections 1 & 2, Block IV, Dart SD (2911130400, 2911130500)		3

HISTORIC HERITAGE 13

8	25	Bible Face, Glenorchy. Vicinity Depot and Gravel Pit, Queenstown-Glenorchy Road, Glenorchy. Exact location shown by the building line restriction.	Part Section 2, Block XIX, Town of Glenorchy (2911120100)		3
9	13	Judge and Jury Rocks, rock features only, Vicinity Kawarau Gorge Bridge	Section 4, Block I, Kawarau SD (2907213800)		3
10	9	Peter Tomb's rock, near Diamond Lake	Section 43 Block II Dart SD (2911131800)		3
11	36	Horne Creek, running through Queenstown Town Centre	Runs from Lot 1 DP20875 Block V, Queenstown Village Green through Lot 1 and Lot 2 DP416867, Lot 2 DP 357929, Lot 2 DP 18459 Block XXXI, Road reserve and adjacent to Sections 2 & 3 Block LII adjacent to Sections 2 & 3 Block LII and ending adjacent to Section 1 Block LII. (2910631100, 2910500301, 2910500510, Adjacent to 2910500401, 2910500500 and 2910506500)		2
12	36	Hotop's Rise, Corner Earl and Camp Street	Road Reserve (Camp Street)		2
13	35	Queenstown Gardens and Plantation Reserve Block, 52 Park Street	Section 7 Block LI Town of Queenstown (2910507200)		2
14	12	Copper mine tunnel, Moke Creek	Run 11 Glenorchy Mid Wakatipu (2907305900)		3
15	12	Re-direction tunnel, Moke Creek	Run 11 Glenorchy Mid Wakatipu (2907305900)		3
16	33	Boatshed, Slipway and original Old Ticket Office, Frankton Marina Recreation Reserve	Sections 59 & Part Section 39 Block XXI Shotover SD (2910331100)		2

HISTORIC HERITAGE 13

17	35	Queenstown Cemetery, Brecon Street	Section 132 Block XX Shotover SD (2910614701)		2
18	35	Transit of Venus Site, 8 Melbourne Street, Queenstown	Section 15, Block XXXVI, Town of Queenstown (2910537500)		2
19	10	Cemetery, Skippers	Section 56, Block XI, Skippers Creek SD (2907301000)		3
20	36	Lake Level Plaque, Marine Parade (beside Jetty), Queenstown	Section 6 Block LI Town of Queenstown (2910506600)		3
21	36	Rees Tablet, Waterfront, Marine Parade, Queenstown	Section 6 Block LI Town of Queenstown (2910506600)		3
22	30	Robert Lee's Memorial Trough, Ladies Mile, SH 6	Road reserve adjacent to Lot 2, DP 12921, Shotover SD (Road Reserve Adjacent to 29071402001)		3
23	25	War Memorial, Mull Street, Glenorchy	Section 1560R, Block XII, Town of Glenorchy (Adjacent to 2911101100)		2
24	35	William Rees Memorial, Queenstown Gardens	Part Section 7 Block LI Town of Queenstown (2910507200)		3
25	34	Haki Te Karu Plaque, Queenstown Gardens	Part Section 7 Block LI Town of Queenstown (2910507200)		3
26	34	Scott Rock Memorial, Queenstown Gardens	Part Section 7 Block LI Town of Queenstown (2910507200)		3
27	36	War Memorial Gate, Marine Parade	Road Reserve and Section 6 Block LI Town of Queenstown (Marine Parade) (Road reserve and 2910506600)		2
28	33	1940 Centennial Gates, Queenstown Airport	Lot 2 DP 304345 (2910100106)		3

HISTORIC HERITAGE 13

29	39	Thomas Arthur Monument, Beside Edith Cavell Bridge, Arthurs Point	Road Reserve Crown Land Block XIX Shotover SD (Road Reserve opposite 2910721001)		3
30	25	Centennial Gates, Entrance to Recreation Ground, Corner Mull and Oban Streets, Glenorchy.	Section 1 Block XX Town of Glenorchy (2911118700)		3
31	13	Steam Engine Beside Oxenbridge Tunnel, Arthurs Point	Part Section 148 Crown Land (Shotover River) Block XIX Shotover SD (2907303900)		2
32	33	Frankton Mill Site, Kawarau Road, Frankton	Section 3, Block XVIII, Town of Queenstown (2910121800)		3
33	12	Trig Station, Mount Nicholas Station	Block X, Part Run 630, Mid Wakatipu SD (2911136100)		3
34	9	Invincible Mine, Vicinity Rees River	Part run 752 Earnslaw SD (2907321000)		3
35	39	Edith Cavell Bridge Arthur's Point	Bridge adjoining Crown Land Block XIX Shotover SD being the banks of the Shotover River (Road Reserve opposite 2910721001)	I / 4371	1
36	36	Ballarat Street Bridge, Horne Creek Queenstown Town Centre	Adjacent to Lot 1, DP 20875, Block V and Lot 1 DP 20964, Block XXXI, Town of Queenstown (Road Reserve Adjacent to 2910631100 and 2910500300)	I / 7097	1
37	36	TSS Earnslaw, Berthing located at Steamer Wharf, Beach Street	Adjacent to Section 76 Block XX Shotover SD (Adjacent to 2910642000)		1

HISTORIC HERITAGE 13

38	36	Bridge over Horne Creek - 11 Camp Street	Lot 2 DP 357929 (2910500401)		2
39	36	Lychgate, St Peter's Anglican Church, Corner Camp and Church Street	Lot 1 DP 365052 (29105 04403)		3
40	33	Kawarau Falls Bridge, Frankton	Bridge adjoining Section 4 Block XVIII, Town of Frankton (Adjoining 2910121800)	I / 7448	2
41	13	Kawarau Gorge Suspension Bridge, Vicinity Gibbston	Bridge adjoining Sections 63 and 64, Block I, Kawarau SD. (2907200700)	I / 50	1
42	35	Stone Walled Race, 26 Hallenstein Street Queenstown	Section 12, Block XXXV, Town of Queenstown (2910532900)	II / 5224	3
43	30	Fish Smoker, Lake Hayes	Lot 6 DP 353144 (2907126606)		2
44	35	Stone Walls, Queenstown Cemetery, Brecon Street.	Section 132 Block XX Shotover SD (2910614701)		3
45	10	Skippers Bridge, Shotover River	Adjacent to Shotover Riverbank, Crown Land and Section 148, Block XI, Skippers Creek SD (Bridge adjoining 2907301600)	I / 7684	2
46	9	Scheelite Battery, Glenorchy (Mt Judah)	SECTION 7 SO 369025 (2911125502)		3
47	33	Frankton Cemetery Walls and Gates, Frankton-Ladies Mile Highway	Cemetery Reserve No 1 Frankton Town. On the boundary of Crown Land and Part section 5 Block XXI Shotover SD and Lot 1 DP 11353 (On the boundary of 2910340500, 2910340400 and 2910340600)		2
48	33	Old Frankton Racecourse Stand (Mount Cook Hangar), Lucas Place	Lot 2 DP 304345 (2910100106)		3

HISTORIC HERITAGE 13

49	33	Brunswick Flour Mill, Turbine and Stone buildings by Kawarau Falls Bridge, 22 Bridge Street.	Sections 3 & 4 and Block I Town of Frankton and unformed road. (2910121000 and Road Reserve)		2
50	31	Stone Buildings, Tucker Beach Road	Lot 15 DP 351843 (2907146901)		3
51	25	Railway Shed and Track, Recreation Reserve Benmore Place, Glenorchy	Section 22 Block IV Glenorchy SD (2911124100)		3
52	25	Glenorchy Wharf, Vicinity of Recreation Reserve Benmore Place, Glenorchy	Lake Bed Adjacent to Section 22 Block Glenorchy SD (Adjacent to 2911124100)		3
53	25	Glenorchy Library Building, 15 Argyle Street, Glenorchy	Section 23 Block II Town of Glenorchy (2911113900)		3
54	9	Scheelite mine and associated ruins, sluicing area and compressor. And other shaft entrances, Paradise Trust	Section 39 Block II Dart SD Part Section 148 Block XI Skippers Creek Part Mt Aurum Recreation Reserve (2911131900)		3
55	10	Dam in Skippers Creek	(2907300400)		3
56	36	Hulbert House (Tutuila) 68 Ballarat Street	Sections 4 & 5, Part Sections 3 & 6 Block XX Town of Queenstown (2910615900)	II / 2343	3
57	39	Dwelling, Complex Gorge Road (former Borda's store) 201 Arthur's Point Road	Lot 1, DP 16632, being part of Block XIX, Shotover SD (2907100900)	II / 2238	2
58	35	Stone Building, 17 Brisbane Street, Queenstown	Lot 9 DP 9667 (2910514500)	II / 5225	2
59	36	McNeill Cottage (Mullhollands Stone House), 14 Church Street	Sections 4, SO 14826, Block III, Town of Queenstown (2910505900)	II / 2330	2
60	36	Frederick Daniels House, 47 Hallenstein Street, Queenstown	Lot 2 DP 20343, Block XLVI, Town of Queenstown (2910548000)	II / 2333	2

HISTORIC HERITAGE 13

61	35	Waldmann Cottage "Nil Desperandum", 2 York Street, Queenstown	Lot 4 DP 17970 Town of Queenstown (2910544200)		3
62	39	House and sleep out, Paddy Mathias Place, Arthurs Point Road, Arthurs Point	Section 123 Block XIX, Shotover SD (2910720700)		2
63	35	Cottage, 28 Park Street	Section 17 Block XXXVIII Town of Queenstown (2910512900)		3
64	36	Masonic Lodge Building, (Lake Lodge of Ophir), Corner Marine Parade/Church Street (13 Marine Parade)	Section 6, SO 14826, Block III, Town of Queenstown (2910505800)	I / 2338	1
65	35	Queenstown Bowling Club Pavilion, located within the grounds of the Queenstown Gardens	Part Sections 4-5 & 7 Block LI Queenstown Town (2910507200)		2
66	36	Williams Cottage (Mulhollands Wooden House) 21 Marine Parade	Lot 2 DP 24375 Block III Town of Queenstown (2910505500)	I / 2336	1
67	10	Sainsbury's House, Skippers Mt Aurum Recreational Reserve	Section 148 Block XI Skippers Creek SD, (2907300400)	II / 5176	3
68	36	Glenarm Cottage, 50 Camp Street, Queenstown	Section 1 Block XII Town of Queenstown (2910634200)		2
69	30	Laurel Bank House, 47 Maxs Way, Lower Shotover, Queenstown	Lot 8 DP 325561 (2907464700)		3
70	30	Threepwood and Stone Buildings, Lake Hayes	Lot 21 DP 378242 (2907123716)		2
71	26	Stone Cottage (McAuley), Malaghans Road	Lot 1 DP 27269 Block XVI, Shotover SD (2907111100)		3
72	27	Hanan's House, McDonnell Road	Part Section 19, Block VII, Shotover SD (2907129300)		3
73	36	Thompson House (excluding additions made after 1900), 66 Hallenstein Street	Lot 1 DP 3401 Block XVI Queenstown (2910527300)		3
74	30	McMaster House, Morven Ferry Road	Lot 1 DP 23902 Block VIII Shotover SD (2907132400)		3
75	30	Loose Box (Mt Linton) House, SH 6/Lake Hayes	Lot 1 DP 9052 Shotover SD (2907126200)		2

HISTORIC HERITAGE 13

76	26	Mill House, 549 Speargrass Flat Road (Mill Creek)	Lot 1 DP 12234 Block VII Shotover SD (2907113302)	II / 2241	3
77	26	Oast House, 557 Speargrass Flat Road (Mill Creek)	Lot 1 DP 18523 Block VII Shotover SD (2907113301)	II / 2241	3
78	13	Stone Cottage (Rees), 148 Kingston Road, SH 6, original part only	Pt Section 40 BLK XII Coneburn SD (2909954703)		3
79	13	Tomanovitch Cottage, East of DOC Reserve, Gibbston	Section 40 Block V Kawarau SD (2907204302)	II / 7595	3
80	26	Cottage Whitechapel, (Tomes) (Original Part Only)	Section 126, Block VIII Shotover SD (2907210500)		3
81	9	Arcadia, Paradise, Glenorchy (Original Part Only)	Sections 3 & 4 Lot 13 DP 25326 Block II Dart SD (2911132000)		3
82	35	Long Jacks Cottage, 68 Park Street	Lot 2 DP 312099 (2910517500)		2
83	30	Shaw Cottage, Morven Ferry Road	Lot 2 DP 15559 (2907132100)		3
84	39	172 Arthurs Point (original part only).	Lot 1 DP 11702 being part of Block XIX, Shotover SD and Road Reserve (2910721800)		3
85	36	Boyne Building (Queenstown Supermarket), The Mall, 11 Ballarat Street	Section 20 and 21, SO 14826, Block II, Town of Queenstown (2910503600)	II / 5226	3
86	36	Colonial Bank, The Mall, 5 Ballarat Street	Section 17, SO 14826, Block II, Town of Queenstown (2910503400)		2
87	36	The Queenstown Athenaeum and Town Hall (National Bank), The Mall, 7-9 Ballarat Street	Lot 1, DP 16597 (Previously Part Section 19), Block II, Town of Queenstown (2910503500)		3

HISTORIC HERITAGE 13

88	36	The Queenstown Athenaeum and Town Hall (Winnie Bagoes), The Mall, 7-9 Ballarat Street	Lot 1, DP 16597 (Previously Part Section 19), Block II, Town of Queenstown (2910503500)		3
89	35	New Zealand Forest Service Building (Former), 5 Brisbane Street	Lot 12 DP 9667 (2910514100)	II / 2331	3
90	36	The Cow Restaurant, Cow Lane	Section 16, Block I, Town of Queenstown (2910651200)	II / 5227	2
91	13	Kinross Store and Buildings, Gibbston	Lot 1 DP 24857 Block V, Kawarau SD (2907203903)	II / 7240	3
92	31	Ferry Hotel, Spence Road, Lower Shotover	Part Section 106 Block III Shotover SD (2907122201)		2
93	26	Butel's Flourmill (original foundations and stone wall), Off Butel Road, Millbrook Area	Lot 1 DP 300042 (2918500103)	II / 3206	2
94	13	Roaring Meg Power Station, SH6	Part Riverdale Reserve, Crown land adjacent to Kawarau River Block VI Kawarau SD (2907214500)		3
95	30	Ruins Maynes Hotel, SH6, Lake Hayes Corner	Lot 1 DP352501 (2907126902)		2
96	34	Queenstown Powerhouse, One Mile	Part Sections 110 Block XX Shotover SD (2910654000)		2
97	25	Former Glacier Hotel (Kinloch Lodge) Armadale Street, Kinloch	Section 4 Block XX Town of Kinloch (2911121600)		3 2
98	36	Dominican Convent (Of Our Lady of the Sacred Heart) Corner Beetham and Melbourne Street	Section 7 & 8 part Section 8 Block XXXIV Town of Queenstown SO 14831 (2910529300)		2
99	36	St Peter's Anglican Church, Corner Camp Street and 4 Church Street	Lot 1 DP 365052 (2910504403)	II / 2341	3

HISTORIC HERITAGE 13

100	36	St Peters Parish Hall, 5 Earl Street	Lot 3 DP 365052 (2910504402)	II / 5404	3
101	36	St Peter's Parish Centre (former Vicarage), 1 Earl Street	Lot 2 DP 365052 (2910504404)	II / 2342	3
102	36	St Joseph's Roman Catholic Church, 41 Melbourne Street	Sections 6 SO 14831, Block XXXIV, Town of Queenstown (2910529300)	II / 2340	2
103	25	Church, 13 Argyle Street, Glenorchy	Section 22 Block II Town of Glenorchy (2911114000)		3
104	39	The old McChesney bridge abutment remains, located by the one-way bridge by Arthurs Point Hotel, Arthurs Point	Crown Land Block XIX Shotover SD (2907150900)		2
105	29	Stone Stable, located on the former Littles farm, Littles Road, Wakatipu Basin	Lot9 DP 301885 (2907108804)		3
106	36	Former Lakes County Council Building Corner Ballarat and Stanley Streets (original part only)	Lot 1, DP 21011 (previously Section 10 and 11), Block IV, Town of Queenstown (2910630600)	II / 2337	1
107	36	Courthouse (Former Library and Reading Room and Justice Building), Ballarat Street	Lot 3, DP 20964 and Section 7 Block XXXI, Town of Queenstown (2910500508, 2910500100)	I / 362 / 7655	1
108	36	Coronation Bath House, Marine Parade	Section 6, SO 20747 Block LI, Town of Queenstown (2910506600)	II / 5223	3
109	25	Old School Building, Oban Street, Glenorchy	Block VI Glenorchy Town (2911116000)		2
110	26	Ayrburn Homestead and Stone Farm Buildings	Lot 1 DP 18109 (house) and Part Lot 3 DP 5737 (Dennisons Farm) (2907113200, 2907116606)		2
111	30	Homestead and Stone Stables, Bendemeer Station	Lot 2 DP 366461 (2907127311)		2

HISTORIC HERITAGE 13

112	30	McQuilkin Cottage and Stables (Original Part Only), Bendemeer Bay, Lake Hayes	Lot 1 DP 15921 (2907136301)		3
113	13	Brodie Homestead and Farm Buildings (Glen Russell)	Lots 1 and 2, DP 22393 Block VIII Shotover SD (2907211501)		3
114	38	Closeburn Homestead Queenstown/Glenorchy Road, Closeburn	Lot 1 DP 22593 (2907317901)		3
115	13	Crown Lodge	Lot 1 DP 16512, Lot 1, DP 21358 Block VIII (2907212200)		3
116	13	Kawarau Station Woolshed, SH 6, Gibbston	Lot 20 DP 27121 (2907201600)		3
117	13	Stronsay Farm Buildings, Gibbston	Lot 8 DP 23706 (2907203702)		3
118	26	McEntyre Homestead, Lake Hayes/Arrowtown Road, (Original Part Only)	Lot 1 DP 20834 Block VII Shotover SD (29071 28600)		3
119	33	McBrides Farm Buildings: consisting of Original Smithy, Dairy, Barn and Woolshed, 64 Grant Road, Frankton Flats	Dairy and Woolshed: Lot 9 DP 22121 Block I Shotover SD, Smithy: Lot 11 DP 304345, Barn: Part Section 60, Block I Shotover SD (2910210500, 2910210103, 2910210001)		2
120	30	Bridesdale, Ladies Mile	Lot 3 DP 392823 (2907400508)		3
121	30	Douglas Vale, Ladies Mile	Lot 1 DP 337267 (2907401005)		3
122	30	Glenpanel, Ladies Mile On unnamed road on hill above Ladies Mile	Lot 1 DP 20162 Part Section 83 Block III Shotover SD (2907123600)		3
123	26	Willowbrook Homestead, 760 Malaghans Road	Lot 1 DP 20331 Block VI Shotover SD (2907110800)		3
124	29	Ben Lomond Station Homestead, 101 Malaghans Road	Lot 2 DP 1800 Shotover SD (2907100700)		3
125	29	Cockburn Homestead, 18 Malaghans Road	Lot 1 DP 300530 (2907100502)		3

HISTORIC HERITAGE 13

126	26	Muter Farm Homestead (Roger Monk), McDonnell Road	Part Section 88 Block VII Shotover SD (2918400400)		2
127	30	Stone Barn, 297 Morven Ferry Road	Lot 4 DP 300119 (2907132313)		3
128	30	Stables, Morven Ferry Road	Lot 2 DP 397 602 (2907132313)		3
129	13	Royalburn Station Homestead, off Crown Range Road (Original Part Only)	Lot 2 DP 304567 (2907212003)		3
130	10	Mount Aurum Homestead, Skippers, Mount Aurum Recreational Reserve	Sections 148, Block XI Skippers Creek SD Run 818 Blocks 2-4, 7, 8, 11. Poolnoon SD (2907300400)	II / 5176	2
131	29	Stables, Barn, Smithy, Stone Cottage, Wooden Cottage and Ruins, Thurlby Domain, Speargrass Flat Road	Lot 2 DP 22310 (2907119704)	II / 2240	2
132	13	Seffers Town School House, Moke Creek	Part Block XI, Mid Wakatipu SD		2
133	36	Eureka House facade, 17 Ballarat Street, Queenstown	Sections 23 SO 14826, Block II Town of Queenstown (2910503800)		3
134	36	Forresters Lodge building, Ballarat Street (all external façade)	Lot 1, DP 21011 (previously Section 12), Block IV, Town of Queenstown (2910630600)	II / 2332	2
135	36	Van Der Walde Building - facade The Mall, Ballarat Street (Skyline Arcade)	Lot 2, DP 19416 (previously Part Section 13) Block I, Town of Queenstown (2910651000)		2
136	36	Eichardts Hotel facade, Corner Ballarat Street (The Mall) & Marine Parade, Queenstown	Sections 15 and 16, Block II, Town of Queenstown (2910503201)	II / 7439	2
137	36	Mountaineer Hotel facade, Corner Rees and Beach Street, Queenstown	Lot 2 DP 22252 Block VII, Town of Queenstown (2910645501)		2

HISTORIC HERITAGE 13

138	36	Façade, 3 Rees Street, Queenstown	Part Section 19 and Section 20 Block I, Town of Queenstown (2910651500)		3
139	10	School House at Mt Aurum	Section 148 Block XI Skippers Creek (2907300400)		3
140	10	Bullendale Township - including Eden Hut and Musters Hut	Section 148 Block XI Skippers Creek (2907300400)		2
144	10	Strohle's Hut	Part Run 27 Shotover, Skippers Creek and Soho SD's (2907300200)		3
145	10	Otago Hotel	Section 148 Block XI Skippers Creek (2907301600)		3
216	13	Chard Road	Road Reserve		2
217	10	Macnicol Battery, Aurum Basin	Part Section 148 Block XI Skippers Creek Part Mt Aurum Recreation Reserve (2907300400)		2
218	10	Eureka Battery, Jennings Creek	Part Section 148 Block XI Skippers Creek Part Mt Aurum Recreation Reserve (2907300400)		3
219	10	Nugget Battery below Nugget Terrace	Part Section 148 Block XI Skippers Creek Part Mt Aurum Recreation Reserve (2907300400)		3
220	34	Rifle Butt, Lake Wakatipu foreshore	Lake Wakatipu (approx. 250m south-west from Fernhill Road Roundabout)		3
221	35	Beacon Tripod and Beacon	Part Section 109 Block XX Shotover SD and Lake Wakatipu (2910654000)		2
222	31	Old Shotover Bridge	Joins Crown Land Block II Shotover Survey District and Spence Road		3

HISTORIC HERITAGE 13

223	13	Victoria Bridge Supports, Gibbston Highway	River and Road Reserve		3
224	13	Ryecroft House, 1800 Gibbston Highway	Lot 1 DP 9947 (2907200800)		3
225	13	Perriam's House, Gibbston Back Road	Lot 3 DP 23253 (2907202903)		3
226	9	Paradise House, Paradise Trust, Paradise Road	Section 30 Block II Dart SD (2911131900)		2
227	25	Coll Street Cottage, Coll Street	Lot 1 DP 22743 (2911119101)		3
228	10	Curries Hut, Dynamo Creek	Part Section 148 Block XI Skippers Creek Part Mt Aurum Recreation Reserve (2907300400)		3
229	13	Post Office at Seffertown	Part Run 794 Mid Wakatipu, Shotover, Skippers Creek and Glenorchy SDs (2907303900)		2
230	13	Store at Seffertown	Part Run 794 Mid Wakatipu, Shotover, Skippers Creek and Glenorchy SDs (2907303900)		2
231	13	Library at Seffertown	Part Run 794 Mid Wakatipu, Shotover, Skippers Creek and Glenorchy SDs (2907303900)		2
232	13	Resta Stone Stables, Resta Road/Camp Hill	Glenroy Station		3
233	13	Wentworth Cookshop, 2125 Gibbston Highway	Lot 20 DP 27121 (2907201600)		3
234	13	Remnants of Gibbston Hotel, Dairy, Stables and out buildings. Rapid No. 8, Coal Pit Road	Lot 1 and Lot 3 DP 385701 (2907201802, 2907201803)		3
235	13	Gibbston school teachers house, 2214 Gibbston Highway	Part Section 11 Block V Kawarau SD (2907202000)		2
236	13	Rum Curries Hut, Rafters Road	Section 39 Block V Kawarau SD		1

HISTORIC HERITAGE 13

			(2907204500)		
237	12	Goods shed, Elfin Bay Station, beside wharf	Section 12 SO 12351 (2911135401)		3
238	9	E. Barnetts Hut - Wyuna Station Scheelite Mining Area	Section 14 SO 369025 (2911125502)		3
248	31	Hicks Cottage, Old School Road	Lot 101 DP325561		3
301	28	King Edward VII Memorial Lamp, Corner Wiltshire Street and Berkshire Street, Arrowtown	Road reserve adjacent to Block VI, Town of Arrowtown	II / 2107	3
302	28	Explosive Magazine, Malaghans Road, Arrowtown	Sections 9 Block XIX, Town of Arrowtown (2918235002C)	II / 2108	3
303	28	World War I Field Gun, reserve, Corner Caernarvon and Durham Street	Part Section 5 Block XVIII Town of Arrowtown (2918234800)		2
304	10	Scholes Tunnel, Macetown Road	Run 26 Block XVIII Shotover SD Macetown Road (2907214600)		3
305	28	Cobbled Gutters, Berkshire Street, Arrowtown	Road Reserve	II / 2086	2
308	28	World War I Memorial Reserve, Corner Caenarvon and Durham Street Arrowtown	Part Section 5, Block XVIII Town of Arrowtown (2918234800)	II / 2124	2
309	26	William Fox Memorial, Coopers Terrace, Arrow River, Arrowtown	Run 26 Block XVIII Shotover SD (2907214600)		2
310	28	Stone Wall, Arrow Lane Arrowtown	Fronting Lots 1 and 2, DP9213 and Lot 1 DP17116 Block VI, Town of Arrowtown (2918228100, 2918228200)		3
311	28	Stone Wall, Recreation Reserve, Buckingham Street Arrowtown	Sections 1 and 2, Block XXV, Town of	II / 2120	3

HISTORIC HERITAGE 13

			Arrowtown (2918233400, 2918232600)		
312	28	Ah Wak's Lavatory, 2 Buckingham Street Arrowtown	Lot 4 DP 18410 (2918232900)	II / 2084	2
313	28	Cemetery Wall	Block II Section 10, 12, 13 Town of Arrowtown (2918234900)		3
314	28	Stone wall, old Arrowtown Primary School, Anglesea Street	Section 14 Block IV Town of Arrowtown (2918223202)		2
315	28	Cottage, 9 Anglesea Street Arrowtown	Section 7, Block V, Town of Arrowtown (2918220300)	II / 3167	2
316	28	Cottage, 10 Anglesea Street Arrowtown	Lot 2 DP 342961 (2918223204)	II / 2087	3
317	28	Cottage, 11 Anglesea Street Arrowtown	Lot 2, DP11488 (2918220400)	II / 3166	2
318	28	Cottage, 12 Anglesea Street Arrowtown	North Part Section 10/11, Block IV, Town of Arrowtown (2918223100)	II / 2088	2
319	28	Cottage, 21 Anglesea Street Arrowtown	Part Section 6, Block II, Town of Arrowtown (2918219400)	II / 2089	2
320	28	Cottage, 7 Bedford Street Arrowtown	Lot 1, DP 16248, Block XXIV, Town of Arrowtown (2918216300)	II / 2091	2
321	28	Cottage, 3 Berkshire Street Arrowtown	Lot 1, DP 9213, Block VI, Town of Arrowtown (2918228100)	II / 2122	2
322	28	Cottage, 18 Berkshire Street Arrowtown	Section 3, Block XIII, Town of Arrowtown (2918234400)	II / 2090	2

HISTORIC HERITAGE 13

323	28	Dudley's House Chinese Residence and Butlers House, 4 Buckingham Street Arrowtown	Lot 1, DP 8232, being part Block VII, Town of Arrowtown (2918233000)	II / 2106	2
324	28	Ah Lum's Cottage, Arrowtown Chinese Settlement, Middlesex Street	Lot 3 DP18410 Block VIII Town of Arrowtown (2918232800)	I / 4366	1
325	28	Cottage (O'Callaghan's) 16 Caernarvon Street Arrowtown	Section 3 Block XIV, Town of Arrowtown (2918224500)	II / 2100	2
326	28	Old Fever Ward, 24 Caernarvon Street Arrowtown	Lot 2, DP 10960 (2918224100)	II / 2101	3
327	28	Off Plumb Cottage, 38 Caernarvon Street Arrowtown	Lot 1, DP 12438 (2918222200)	II / 2112	2
328	28	Cottage (Low) 15 Denbigh Street Arrowtown	Lot 1, DP 11234 (2918221200)	II / 2102	2
329	28	McClintock's Cottage, 31 Merioneth Street Arrowtown	Sections 2 Block XX, Town of Arrowtown (2918211800)	II / 2103	2
330	28	Masonic Lodge Building, 9 Wiltshire Street Arrowtown	Lot 1 DP19573, Block I, Town of Arrowtown (2918217800)	I / 2110	2
331	28	Cottage, 11 Wiltshire Street Arrowtown	DP19573 Sections 6 & 7 Block I Town of Arrowtown (29182179000)	II / 3168	2
332	28	Cottage (former Vicarage) 34 Wiltshire Street Arrowtown	Section 20, Block VII, Town of Arrowtown (2918231500)	II / 2105	2
333	28	Reidhaven, 5 Villiers Street Arrowtown	Part Section 10, Block VII, Town of Arrowtown (2918231900)	II / 2116	2
334	28	Cottage, 8 Villiers Street Arrowtown	Part Sections 2 and 3, Block VIII, Town of Arrowtown (2918233200)	II / 2104	2
335	28	Adam's Cottage, 61 Buckingham Street Arrowtown	Part Section 3, Block X Town of Arrowtown (2918217100)	II / 2097	3

HISTORIC HERITAGE 13

336	26	Scheib Cottage (Original Part Only) Arrow Junction	Section 118 Block VIII Shotover SD (2907130800)		3
337	26	Doctor's House, Centennial Avenue	Lot 1 DP 22726 Block XXXIII Town of Arrowtown (2918401200)		3
338	30	Fitzgibbon Cottage, Arrow Junction Road/Morven Ferry Road	Section 82, Block VIII Shotover SD (29071328000)		3
339	28	Cottage, Corner Berkshire and Caernarvon Street, Arrowtown	Section 3 Block IV Town of Arrowtown (2918223500)		3
340	28	Crowie's Cottage, 53 Buckingham Street Arrowtown	Part Section 1 Block X Town of Arrowtown (2918217500)	II / 2093	2
341	27	Wilcox Cottage, Corner Devon and Cornwall Street, Arrowtown	Lot 1 DP 12431 (2918105200)		3
342	28	Luker's Cottage, Feehly Hill, Durham Street	Lot 4 DP 11307 (2918235503)		3
343	28	Forbes Cottage, original part only including chimney, 67 Buckingham Street Arrowtown	Section 2, Block XI Town of Arrowtown (2918215500)		3
344	28	McLaren Cottage, Corner Ford and Bedford Street Arrowtown	Lot 2 DP 9802 (2918203900)		3
345	28	Granny Jone's Cottage 59 Buckingham Street Arrowtown	Part Section 2 & 3 Block X Town of Arrowtown (2918217200)	II / 2096	2
346	28	Gilmour's Cottage original parts only, 5 Hertford Street Arrowtown	Lot 2 DP 19573 (2918218000)		3
347	28	Meg Cottage corner Hertford and Merioneth Street Arrowtown	Section 5 Block XII Town of Arrowtown (2918212200)		3
348	27	Johnston Cottage 51 Devon Street Arrowtown.	Lot 2 DP 16516 (2918105900)		3
349	28	Brodie Cottage 32 Kent Street Arrowtown	Section 6 Block XV Town of Arrowtown (2918222600)		3

HISTORIC HERITAGE 13

350	28	Preston Cottage 30 Kent Street Arrowtown	Section 5 Block XV Town of Arrowtown (2918222700)		3
351	28	Furneaux Smith House, 5 Caernarvon Street Arrowtown	Lot 7 DP 11302 Town of Arrowtown (2918234000)		3
352	27	Currie's Cottage, Manse Road Arrowtown	Lot 2 DP 300024 Town of Arrowtown (2918410800)		3
353	28	Murphy's House, 1 Merioneth Street Arrowtown	Lot 2 DP 25997 Block XI Town of Arrowtown (2918215800)		3
354	28	Cottage (Fitzpatrick) 27 Merioneth Street Arrowtown	Section 2 Block XX Town of Arrowtown (2918211800)		3
355	28	Policeman's House 70 Buckingham Street, Arrowtown	Lot 19 DP 9914 Block VI (2918214300)		3
356	28	Pittaway's Cottage, 69 Buckingham Street Arrowtown	Section 3 Block XI Town of Arrowtown (2918215600)	II / 2099	3
357	28	Roman's Cottage 65 Buckingham Street, Arrowtown	Lot 1 DP 12521 (2918217000)	II / 2098	2
358	28	Stevenson's Cottage 55 Buckingham Street, Arrowtown	Part Sections 1 & 2 Block X Town of Arrowtown (2918217400)	II / 2094	2
359	28	Cottage, 28 Wiltshire Street Arrowtown	Part Section 1 Block VII Town of Arrowtown (2918231200)		2
360	28	Summers Cottage 16 Wiltshire Street, Arrowtown	Lot 1 DP 23743 Town of Arrowtown (2918227801)		2
361	28	Summers Cottage, 12 Stafford Street Arrowtown	Lot 2 DP 16665 Block XVI Town of Arrowtown (2918226200)		2
362	28	Postmaster's House, 54 Buckingham Street, Arrowtown ⁵	Lot 2 DP 21884 Block VI (2918228801)	II / 2113	2

⁵ See Heritage Protection Order Number 1

HISTORIC HERITAGE 13

363	26	Walnut Cottage, 265 Arrowtown-Lake Hayes Road, original building only	Lot 1 DP 5746 (2907114002)		3
365	28	Reid's Stables, 40 Wiltshire Street, Arrowtown	Lot 9 DP 1923 (2918231800)	II / 2115	2
366	27	Presbyterian Manse, 51 Manse Road Arrowtown	Lots 1 DP 342248 (2918410007)		2
367	28	St John's Church, 26 Berkshire Street Arrowtown	Section 1, Block XVIII, Town of Arrowtown (2918234700)	II / 2119	2
368	28	St Paul's Anglican Church, 13-15 Berkshire Street, Arrowtown	Section 1 & 2, Block IV, Town of Arrowtown (2918223400)	II / 2121	2
369	28	Anglican Vestry Building, 15 Berkshire Street, Arrowtown	Sections 1 & 2, Block IV, Town of Arrowtown (2918234700)	II / 2123	3
370	28	St Patrick's Church (Roman Catholic) & Blessed Mary MacKillop Cottage 7 Hertford Street Arrowtown	2918218100	II / 2117	2
372	28	Arrowtown Borough Council Buildings, 57 Buckingham Street Arrowtown	Lot 1 DP 26376 Block X, Town of Arrowtown (2918217300)	II / 2095	1
373	28	Post Office, 52 Buckingham Street, Arrowtown ⁶	Lot 1 DP 21884 Block VI Arrowtown (2918228800)	II / 2114	2
374	28	Jail and Reserve (0.0545ha), 8 Cardigan Street Arrowtown	Lot 7, DP 9914, being Part Section 15, Town of Arrowtown (2918213600)	I / 350	1
375	27	Police Camp Building Butler Park, Arrowtown	Part Section 2 Block XXV Town of Arrowtown (2918233400)		2
378	28	Arrowtown General Store, 18-20 Buckingham Street, Arrowtown	Lot 1 DP 27544 (2918229800)	I / 4370	2

⁶ See Heritage protection Order Number 1

HISTORIC HERITAGE 13

379	28	Stable Block (The Stables Restaurant), 28 Buckingham Street, Arrowtown	Lot 1 DP 12884 (2918229600)	II / 2118	2
380	28	Stone Cottage, 51 Buckingham Street Arrowtown	Part 1 Section 1, Block X, Town of Arrowtown (2918217600)	II / 2092	2
381	28	B.N.Z Agency Building, 30 Buckingham Street, Arrowtown	Lot 2 DP 12884 (2918229500)	II / 2085	2
382	28	Lakes District Museum (former Bank), 47 Buckingham Street, Arrowtown	Sections 1-3 Block IX Arrowtown (2918230900)	II / 2111	2
385	10	Macetown Ruins and Reserve, Vicinity Macetown	Land on SO's 14538, 18539 and 18612. Section 1, Block XIV, Shotover SD, SO18612, Sections 1-6, Block I, Sections 104, Block II; Sections 1-10 Block III, Sections 1-6 Block V; Sections 1-6 Block VI; Sections 2 & 5 Block VII; Sections 1-15 Block VIII; Sections 1-4 Block IX; Sections 1-10 Block X; sections 1-10 Block XI; Sections 1-9 Block XII; and Sections 1-9 Block XIII; Mining Reserve adjoining Block II, III, IV, IX, X & XII and adjacent to Block I & VII and Crown Land adjoining Blocks V, VI, VII, VIII, IX & XIII and adjacent to Block 1; Town of Macetown. As in all document no's 489403 and 149467. SO Plan 14537; SO Plan 14538; SO Plan 18539 and 18612.		3

HISTORIC HERITAGE 13

387	10	Britannia Terrace, Macetown Road	Block XVIII Shotover SD, Lot 1 DP 12267; Lots 1 & 2 DP 12940; Lots 1-4 DP 15443; Sections 3-5 Block VI Town of Arrowtown; Lots 1 & 2 DP 21884, Sections 14-15 Block IX Town of Arrowtown; Lot I DP 27170, Lot 1 DP 21701; Town of Arrowtown and the legal road to which all these properties front, Sections 1-9 Block IX (2907214600, 2918229600, 2918229500, 2918229400, 2918229300, 2918229200, 2918229100, 2918229000, 2918228902, 2918228800, 2918228801, 2918230300, 2918230400, 2918230500, 2918230600, 2918230700, 2918230800, 2918230900		3
400	39	Stone seat, Kingston foreshore	Section 1 Block XX Kingston Town (2913106700)		3
401	39	Square stone culvert, under railway yards.	Road Reserve - Kent Street		3
402	39	Stone cairn, site of the launching of the Earnslaw	Road Reserve - Kent Street		3
403	39	Rock retaining wall, wharf approach, Kingston	Lake Wakatipu		3
404	39	Wharf, Kingston	Lake Wakatipu		3

HISTORIC HERITAGE 13

405	39	Old School Building (current library), 48 Kent Street	Lot 1 Section 15 Block 1 Kingston (2913126700)		3
410	39	Ships Inn, 24 Cornwall Street	Section 16 Block X Town of Kingston (2913114300)		3
506	20	Wilkin Memorial 2 Mclellan Place, Albert Town	Lot 23 DP 24481 Block IV Lower Wanaka SD (2908326330)		2
507	21	Soldiers Monument Chalmers Street Lookout QLDC Local Purpose Reserve Wanaka	Lot 1 DP 4961 Wanaka Memorial Reserve (2905309900)		2
508	24	Early Graves and Pioneer Memorial Albert Town Cemetery Reserve, Lake Hawea -Albert Town Road	Section 20, Block V Lower Wanaka SD (2908201200)		2
509	24	James Horn Plaque, Albert Town Bridge over the Clutha River (Albert Town side of the river, upstream side of the bridge), Albert Town, Lake Hawea Road	Road Reserve adjacent to Section 1 SO 24606 (Adjacent to 2908330323)		2
510	10	Studholme Nursery Plaque, Vicinity of the site of early Cardrona nursery, Cardrona Road, Cardrona Valley	Road Reserve adjacent to P254 part Run 505C Cardrona SD (Adjacent to 2906119900)		2
511	7	Scaife Plaque, Mount Roy	Part Section 1 SO 22998 (2906122801)		2
512	18	Stone Ruin (Landreth property) 342 Kane Road, Hawea Flat	Section 51 Block VII Lower Hawea SD (2908211300)		3
513	22	Homestead Foundation QLDC Recreation Reserve Norman Terrace to Mt Aspiring Road	Lot 1 DP 16152 Lower Wanaka SD (2905401400)		2
514	18	Cabaret Building Foundations, Ruby Island	Ruby Island Lower Wanaka SD (2906122700)		3
515	8	Luggate Red Bridge, Rural Luggate	Road and River Reserve		3

HISTORIC HERITAGE 13

520	24	Old Stone Cottage 100-120 Alison Avenue Albert Town	Lot 39 DP 7458 Albert Town Extn No 3 (2908330500)		3
521	23	Glebe House, 133 Stone Street, original house only	Lot 2 DP 24047 (2905371000)		2
522	18	Halliday Homestead, 85 Halliday Road	Lot 2 DP 340274 (2906304710)		3
523	8	Drake Family Stone House, Hawea Back Road	Section 34 Block I Lower Hawea SD (2908207200)		3
524	11	Stone Cottage and Stables next to Luggate Hotel, 60 Main Road, Luggate	Lot 1 DP 15124 Block VI Tarras SD (2908300900)		2
525	18	Pearce Clay stone hut, 590 Mount Barker Road	Part Lot 1 DP 17508 Block I Lower Wanaka SD (2906109502)		3
526	18	Cob House and Stone Shed, 107 Maxwell Road	Lot 2 DP 23129 Block I Lower Wanaka SD (2906109500)		3
527	8	Old John Cottage – (F Urquhart Property) Corner Gladstone Road and Hawea Back Road, Hawea	Part Section 52 Block I, Lower Hawea SD (2908204500)		3
528	18	“Blairnhall” 115 Hawea Back Road (Private Dwelling)	Lot 1 DP 9204 Block V Lower Hawea SD (2908207800)		3
529	18	Sod Cottage, 25 Loach Road, Hawea Flat	Section 88 Block XII Lower Hawea SD (2908215500)		3
530	18	McClennan’s Cottage, 64 McClennan Road Hawea Flat	Lot 2 DP 343710 (2908214101)		3
531	8	Cob Cottage, 324 Luggate-Tarras Road, Hawea Flat	Part Section 3 Block VII Tarras SD (2908211800)		2
532	8	McPherson House, Hawea-Albert Town Road			3
534	21	St Columba Anglican Church Corner MacDougall/Upton Street Wanaka	Section 4 & 5 Block XXI Wanaka Town (2905338100)	II / 7465	3

HISTORIC HERITAGE 13

535	18	Former St Patricks Catholic Church 65 Newcastle Road, Hawea Flat	Lot 1 DP 337991 (2908212605)		3
536	18	St Ninians Presbyterian Church, Kane Road, Hawea Flat	Part Section 11 Block V Lower Hawea SD (2908217800)		3
538	21	Old Jail Buildings – timber cell and stone building 2 Dunmore Street Wanaka	Lot 3 DP 27690 (2905307103)		2
539	11	Luggate School Plaque Kingan Road Luggate	Part Section 5 Block VI Tarras SD (2908301200)		2
540	18	Old Post Office Building, Camp Hill Road, Hawea Flat	Part Section 11 Block V Lower Hawea SD - Hawea Flat (2908217500)		3
541	18	Hawea Flat School building, located on the north-eastern corner of the school site, corner of Camphill Road and Kane Road, Hawea Flat	Part Section 11 Block V Lower Hawea SD (2908217700)		3
542	24	Blacksmith Shop (Part of Templeton Garage) 21 Wicklow Terrace, Albert Town	Lot 1 DP 19201 Section 4 Block XI Albert Town (2908333300)		3
543	24	Cardrona Hotel Facade, Crown Range Road Cardrona	Part of Sections 4, 9-10 Block VII Cardrona Town (2906123800)	II	1
544	11	Old Flour Mill 114 & 126 Main Road SH 6 Luggate	Part Section 1, Block VI, Tarras SD (2908309100)	II / 3242	2
545	11	Hotel Stonework Facade, 60 Main Road/SH 6, Luggate	Lot 1 DP 15124 Block VI Tarras Surrey District (2908300900)		3
546	21	Wanaka Store Façade, 70 Ardmore Street	Lot 2 DP 17535 (2905202400)		2
549	18	Stone Homestead McCarthy Road Hawea Flat	Section 41 Block I, Lower Hawea SD (2908207300)		3
550	22	Woolshed Studholme Road, Wanaka	(2905373922)		3

HISTORIC HERITAGE 13

552	24	Cardrona Hall and Church, Cardrona Valley Road	Section 10 Block I Cardrona SD (2906125700)		1
xxx	39	Kingston Flyer Railway, including: Railway turntable, water tank and crane. The railway line from Kingston to Fairlight (up to the QLDC District boundary) Kingston Railway Station. Water weir	Lots 1 & 6 DP 306647 Lot 2 Part Lot 1 DP 318661; Block I, V, XII Kingston SD; Sections 1-3, 5, 7-10, 12-15, 20, 23 & 24 Block VI Town of Kingston; Section 2, 4, 6-8, 10, 11, 25, Part Section 3, 5, 9 Section 1; SO7617; Section 1-3 SO10898 SO 10760; Run 593. Lot 2 Part Lot 1 DP 318661; Lot 1 DP 306648; Block I, V, XII Kingston SD; Sections 1-3, 5, 7-10, 12-15, 20, 23 & 24 Block VI Town of Kingston; Section 2, 4, 6-8, 10, 11, 25, Part Section 3, 5, 9 Section 1; SO7617; Section 1-3 SO10898 SO 10760; Run 593; Lot 9DP 306647; Lot 4DP 318631 Section 1 Block X Part Section 8 Block I Kingston SD Scenic Reserve Balance at 29280-43500 (2913104205 2913102800, 2913104205, 2913109901, 2913104206, 2913104209, 2913104210,2913101 801,2913102800)		2
xxx		Kinloch jetty and wharf building	Sec 4, Blk XX Town of Kinloch (associated with Kinloch Lodge)		2

HISTORIC HERITAGE 13

			(2911121600)		
xxx		Millers Flat Church, Roman's Lane, Arrowtown	Part Section 3 Block x Town of Arrowtown (2918217100)		3
xxx		Former Methodist Church, 8 Berkshire Street, Arrowtown	Pt Secs 1&2 BLK VII Arrowtown (2918231100)		3
xxx		Marshall Cottage, Strains Road, Threepwood, Lake Hayes	Lot 2 DP 21614 (2907123753)		3
xxx		Shanahan's Cottage, Arrowtown Golf Course	Sec 3, Blk XXXII Tn of Arrowtown (2918400500)		3
xxx		Old Butchery, Tuohy's Gully, Cardrona	Part Section 3 Block I Cardrona SD		2
xxx		Stone Cottage, 253 Centennial Avenue, Arrowtown (Limited curtilage)	Section 5 SO 445725 (2907130002)		2
xxx		Kawarau Falls Dairy and Meat Store	Lot 4 DP 385775		2
xxx		Threepwood Stables	Lot 2 DP 21614		2

HISTORIC HERITAGE 13

13.7.7 Archaeological sites

Ref No	Map Ref	Description	Legal Description	Valuation Reference	NZHPT Category
700	9	Maori Ti Pits and paved area. Between Dart Bridge and Kowhai Creek true right bank of Dart River below road	Section 14 Block I, Dart SD and Crown Land next to Dart River <u>Section 3 SO24940</u>	2911133000 <u>2911133401</u>	II / 5600
701	10	Dynamo	Mt Aurum Historic Reserve, Run 753 Block XI, Skippers SD	2907300400	II / 5601
702	10	All Settlement and gold mining relics	Mt Aurum Recreation Reserve, Run 753 Block XI Skippers SD	2907300400	II / 5602
703	9	Battery, Rees River Vicinity	Invincible Mine Historic Reserve (Doc) Part Run 752 Earnslaw SD	2907321000	II / 5603
704	9	Buddle, Rees River Vicinity	Invincible Mine Historic Reserve (Doc) Part Run 752, Earnslaw SD	2907321000	II / 5604
705	9	Sawmill Settlements Turners Creek - Kinloch Road Mill Creek	Crown Land Block VI Upper Wakatipu	Adjacent to 2911134301	II / 5605

HISTORIC HERITAGE 13

706	10	Suspended Pipe Syphon in Stoney Creek	Mt Aurum Historic Reserve Run 753 Block XI Skippers SD	2907300400	II / 5606
707	13	Mining Tunnel Oxenbridge Tunnel	Crown Land (Shotover River) Part Section 148 Block XIX Shotover SD	2907303900	II / 5607
708	38	Lime Kilns and Manager's residence Bobs Cove	Recreation Reserve, Block V and Part Section 39, Mid Wakatipu SD	2907306700, 2907305600	II / 5608
709	38	Gold Mining - All relics in Twelve Mile Creek	Part run 707 Block IV Mid Wakatipu SD	29073 05800	II / 5609
710	27	Arrowtown Chinese Settlement	Lot 3 DP 18410, Arrowtown Historic Reserve, Lot 4 DP 18410, Block VIII Arrowtown SD and Lot 1 DP 8232	2918232800, 2918232900, 2918233000	II / 5613
711	30	Morven Ferry Moa Hunters Site Old pitched rock (paved) road	Section 1 SO 21432		II
712	39	Dunlea Farmstead site, NZAA site F42/231	Lot 1 DP 12725	2913102600	
713	39	Old Kingston School, NZAA site F42/230	Section 1 Blk XVI TN OF Kingston	2913110500	

HISTORIC HERITAGE 13

xxx		Old house site, Kingston	Oxford Street, Kingston	2913127000	
-----	--	-----------------------------	----------------------------	------------	--

DRAFT

HISTORIC HERITAGE 13

13.8.1 Sites of Significance to Maori

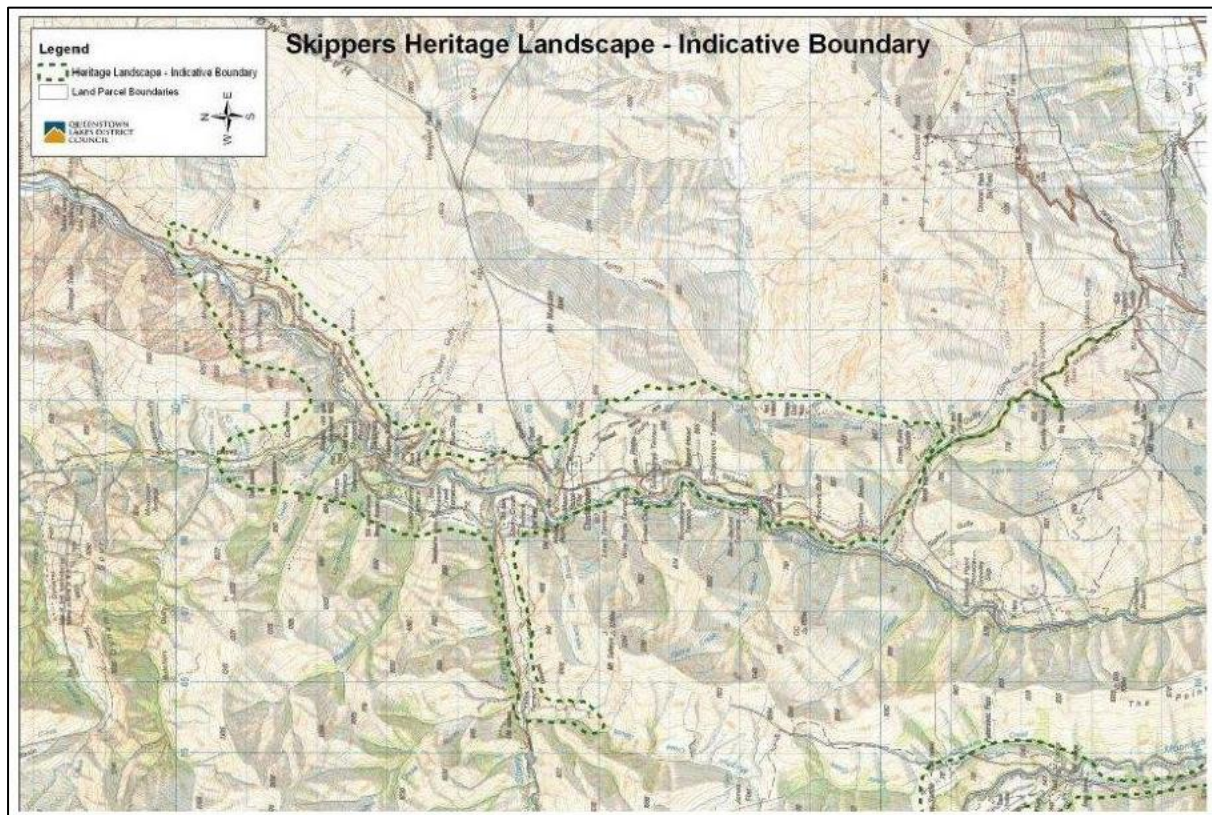
(To be confirmed)

DRAFT

HISTORIC HERITAGE 13

13.8.2 Heritage Landscapes

13.8.2.1 Skippers Heritage Landscape



13.8.2.2 Statement of Significance

The Skippers Heritage Landscape (SHL) represents some of the most historically and archaeologically significant 19th century gold mining sites in Otago and Southern New Zealand. Together, the diverse gold mining sites and features form an historically rich landscape that embodies the 1860s gold mining efforts and challenges of early miners, as well as later, more sophisticated mining technology that was needed to access the more difficult deposits of gold. In combination with the remote and stunning natural landscape of the Shotover River valley, the SHL offers a unique, largely intact, and publicly accessible historic gold mining experience for visitors to the Shotover River. Within the SHL, the precipitous later 19th century Skippers Road (1883 to 1890), the deserted Skipper's Township (1862) and the 1901 Skippers Suspension Bridge are all highly significant heritage sites that have been recognised by their Heritage New Zealand listings. In addition, over 130 archaeological sites within the SHL are entered on the New Zealand Archaeological Association Site Recording Scheme, demonstrating the outstanding heritage significance of the Skippers Heritage landscape.

HISTORIC HERITAGE 13

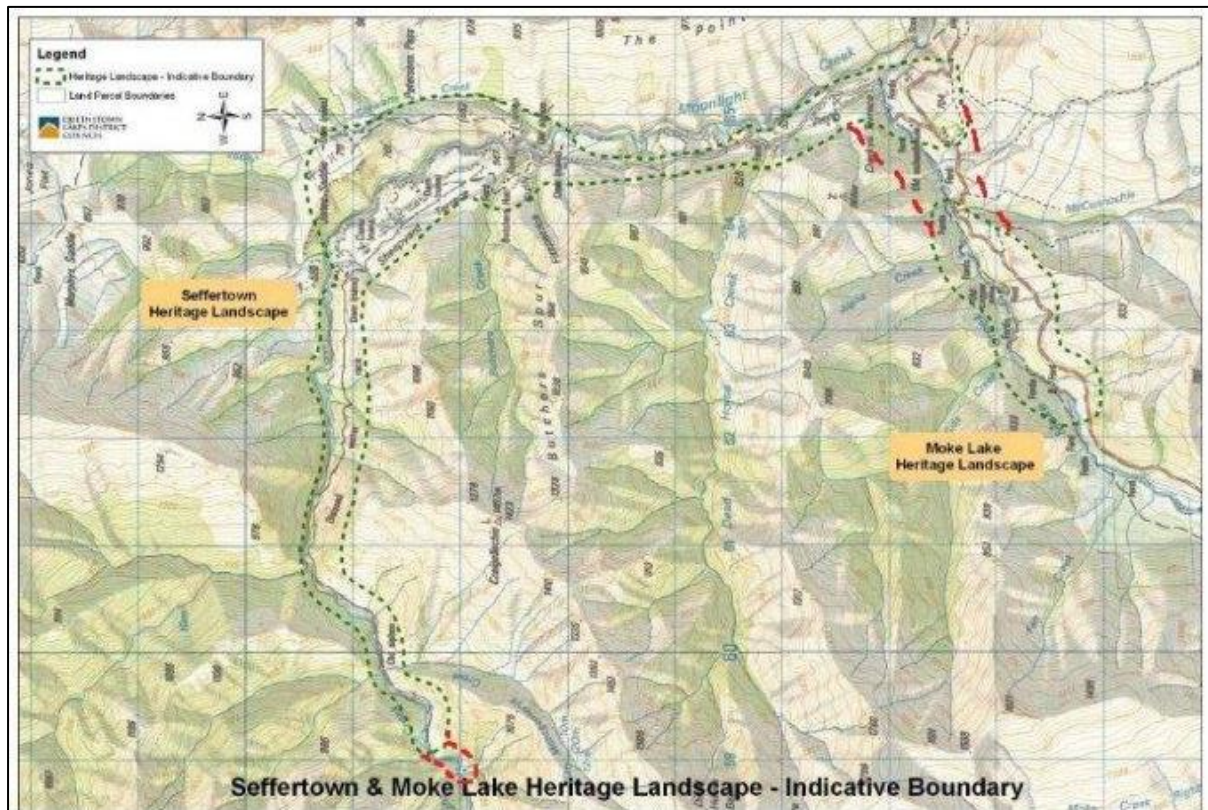
13.8.2.3 Key Features to be protected

- The Skippers Road and its historic revetments and construction features.
- The Skippers suspension bridge and former town ship area.
- All other known archaeological sites, including sluiced terraces.
- Unobstructed views along the Skippers canyon section of the Shotover River.

DRAFT

HISTORIC HERITAGE 13

13.8.2.4 Moke Lake and Sefferton Heritage Landscape



13.8.2.5 Statement of Significance

The Sefferton and Moke Lake Heritage Landscapes (SMLHL) are significant for their concentrations of historic gold and copper mining remains, which include both mining infrastructure and settlement sites. The extensive and well preserved complex of features along Moonlight Creek and Moke Creek are an important part of the wider history of the Wakatipu gold rush, linking closely with the Shotover River, Arrow River and Macetown / Rich Burn goldfields. Sefferton / Moke Creek was the site, albeit short lived, of an early tented gold rush township that settled into a remote, mountain community that survived into the 1950's. Its remains provide tangible reminders of the many local stories that survive of the mining community and their hardships and life in the mountain goldfields of Otago.

13.8.2.6 Key Features to be protected

- The former mining settlement remains at Moke Creek / Sefferton including the surviving cottages, huts, gardens and plantings.
- The copper mining site along Moke Lake Road.
- Moke Lake Road and the historic track to Butchers Hut along the true right bank of the Moonlight Creek.

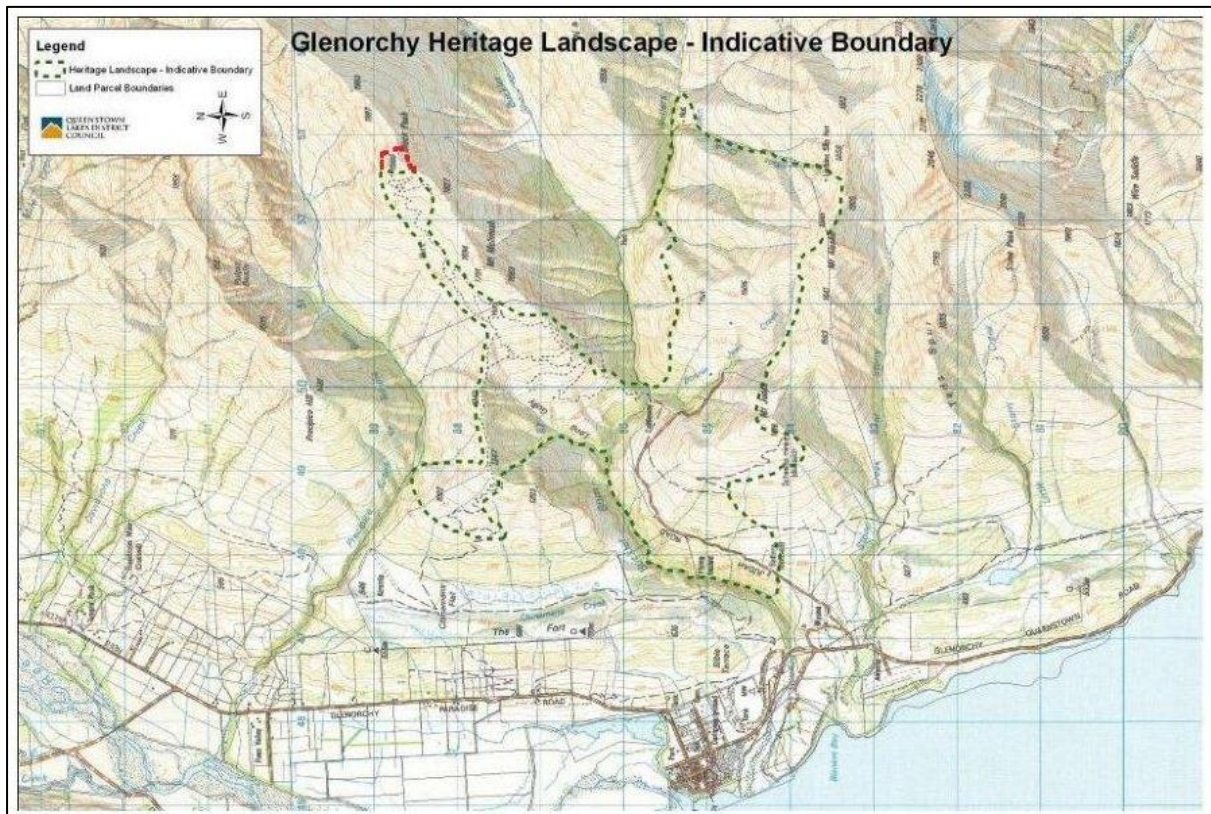
HISTORIC HERITAGE 13

- The extensive stone and earthwork mining remains centred on Sheeppark Terrace and the Moonlight Creek.
- The 8.8km water race leading from above Montgomery's Creek to the Sheeppark Terrace area and below.
- All other known archaeological sites and listed historic places within the SMLHL.

DRAFT

HISTORIC HERITAGE 13

13.8.2.7 Glenorchy



13.8.2.8 Summary of significance

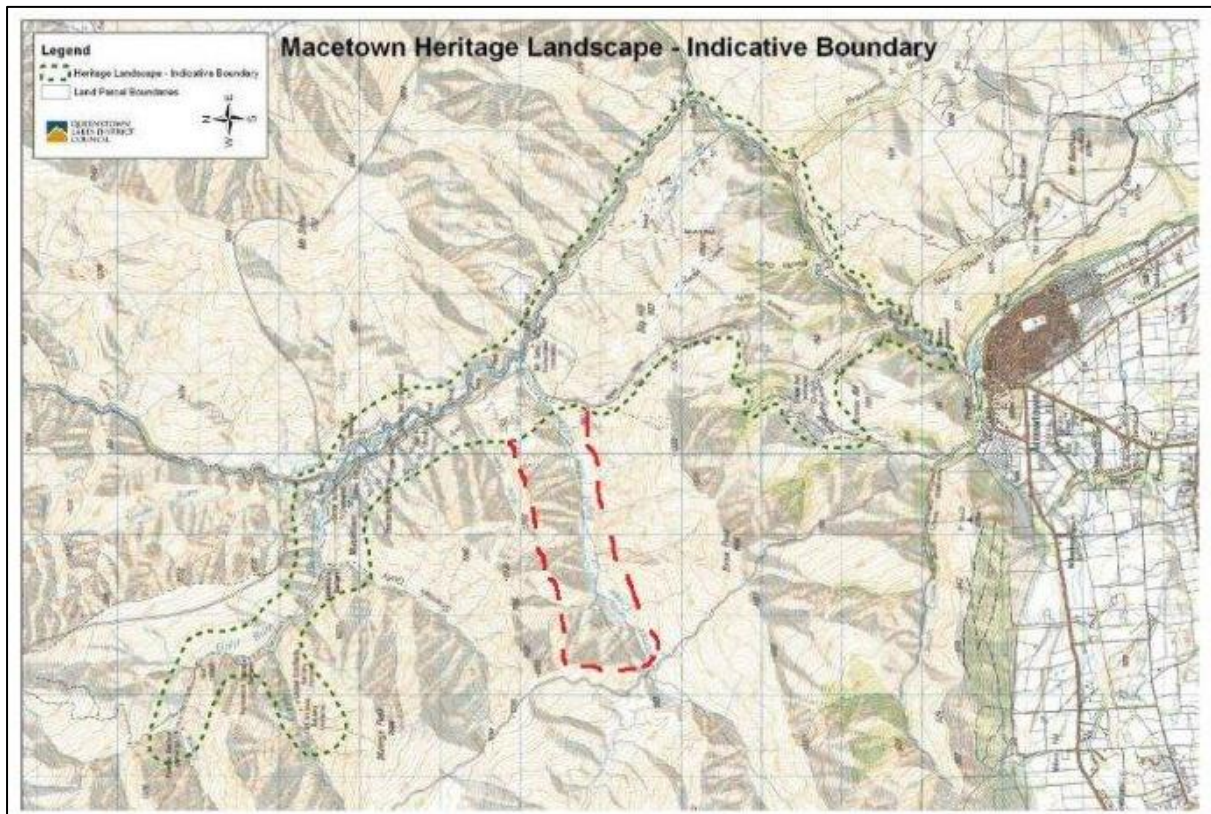
The Glenorchy Heritage Landscape (GHL) is significant for its specific scheelite mining activities that extended from the 1880's until the 1980's, which have left a significant group of mine sites and infrastructure, along with a unique social history of the people who worked there. They in turn, represent the hard won and sometimes fruitless endeavours of a close knit community of miners that spanned a hundred years of mining at Glenorchy. The GHL encompasses the majority of the key mine sites, tracks, a cableway and sections of water races that represented the primary scheelite producing area in New Zealand. The combination of private and state-owned mines is also a unique part of the GHL's history in the ubiquitous and contemporary gold mining industry of the Wakatipu Basin. Overall, the scheelite mining history symbolised by the GHL is a unique one of national heritage significance.

13.8.2.9 Key features to be protected

- All mines, mining huts, the cableway and track ways within the GHL boundary (including the Black Peak Mine).
- The mine sites along the Mount Judah Road.
- All other known archaeological sites and historic places within the GHL.

HISTORIC HERITAGE 13

13.8.2.10 Macetown



13.8.2.11 Summary of significance

Although it covers a large area, the Macetown Heritage Landscape (MHL) is significant for its concentration of historic gold mining sites, focussed on the deserted mining town of Macetown, which span from the earliest exploitation of gold in the Arrowtown area in 1862, through to the end of gold mining in the 1930's. Such a continuum of mining activity – first alluvial then hard-rock or quartz – has left a distinct and intelligible landscape with diverse features and stories linked by a series of mining tracks that still allow access to this remote and stunning countryside. The MHL encompasses three key areas; the Rich Burn Valley, Macetown and the Arrow River valley, all three of which have distinctive characters and features that coalesce to form a broader mining heritage landscape of regional significance. Among these, Macetown is highly significant, representing the surviving remains of a remote 19th century mining village to which stories are still attached and some history has been traced to its founders, occupants and demise. Situated within its larger mining heritage landscape context, Macetown can be interpreted as part of a community of gold mining activity sites, which are a key part of the wider Otago gold mining story.

13.8.2.12 Key features to be protected

- The (Department of Conservation) Macetown Historic Reserve area including the Macetown Road.

HISTORIC HERITAGE 13

- The Rich Burn mining remains (e.g., Anderson's Battery and the Homeward Bound Battery; the Sunrise Mine Office).
- The historic mining tracks of Hayes Creek, Sawpit Gully and Advance Peak and similar tracks within the MHL.
- All other known archaeological sites and listed historic places within the MHL.

13.8.3 Heritage Orders

No	Map Ref	Related Protected Features	Purpose	Heritage Protection Authority	Site and Legal Description
1	28	See 362 and 373	To protect and preserve the buildings known as the Postmaster's House and the Arrowtown Post Office and their associated buildings and their surrounding land (refer to site files for complete description of heritage order).	Queenstown Lakes District Council	52 and 54 Buckingham Street Lots 1 and 2, DP 21884, Block VI, Town of Arrowtown (Valuation reference 2918228800 and 2918228801)
2	36		To protect the building known as Archer cottage and the historic relationship created by buildings on Marine Parade, the space between these buildings and the relationship between these buildings and the public space onto which they front (refer to site files for complete description of heritage order).	Queenstown Lakes District Council	Lot 15 DP 302022