

QUEENSTOWN LAKES DISTRICT COUNCIL

APPROVED PLAN:
SH160140

Monday, 3 April 2017

PLANTING PLAN - SOUTHERN AREA



1: 2,500 @ A3



NOTES

CONTRACTORS TO VERIFY ALL DIMENSIONS ON SITE PRIOR TO COMMENCING WORK;
CONTRACTORS ARE RESPONSIBLE FOR CONFIRMING THE LOCATION OF ALL UNDERGROUND SERVICES ON SITE PRIOR TO COMMENCING WORK;
FIGURED DIMENSIONS TO BE TAKEN IN PREFERENCE TO SCALED DIMENSIONS.

KEY

REV DATE DESCRIPTION

CLIENT SANDERSON GROUP
CONSULTANTS

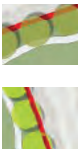
For Resource Consent

QUEENSTOWN COUNTRY CLUB

PLANTING PLAN - SOUTHERN AREA

Design KCh	Scale NTS	Date 2017.03.22
Drawn SCa		
Check JRc		
App'd JRc		
DRAWING NO. C16005A_241	REVISION 4	

PLANT LIST



Ladies Mile & Howards Drive Trees

Botanical Name	Common Name
<i>Aesculus hippocastanum</i>	Horse Chestnut
<i>Fagus sylvatica</i>	English Beech
<i>Fraxinus excelsior</i>	Ash
<i>Juglans regia</i>	Common walnut
<i>Liquidamber styraciflua</i>	Liquidamber
<i>Platanus orientalis</i>	Oriental Plane
<i>Quercus cerris</i>	Turkey Oak
<i>Quercus dentata</i>	Japanese Oak
<i>Quercus palustris</i>	Pin Oak
<i>Quercus robur</i>	English Oak
<i>Quercus rubra 'Maxima'</i>	Red Oak
<i>Tilia cordata</i>	Small-leaved Lime
<i>Tilia x europaea</i>	European Lime
<i>Tilia tomentosa 'Obicularis'</i>	Silver Lime
<i>Ulmus parvifolia</i>	Chinese Elm
<i>Ulmus procera</i>	Green English Elm



Orchard Trees

Botanical Name	Common Name
Magnolia 'Little Gem'	Evergreen Magnolia
<i>Prunus avium 'pendula'</i>	Flowering Plum
<i>Prunus 'Awanui'</i>	Sweet Cherry
<i>Prunus 'Thunder Cloud'</i>	Flowering Cherry
<i>Malus x domestica</i>	Apple
<i>Prunus armeniaca</i>	Apricot
<i>Prunus avium</i>	Cherry
<i>Pyrus communis</i>	Pear
<i>Prunus domestica</i>	Plum



Boulevard Trees

Botanical Name	Common Name
<i>Carpinus betulinus 'Fastigiata'</i>	Upright Hornbeam
Magnolia 'Little Gem'	Evergreen Magnolia
<i>Prunus avium 'pendula'</i>	Flowering Cherry
<i>Prunus 'Awanui'</i>	Flowering Plum
<i>Prunus 'Thunder Cloud'</i>	Sweet Cherry



Amenity Trees

Botanical Name	Common Name
<i>Acer davidii</i>	Snakebark Maple
<i>Acer rubrum</i>	Maple
<i>Acer saccharinum</i>	Maple
<i>Acer spp. weeping</i>	Maple
<i>Amelanchier canadensis</i>	Service Berry
<i>Betula utilis Jacquemontii</i>	Himalayan Birch
<i>Cedrus deodara</i>	Deodar cedar
<i>Cercis canadensis</i>	Forest pansy
<i>Cornus 'Eddies 'White Wonder'</i>	Dogwood
<i>Gleditsia 'Ruby Lace'</i>	Honey locust
<i>Liquidamber styraciflua</i>	Liquidamber
<i>Magnolia 'Little Gem'</i>	Evergreen Magnolia
<i>Magnolia stellata</i>	Star Magnolia
<i>Malus Golden Hornet</i>	Crabapple
<i>Malus trilobata</i>	Lebonese Wild Apple
<i>Parrotia persica</i>	Persian Ironwood
<i>Prunus avium 'pendula'</i>	Sweet Cherry
<i>Prunus 'Awanui'</i>	Flowering Cherry
<i>Prunus 'Kanzan'</i>	Flowering Cherry
<i>Prunus nigra</i>	Canada Plum
<i>Prunus 'Thunder Cloud'</i>	Flowering Plum
<i>Prunus Shimidsu Sakura</i>	Flowering Cherry
<i>Prunus Shirotae</i>	Flowering Cherry
<i>Prunus subhirtella</i>	Flowering Cherry
<i>Prunus spp. weeping</i>	Flowering Cherry
<i>Prunus Ukon</i>	Flowering Cherry
<i>Prunus yedeonsis 'Awanui'</i>	Flowering Cherry
<i>Robinia pseudoacacia</i>	Robinia
<i>Thuja occidentalis 'Smaragd'</i>	Thuja



Carpark Trees

Botanical Name	Common Name
<i>Carpinus betulinus Fastigiata</i>	Upright Hornbeam
<i>Fraxinus excelsior</i>	Hanmer Ash
<i>Quercus cerris</i>	Turkey Oak
<i>Tilia cordata</i>	Small-leaved Lime
<i>Tilia x europaea</i>	Common Lime



Rural Boundary Trees / Avenue Trees



Rural Shelterbelts



Carpark Trees



Terrace Native Trees



Orchard Trees



Evergreen Screen Planting



Amenity Trees



Fruit trees

NOTES

CONTRACTORS TO VERIFY ALL DIMENSIONS ON SITE PRIOR TO COMMENCING WORK;
CONTRACTORS ARE RESPONSIBLE FOR CONFIRMING THE LOCATION OF ALL UNDERGROUND SERVICES ON SITE PRIOR TO COMMENCING WORK;
FIGURED DIMENSIONS TO BE TAKEN IN PREFERENCE TO SCALED DIMENSIONS.

KEY

REV DATE DESCRIPTION

QUEENSTOWN LAKES DISTRICT
COUNCIL

APPROVED PLAN:
SH160140

Monday, 3 April 2017

CLIENT SANDERSON GROUP

CONSULTANTS

For Resource Consent

QUEENSTOWN COUNTRY CLUB

PLANTING PLAN - PLANT LIST

Design Drawn Check App'd	KCh SCa JRe JrE	Scale NTS	Date 2017.02.03
DRAWING NO.		REVISION	
C16005A_242		1	

PLANT LIST (CONTINUED)

QUEENSTOWN LAKES DISTRICT COUNCIL

APPROVED PLAN:
SH160140

Monday, 3 April 2017



Terrace native shrubs and grasses



Hydrangea spp



Poa cita, silver tussock



Corokia 'Frosted Chocolate'



Lavender

Amenity Ground covers & Grasses

Botanical Name	Common Name
Agapanthus 'Peter Pan'	Agapanthus
Agapanthus 'Snowball'	Agapanthus
Agapanthus Tinkerbelle	Agapanthus
Carex comas	Carex
Carex testacea	Carex
Chinochloa flavicons	Dwarf toe toe
Convolvulus mauritanicus	Trailing Convolvulus
Coprosma 'kirkii'	Groundcover coprosma
Coprosma 'red rocks'	Red coprosma
Lithodora spp	Blue flowering ground cover
Parahebe 'baby blue	Parahebe, blue
Parahebe 'snowcap'	Parahebe white
Pimelea prostrata	Pinatoro
Pachystegia rufa	Marlborough Rock Daisy
Phormium cookianum 'Emerald Green'	Dwarf mountain flax
Rosemary 'Lockwood de forest'	Rosemary, groundcover
Rosemary prostrata	Rosemary, groundcover
Euonymus microphylla 'emerald gem'	Clipped shrub

Amenity Shrubs & Hedges

Botanical Name	Common Name
Aucuba Crotonoides	Spotted laurel
Azalea spp	Azalea
Camellia spp	Camellia
Choisya Ternata	Mexican orange blossom
Daphne bholua	Daphne
Erica carnea 'Springwood White'	Erica/Heath
Hebe diosmifolia	Hebe
Hydrangea spp	Hydrangea
Ilex aquifolium 'Green Pillar'	English Holly
Lavender	Lavandula angustifolia
Lemon meyer	Eating lemon
Magnolia stellata	Star magnolia
Michelia spp	Michelia
Nandina 'Gulfstream'	Nandina
Nandina 'Pygmea'	Nandina
Phormium cookianum	Mountain flax
Pieris formosa 'Wakehurst'	Pieris
Pieris - Temple Bells	Pieris
Pittosporum tenuifolium 'mountain green'	Pittosporum
Prunus lusitanica	Portuguese Laurel

Amenity Shrubs & Hedges cont.

Botanical Name	Common Name
Buxus Micropylla	Japanese Box
Camellia 'Setsugekka'	Hedge Camellia
Corokia 'Frosted Chocolate'	Corokia, bronze
Corokia 'Geentys Green'	Corokia, green
Escallonia 'White Knight'	Escallonia
Griselinia littoralis	Kapuka
Loropetalum 'China Pink'	Loropetalum
Pittosporum 'Golfball'	Pittosporum

Rural Shelterbelt



Botanical Name	Common Name
Cupressus Leylandii	Leyland cypress (trimmed)
Pittosporum tenuifolium	Kohuhu

Terrace Native Trees



Botanical Name	Common Name
Kunzea ericioides	Kanuka
Fuscospora cliffortioides	Mountain beech
Fuscospora fusca	Red beech/ tawhai raunui
Podocarpus halli	Hall's totara
Hoheria Lyallii	Lacebark/houhere
Sophora microphylla	Kōwhai
Griselinia littoralis	Broadleaf/Kapuka
Pittosporum tenuifolium	Kohuhu

Terrace Native Shrubs & Grasses



Botanical Name	Common Name
Coprosma propinqua	Mingimingi
Coprosma rhamnoides	Coprosma
Phormium cookianum	Mountain flax/harakeke
Poa cita	Silver tussock
Chionochloa rigida	Narrow-leaved tussock
Discaria toumatou	Matagouri, wild Irishman



NOTES

CONTRACTORS TO VERIFY ALL DIMENSIONS ON SITE PRIOR TO COMMENCING WORK;

CONTRACTORS ARE RESPONSIBLE FOR CONFIRMING THE LOCATION OF ALL UNDERGROUND SERVICES ON SITE PRIOR TO COMMENCING WORK;

FIGURED DIMENSIONS TO BE TAKEN IN PREFERENCE TO SCALED DIMENSIONS.

KEY

REV DATE DESCRIPTION

CLIENT **SANDERSON GROUP**

CONSULTANTS

For Resource Consent

QUEENSTOWN COUNTRY CLUB

MASTER PLAN

Design Drawn Check App'd	KCh SCa JRe JrE	Scale NTS	Date 2017.03.22
DRAWING NO.		REVISION	
C16005A_244		3	

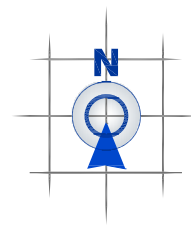
- Subdivision Stages:**
- Stage 2 to occur after Stage 1.

QUEENSTOWN LAKES DISTRICT COUNCIL

**APPROVED PLAN:
SH160140**

Monday, 3 April 2017

Not approved Club House size. Please refer to the plans titled 'Draft Club House Small Option'. Updated plans required.



FRANKTON - LADIES MILE HWY (S.H. 6)

existing right to locate a transformer, site electricity transformer & convey electricity (all in gross) TO BE RETAINED
existing easement to convey electricity and take and convey water (not in gross)

**LOT 1
19.3729 ha**

**LOT 2
4.0834 ha**

Legend

- Proposed Boundary
- Abuttal/underlying Boundary
- Proposed Right of Way (ped.)
- Existing Easement
- Masterplan by Boffa Miskell (if shown, 22/03/17)

0m 50m 100m 150m
SCALE BAR

PATERSONPITTSGROUP
Surveying • Planning • Engineering
Your Land Professionals
www.ppgroup.co.nz
0800 PPGROUP

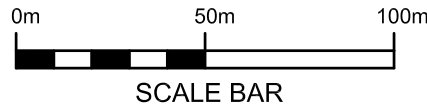
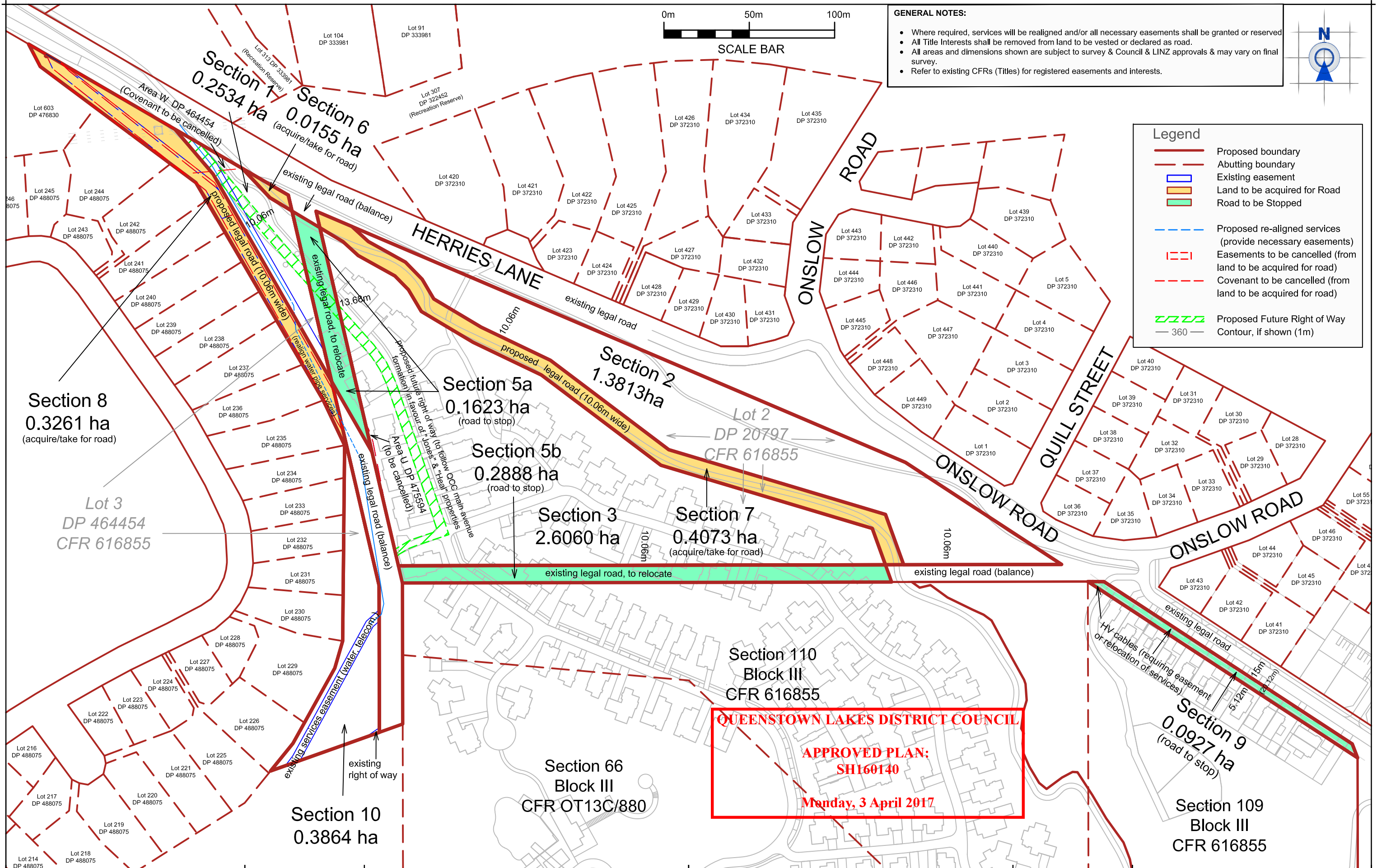
QUEENSTOWN:
Terrace Junction,
1092 Frankton Road.
PO Box 2645.
Queenstown 9349.
T 03 441 4715
E queenstown@ppgroup.co.nz

Client/Location:
Sanderson Group Ltd
420 Frankton - Ladies Mile Highway,
Lake Hayes

Purpose/Drawing Title:
PROPOSED SUBDIVISION - STAGE 2
Lots 1 & 2 Being Subdivision of
Lot 2 [Stage 1]

© COPYRIGHT. This drawing, content and design remains the property of Paterson Pitts Partners Limited and may not be reproduced in part or full or altered without the written permission of Paterson Pitts Partners Limited. This drawing and its content shall only be used for the purpose for which it is intended. No liability shall be accepted by Paterson Pitts Partners Limited for its unauthorized use

Surveyed by:	HS/LR	Original Size:	Scale:
Designed by:	SW	A3	1:2500
Drawn by:	BL		
Checked by:	SW		
Approved by:	SW	DO NOT SCALE	
Job Ref:	Q6231-12	Sheet No:	Revision No:
		2	J
			Date Created:
			29/03/2017



- GENERAL NOTES:**
- Where required, services will be realigned and/or all necessary easements shall be granted or reserved
 - All Title Interests shall be removed from land to be vested or declared as road.
 - All areas and dimensions shown are subject to survey & Council & LINZ approvals & may vary on final survey.
 - Refer to existing CFRs (Titles) for registered easements and interests.



Legend

- Proposed boundary
- Abutting boundary
- Existing easement
- Land to be acquired for Road
- Road to be Stopped
- Proposed re-aligned services (provide necessary easements)
- Easements to be cancelled (from land to be acquired for road)
- Covenant to be cancelled (from land to be acquired for road)
- Proposed Future Right of Way
- 360 Contour, if shown (1m)

QUEENSTOWN LAKES DISTRICT COUNCIL

APPROVED PLAN:
SH160140

Monday, 3 April 2017

<div><div><div><div><div><div></div><div></div><div></div><div></div><div></div><div></div><div></div><div></div><div></div><div></div><div></div><div></div><div></div><div></div><div></div><div></div><div></div><div></div><div></div><div></div><div></div><div></div><div></div><div></div><div></div><div></div><div></div><div></div><div></div><div></div><div></div><div></div><div></div><div></div><div></div><div></div><div></div><div></div><div></div><div></div><div></div><div></div><div></div><div></div><div></div><div></div><div></div><div></div><div></div><div></div><div></div><div></div><div></div><div></div><div></div><div></div><div></div><div></div><div></div><div></div><div></div><div></div><div></div><div></div><div></div><div></div><div></div><div></div><div></div><div></div><div></div><div></div><div></div><div></div><div></div><div></div><div></div><div></div><div></div><div></div><div></div><div></div><div></div><div></div><div></div><div></div><div></div><div></div><div></div><div></div><div></div><div></div><div></div><div></div><div></div><div></div><div></div><div></div><div></div><div></div><div></div><div></div><div></div><div></div><div></div><div></div><div></div><div></div><div></div><div></div><div></div><div></div><div></div><div></div><div></div><div></div><div></div><div></div><div></div><div></div><div></div><div></div><div></div><div></div><div></div><div></div><div></div><div></div><div></div><div></div><div></div><div></div><div></div><div></div><div></div><div></div><div></div><div></div><div></div><div></div><div></div><div></div><div></div><div></div><div></div><div></div><div></div><div></div><div></div><div></div><div></div><div></div><div></div><div></div><div></div><div></div><div></div><div></div><div></div><div></div><div></div><div></div><div></div><div></div><div></div><div></div><div></div><div></div><div></div><div></div><div></div><div></div><div></div><div></div><div></div><div></div><div></div><div></div><div></div><div></div><div></div><div></div><div></div><div></div><div></div><div></div><div></div><div></div><div></div><div></div><div></div><div></div><div></div><div></div><div></div><div></div><div></div><div></div><div></div><div></div><div></div><div></div><div></div><div></div><div></div><div></div><div></div><div></div><div></div><div></div><div></div><div></div><div></div><div></div><div></div><div></div><div></div><div></div><div></div><div></div><div></div><div></div><div></div><div></div><div></div><div></div><div></div><div></div><div></div><div></div><div></div><div></div><div></div><div></div><div></div><div></div><div></div><div></div><div></div><div></div><div></div><div></div><div></div><div></div><div></div><div></div><div></div><div></div><div></div><div></div><div></div><div></div><div></div><div></div><div></div><div></div><div></div><div></div><div></div><div></div><div></div><div></div><div></div><div></div><div></div><div></div><div></div><div></div><div></div><div></div><div></div><div></div><div></div><div></div><div></div><div></div><div></div><div></div><div></div><div></div><div></div><div></div><div></div><div></div><div></div><div></div><div></div><div></div><div></div><div></div><div></div><div></div><div></div><div></div><div></div><div></div><div></div><div></div><div></div><div></div><div></div><div></div><div></div><div></div><div></div><div></div><div></div><div></div><div></div><div></div><div></div><div></div><div></div><div></div><div></div><div></div><div></div><div></div><div></div><div></div><div></div><div></div><div></div><div></div><div></div><div></div><div></div><div></div><div></div><div></div><div></div><div></div><div></div><div></div><div></div><div></div><div></div><div></div><div></div><div></div><div></div><div></div><div></div><div></div><div></div><div></div><div></div><div></div><div></div><div></div><div></div><div></div><div></div><div></div><div></div><div></div><div></div><div></div><div></div><div></div><div></div><div></div><div></div><div></div><div></div><div></div><div></div><div></div><div></div><div></div><div></div><div></div><div></div><div></div><div></div><div></div><div></div><div></div><div></div><div></div><div></div><div></div><div></div><div></div><div></div><div></div><div></div><div></div><div></div><div></div><div></div><div></div><div></div><div></div><div></div><div></div><div></div><div></div><div></div><div></div><div></div><div></div><div></div><div></div><div></div><div></div><div></div><div></div><div></div><div></div><div></div><div></div><div></div><div></div><div></div><div></div><div></div><div></div><div></div><div></div><div></div><div></div><div></div><div></div><div></div><div></div><div></div><div></div><div></div><div></div><div></div><div></div><div></div><div></div><div></div><div></div><div></div><div></div><div></div><div></div><div></div><div></div><div></div><div></div><div></div><div></div><div></div><div></div><div></div><div></div><div></div><div></div><div></div><div></div><div></div><div></div><div></div><div></div><div></div><div></div><div></div><div></div><div></div><div></div><div></div><div></div><div></div><div></div><div></div><div></div><div></div><div></div><div></div><div></div><div></div><div></div><div></div><div></div><div></div><div></div><div></div><div></div><div></div><div></div><div></div><div></div><div></div><div></div><div></div><div></div><div></div><div></div><div></div><div></div><div></div><div></div><div></div><div></div><div></div><div></div><div></div><div></div><div></div><div></div><div></div><div></div><div></div><div></div><div></div><div></div><div></div><div></div><div></div><div></div><div></div><div></div><div></div><div></div><div></div><div></div><div></div><div></div><div></div><div></div><div></div><div></div><div></div><div></div><div></div><div></div><div></div><div></div><div></div><div></div><div></div><div></div><div></div><div></div><div></div><div></div><div></div><div></div><div></div><div></div><div></div><div></div><div></div><div></div><div></div><div></div><div></div><div></div><div></div><div></div><div></div><div></div><div></div><div></div><div></div><div></div><div></div><div></div><div></div><div></div><div></div><div></div><div></div><div></div><div></div><div></div><div></div><div></div><div></div><div></div><div></div><div></div><div></div><div></div><div></div><div></div><div></div><div></div><div></div><div></div><div></div><div></div><div></div><div></div><div></div><div></div><div></div><div></div><div></div><div></div><div></div><div></div><div></div><div></div><div></div><div></div><div></div><div></div><div></div><div></div><div></div><div></div><div></div><div></div><div></div><div></div><div></div><div></div><div></div><div></div><div></div><div></div><div></div><div></div><div></div><div></div><div></div><div></div><div></div><div></div><div></div><div></div><div></div><div></div><div></div><div></div><div></div><div></div><div></div><div></div><div></div><div></div><div></div><div></div><div></div><div></div><div></div><div></div><div></div><div></div><div></div><div></div><div></div><div></div><div></div><div></div><div></div><div></div><div></div><div></div><div></div><div></div><div></div><div></div><div></div><div></div><div></div><div></div><div></div><div></div><div></div><div></div><div></div><div></div><div></div><div></div><div></div><div></div><div></div><div></div><div></div><div></div><div></div><div></div><div></div><div></div><div></div><div></div><div></div><div></div><div></div><div></div><div></div><div></div><div></div><div></div><div></div><div></div><div></div><div></div><div></div><div></div><div></div><div></div><div></div><div></div><div></div><div></div><div></div><div></div><div></div><div></div><div></div><div></div><div></div><div></div><div></div><div></div><div></div><div></div><div></div><div></div><div></div><div></div><div></div><div></div><div></div><div></div><div></div><div></div><div></div><div></div><div></div><div></div><div></div><div></div><div></div><div></div><div></div><div></div><div></div><div></div><div></div><div></div><div></div><div></div><div></div><div></div><div></div><div></div><div></div><div></div><div></div><div></div><div></div><div></div><div></div><div></div><div></div><div></div><div></div><div></div><div></div><div></div><div></div><div></div><div></div><div></div><div></div><div></div><div></div><div></div><div></div><div></div><div></div><div></div><div></div><div></div><div></div><div></div><div></div><div></div><div></div><div></div><div></div><div></div><div></div><div></div><div></div><div></div><div></div><div></div><div></div><div></div><div></div><div></div><div></div><div></div><div></div><div></div><div></div><div></div><div></div><div></div><div></div><div></div><div></div><div></div><div></div><div></div><div></div><div></div><div></div><div></div><div></div><div></div><div></div><div></div><div></div><div></div><div></div><div></div><div></div><div></div><div></div><div></div><div></div><div></div><div></div><div></div><div></div><div></div><div></div><div></div><div></div><div></div><div></div><div></div><div></div><div></div><div></div><div></div><div></div><div></div><div></div><div></div><div></div><div></div><div></div><div></div><div></div><div></div><div></div><div></div><div></div><div></div><div></div><div></div><div></div><div></div><div></div><div></div><div></div><div></div><div></div><div></div><div></div><div></div><div></div><div></div><div></div><div></div><div></div><div></div><div></div><div></div><div></div><div></div><div></div><div></div><div></div><div></div><div></div><div></div><div></div><div></div><div></div><div></div><div></div><div></div><div></div><div></div><div></div><div></div><div></div><div></div><div></div><div></div><div></div><div></div><div></div><div></div><div></div><div></div><div></div><div></div><div></div><div></div><div></div><div></div><div></div><div></div><div></div><div></div><div></div><div></div><div></div><div></div><div></div><div></div><div></div><div></div><div></div><div></div><div></div><div></div><div></div><div></div><div></div><div></div><div></div><div></div><div></div><div></div><div></div><div></div><div></div><div></div><div></div><div></div><div></div><div></div><div></div><div></div><div></div><div></div><div></div><div></div><div></div><div></div><div></div><div></div><div></div><div></div><div></div><div></div><div></div><div></div><div></div><div></div><div></div><div></div><div></div><div></div><div></div><div></div><div></div><div></div><div></div><div></div><div></div><div></div><div></div><div></div><div></div><div></div><div></div><div></div><div></div><div></div><div></div><div></div><div></div><div></div><div></div><div></div><div></div><div></div><div></div><div></div><div></div><div></div><div></div><div></div><div></div><div></div><div></div><div></div><div></div><div></div><div></div><div></div><div></div><div></div><div></div><div></div><div></div><div></div><div></div><div></div><div></div><div></div><div></div><div></div><div></div><div></div><div></div><div></div><div></div><div></div><div></div><div></div><div></div><div></div><div></div><div></div><div></div><div></div><div></div><div></div><div></div><div></div><div></div><div></div><div></div><div></div><div></div><div></div><div></div><div></div><div></div><div></div><div></div><div></div><div></div><div></div><div></div><div></div><div></div><div></div><div></div><div></div><div></div><div></div><div></div><div></div><div></div><div></div><div></div><div></div><div></div><div></div><div></div><div></div><div></div><div></div><div></div><div></div><div></div><div></div><div></div><div></div><div></div><div></div><div></div><div></div><div></div><div></div><div></div><div></div><div></div><div></div><div></div><div></div><div></div><div></div><div></div><div></div><div></div><div></div><div></div><div></div><div></div><div></div><div></div><div></div><div></div><div></div><div></div><div></div><div></div><div></div><div></div><div></div><div></div><div></div><div></div><div></div><div></div><div></div><div></div><div></div><div></div><div></div><div></div><div></div><div></div><div></div><div></div><div></div><div></div><div></div><div></div><div></</div></div></div></div></div></div>
--

Lot 1 hereon is to be held in the same computer register as Section 10 hereon and Lot 2 DP 475594 (CFR 655531) pursuant to S.241 of the RMA

Lots 3 & 4 hereon are to be held in the same computer register (CFR) pursuant to S.241 of the RMA

Parcels identified as Sections 1-3, 5a & 5b, 6-10 hereon are the subject of a concurrent road relocation / road stopping application. Gazettal of these sections would precede Stage 4

- Subdivision Stages:
- Stage 2 to occur after Stage 1.
 - Stage 4 to occur after Stage 3.
 - Stages 6 and 8 may occur in any order or combination after Stage 4.
 - Stage 7 may occur in any order or combination with other stages.

QUEENSTOWN LAKES DISTRICT COUNCIL

APPROVED PLAN:
SH160140

Monday, 3 April 2017

Legend

- Proposed Boundary
- Abuttal/underlying Boundary
- Proposed Right of Way
- Proposed Future Right of Way
- Proposed Right of Way (ped.)
- Existing Easement
- Masterplan by Boffa Miskell (if shown, 22/03/17)

- GENERAL NOTES:
- Where required, services will be realigned and/or all necessary easements shall be granted or reserved
 - All Title Interests shall be removed from land to be vested or declared as road.
 - All areas and dimensions shown are subject to survey & Council & LINZ approvals & may vary on final survey.
 - Refer to existing CFRs (Titles) for registered easements and interests.

PATERSONPITTS GROUP

Surveying • Planning • Engineering

Your Land Professionals
www.ppgroup.co.nz
0800 PPGROUP

QUEENSTOWN:
Terrace Junction,
1092 Frankton Road.
PO Box 2645.
Queenstown 9349.
T 03 441 4715
E queenstown@ppgroup.co.nz

Client/Location:

Sanderson Group
444 Frankton - Ladies Mile Highway &
Jones Avenue, Lake Hayes

Purpose/Drawing Title:

PROPOSED SUBDIVISION - STAGE 4 -
BOUNDARY ADJUSTMENT

Lots 1 - 4 Being a Proposed Subdivision of Sections
66,109,110 Block III & Sections 1, 2, 3, 5a, 5b, 8 & 10

© COPYRIGHT. This drawing, content and design remains the property of Paterson Pitts Partners Limited and may not be reproduced in part or full or altered without the written permission of Paterson Pitts Partners Limited. This drawing and its content shall only be used for the purpose for which it is intended. No liability shall be accepted by Paterson Pitts Partners Limited for its unauthorized use

Surveyed by:	HS/LR	Original Size: A3	Scale:	
Designed by:	SW		1:4000	
Drawn by:	BL			
Checked by:	SW			
Approved by:	SW		DO NOT SCALE	
Job Ref: Q6231-12		Sheet No: 4	Revision No: J	Date Created: 29/03/2017

QUEENSTOWN LAKES DISTRICT COUNCIL

APPROVED PLAN:
SH160140

Monday, 3 April 2017



This page is intentionally left blank
(Stage 5 is no longer being pursued)

PATERSONPITTSGROUP

Surveying • Planning • Engineering

Your Land Professionals
www.ppgroup.co.nz
0800 PPGROUP



QUEENSTOWN:
Terrace Junction,
1092 Frankton Road.
PO Box 2645,
Queenstown 9349.
T 03 441 4715
E queenstown@ppgroup.co.nz

Client/Location:

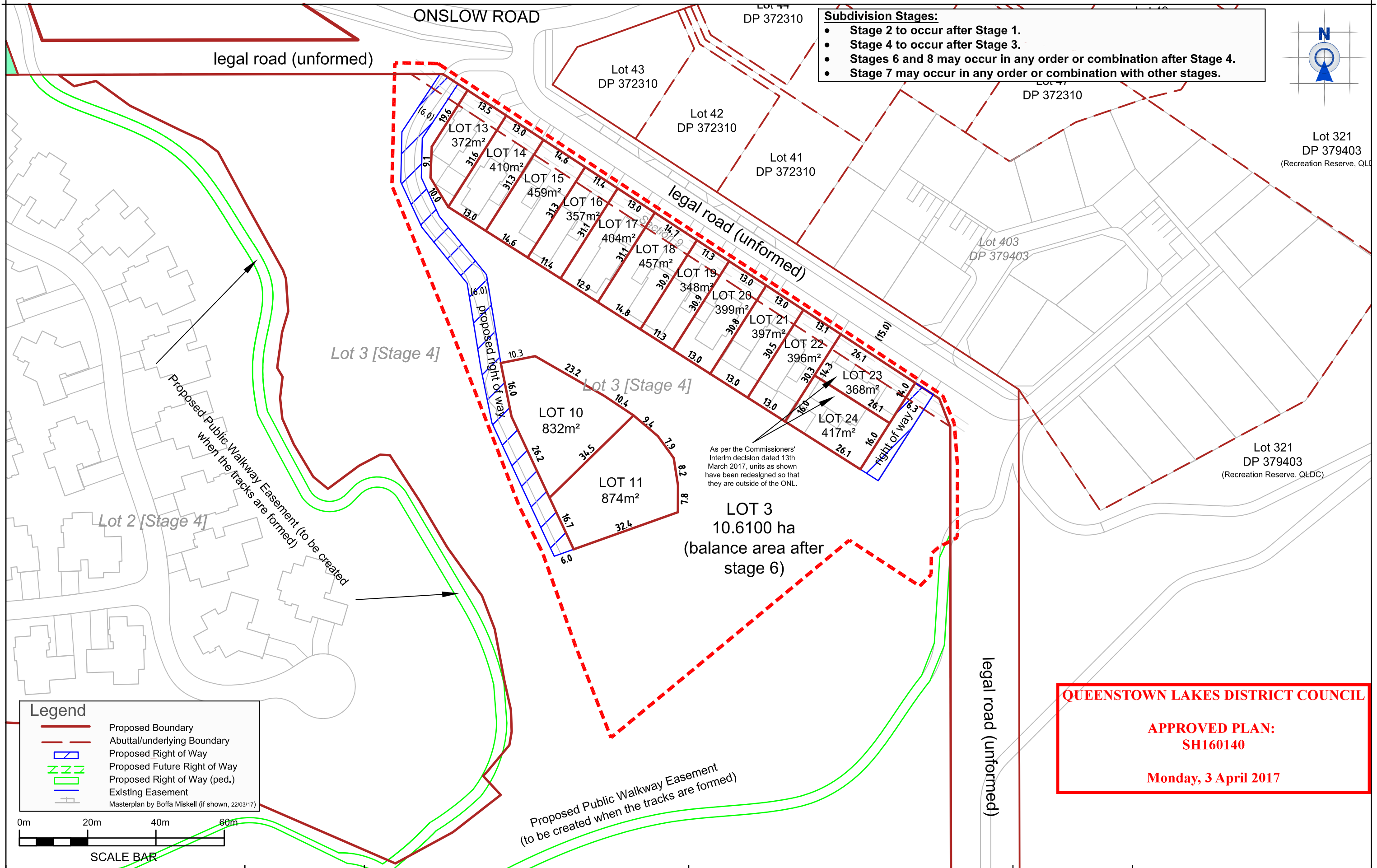
Sanderson Group
444 Frankton - Ladies Mile Highway &
Jones Avenue, Lake Hayes

Purpose/Drawing Title:

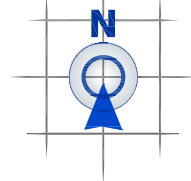
STAGE 5

© COPYRIGHT. This drawing, content and design remains the property of Paterson Pitts Partners Limited and may not be reproduced in part or full or altered without the written permission of Paterson Pitts Partners Limited. This drawing and its content shall only be used for the purpose for which it is intended. No liability shall be accepted by Paterson Pitts Partners Limited for its unauthorized use

Surveyed by:	HS/LR	Original Size: A3	Scale:	
Designed by:	SW			
Drawn by:	BL			
Checked by:	SW		DO NOT SCALE	
Approved by:	SW			
Job Ref: Q6231-12		Sheet No: 5	Revision No: J	Date Created: 29/03/2017



- Subdivision Stages:**
- Stage 2 to occur after Stage 1.
 - Stage 4 to occur after Stage 3.
 - Stages 6 and 8 may occur in any order or combination after Stage 4.
 - Stage 7 may occur in any order or combination with other stages.



Lot 321
DP 379403
(Recreation Reserve, QLDC)

Lot 321
DP 379403
(Recreation Reserve, QLDC)

As per the Commissioners' interim decision dated 13th March 2017, units as shown have been redesigned so that they are outside of the ONL.

LOT 3
10.6100 ha
(balance area after stage 6)

Legend

- Proposed Boundary
- Abuttal/underlying Boundary
- Proposed Right of Way
- Proposed Future Right of Way
- Proposed Right of Way (ped.)
- Existing Easement
- Masterplan by Boffa Miskell (if shown, 22/03/17)



SCALE BAR

QUEENSTOWN LAKES DISTRICT COUNCIL

**APPROVED PLAN:
SH160140**

Monday, 3 April 2017

PATERSONPITTSGROUP
Surveying • Planning • Engineering
Your Land Professionals
www.ppgroup.co.nz
0800 PPGROUP

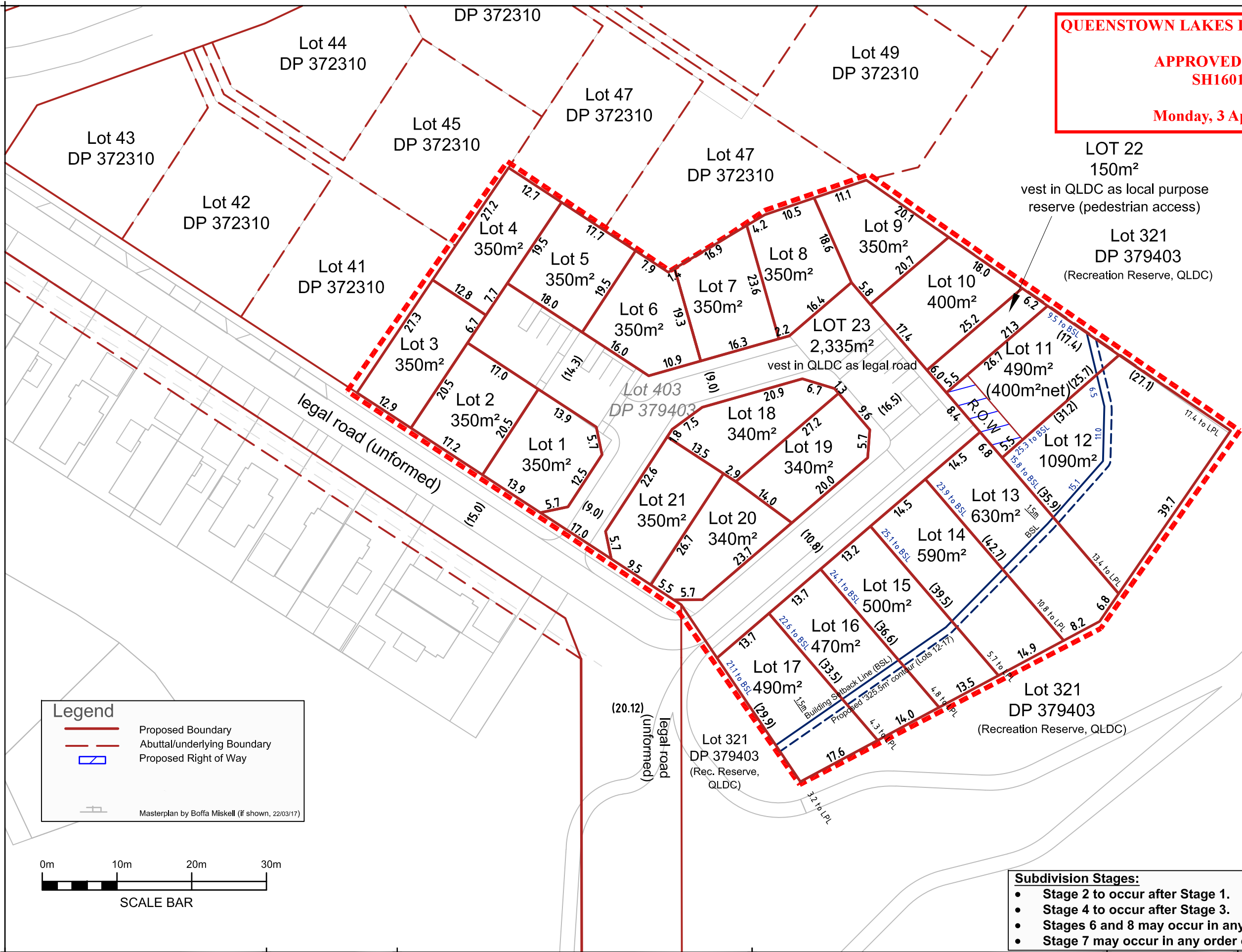
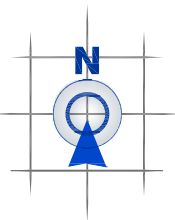
QUEENSTOWN:
Terrace Junction,
1092 Frankton Road.
PO Box 2645,
Queenstown 9349.
T 03 441 4715
E queenstown@ppgroup.co.nz

Client/Location:
Sanderson Group
**444 Frankton - Ladies Mile Highway &
Jones Avenue, Lake Hayes**

Purpose/Drawing Title:
PROPOSED SUBDIVISION - STAGE 6
Lots 3 and 10-11 and 13 - 24
**Being a Proposed Subdivision of Lot 3 [Stage 4]
& Section 9 [Stage 3]**

© COPYRIGHT. This drawing, content and design remains the property of Paterson Pitts Partners Limited and may not be reproduced in part or full or altered without the written permission of Paterson Pitts Partners Limited. This drawing and its content shall only be used for the purpose for which it is intended. No liability shall be accepted by Paterson Pitts Partners Limited for its unauthorized use.

Surveyed by:	HS/LR	Original Size:
--------------	-------	--



Legend

- Proposed Boundary
- Abuttal/underlying Boundary
- Proposed Right of Way

Masterplan by Boffa Miskell (if shown, 22/03/17)



Subdivision Stages:

- Stage 2 to occur after Stage 1.
- Stage 4 to occur after Stage 3.
- Stages 6 and 8 may occur in any order or combination after Stage 4.
- Stage 7 may occur in any order or combination with other stages.

PATERSONPITTSGROUP

Surveying • Planning • Engineering

Your Land Professionals
www.ppgroup.co.nz
0800 PPGROUP



QUEENSTOWN:
Terrace Junction,
1092 Frankton Road.
PO Box 2645,
Queenstown 9349.
T 03 441 4715
E queenstown@ppgroup.co.nz

Client/Location:

Sanderson Group Ltd
444 Frankton - Ladies Mile Highway,
Jones Avenue &
Lot 403 DP 379402 Lake Hayes

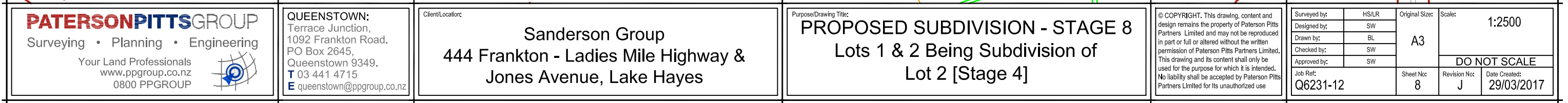
Purpose/Drawing Title:

PROPOSED SUBDIVISION - STAGE 7
Lots 1 - 23
Being a Proposed Subdivision of
Lot 403 DP 379403

© COPYRIGHT. This drawing, content and design remains the property of Paterson Pitts Partners Limited and may not be reproduced in part or full or altered without the written permission of Paterson Pitts Partners Limited. This drawing and its content shall only be used for the purpose for which it is intended. No liability shall be accepted by Paterson Pitts Partners Limited for its unauthorized use

Surveyed by:	-
Designed by:	-
Drawn by:	BL
Checked by:	SW
Approved by:	SW
Job Ref:	Q6231-12

Original Size:	Scale:	
A3	1:750	
DO NOT SCALE		
Sheet No:	Revision No:	Date Created:
7	J	29/03/2017



STAGE 1 (NORTHERN SITE)

Proposed Easements			
Purpose	Parcel Identifier	Servient Tenement	Grantee
Public Walkway Easement	Unhatched Green	Lot 1 hereon	Queenstown Lakes District Council

Existing Easements			
Purpose	Parcel Identifier	Servient Tenement	Creating Document
Right to convey electricity and take and convey water	Areas A, AA, AB DP 470412	Lot 1 hereon	T 5009953.6 T 5037895.3

Existing Easements to be cancelled			
Purpose	Parcel Identifier	Servient Tenement	Creating Document
Right of Way	Areas D, M, N, H DP 470412	N/A	T 890871.4
Right to convey water	Areas B, BA, G, I DP 470412	N/A	T 5011453.2 EC 5011453.3 T 5037895.2
Right to convey telecommunications	Areas C, O, L, G, I DP 470412	N/A	T 5011453.2 EC 5011453.3 T 5037895.2

Existing Easements in Gross			
Purpose	Parcel Identifier	Servient Tenement	Creating Document
Right to convey water	Areas P, C, D, O, N, Q on DP 470412	Lots 1 & 2 hereon	T 845710
Right to convey electricity	Areas AB, BA DP 470412	Lot 1 hereon	T 512767.1
Right to locate a transformer	Area A DP 470412	Lot 1 hereon	T 5177676.1
Right to site electricity transformer	A, AA, AB DP 470412	Lot 1 hereon	T 5037895.1

Existing Easements in Gross to be cancelled			
Purpose	Parcel Identifier	Servient Tenement	Creating Document
Right to convey electricity	Area BB DP 470412	N/A	T 5127676.1
Right to locate a transformer	Area CA DP 470412	N/A	T 5127676.1

- Notations**
- Existing covenants to be cancelled and new covenants created where necessary.
 - Proposed Public Walkway Easement to be created after the tracks are formed
 - All necessary easements for services to be provided
 - Easements listed as cancelled above can occur during this stage or during Stage 2.

Stage 5 - schedule deleted
(stage 5 is no longer being pursued)

STAGE 2

Proposed Easements in Gross			
Purpose	Parcel Identifier	Servient Tenement	Grantee
Public Walkway Easement	Unhatched Green	Lots 1, 2 hereon	Queenstown Lakes District Council

Existing Easements in Gross			
Purpose	Parcel Identifier	Servient Tenement	Creating Document
Right to convey water	Areas P, C, D, O, N, Q on DP 470412	Lot 1 hereon	T 845710

- Notations**
- Existing covenants to be cancelled and new covenants created where necessary
 - Proposed Public Walkway Easement to be created after the tracks are formed
 - All necessary easements for services to be provided
 - Easements listed as cancelled during the Northern Site Bdy, Adj. may be cancelled during that stage or during Stage 2.

STAGE 6 (ONSLow ROAD WEST SITE)

Proposed Easements			
Purpose	Parcel Identifier	Servient Tenement	Dominant Tenement/Grantee
Right of Way Right to drain water, right to drain sewage, right to convey water, right to convey electricity and right to convey telecommunications and computer media	hatched blue	Balance Lot 3 hereon	Lots 10 & 11 hereon
Right of way, right to drain water, right to drain sewage, right to convey water, right to convey electricity and right to convey telecommunications and computer media	hatched blue	Balance Lot 3 hereon	Lots 23 & 24 hereon
Right to drain water, right to drain sewage, right to convey water, right to convey electricity and right to convey telecommunications and computer media	hatched blue	Balance Lot 3 hereon	QLDC, [Elec. Provider], Chorus NZ Ltd

Existing Easements in Gross			
Purpose	Parcel Identifier	Servient Tenement	Creating Document
Public Walkway Easement	Unhatched Green	Balance Lot 3 hereon	Queenstown Lakes District Council
Right to convey electricity*	See 'HV cable in Omslow Rd'	Lots 13-23 hereon	Aurora Energy Limited
Right to convey electricity	See 'Overhead Powerlines'	Balance Lot 3 hereon	Aurora Energy Ltd

- Notations:**
- Existing covenants to be cancelled and new covenants created where
 - Proposed Public Walkway Easement to be created after the tracks are
 - * Electricity easement in gross will only be required if the services are
 - All necessary easements for services to be provided

Amalgamation Condition(s):
Lot 3 (balance lot) & Lot 4 (Stage 4) hereon shall be held in the same CFR (Computer Freehold Register)

Road Legalisation (Stage 3)
(affecting CFR 616855 - Lot 3 DP 464454, Lot 2 DP 20797, Sec 109, Sec 110)

EASEMENT SCHEDULE - ROAD LEGALISATION PLAN

Proposed Easements			
Purpose	Parcel Identifier	Servient Tenement	Dominant Tenement
Right of way	Hatched Green	Sections 1, 3 hereon	Lot 2 DP 475594
Right of way**	L, N, P DP 464454	Section 1 hereon	Lot 2 DP 475594

Existing Easements			
Purpose	Parcel Identifier	Servient Tenement	Creating Document
Right of way	M DP 464454	Section 10 hereon	T 890871.4
Right of way	L, N, P DP 464454	Section 1 hereon	T 890871.4
Right to convey water, Right to convey telecommunications and computer media	V(part) DP 475594 W DP 475594	Section 1 hereon Section 10 hereon	El 9733475.4

Existing Easements to be cancelled*			
Purpose	Parcel Identifier	Servient Tenement	Creating Document
Right to convey water, Right to convey telecommunications and computer media	V(part), U DP 475594	Lot 2 DP 20797	El 9733475.4

- Notations**
- Sections 1, 2, 3, 5, 6, 7, 10 hereon (affects formerly Lot 3 DP 464454, Lot 2 DP 20797) have the following to be cancelled:
 - An existing Notice pursuant to Section 91 Transit New Zealand Act 1989 (5015474.2)
 - Proposed Easements over stopped road parcels, or relocate services (See E): Electricity cables (Aurora Energy, Electricity Southland) and water pipes (QLDC) requiring easements. * Cancel easements where services are relocated to other locations.
 - The right of way** in favour of Lot 2 DP 475594 is interim; until such time as the green hatched right of way over the QCC main avenue is constructed and registered.

STAGE 7 (ONSLow ROAD EAST SITE)

Proposed Easements			
Purpose	Parcel Identifier	Servient Tenement	Dominant Tenement
Right of Way, right to convey water, elec. telecom; right to drain water and sewage	Hatched Blue	Lot 11 hereon	Lot 12 hereon

- Notations**
- All necessary easements for services to be provided

QUEENSTOWN LAKES DISTRICT COUNCIL

APPROVED PLAN:
SH160140

Monday, 3 April 2017

STAGE 4 (SOUTHERN SITE)

Proposed Easements			
Purpose	Parcel Identifier	Servient Tenement	Dominant Tenement
Right of Way	Hatched Green	Lot 2 hereon	Lot 1 hereon, Lot 2 DP 475594, Lot 1 DP 24619
Right of Way**	Hatched Orange	Lot 2 hereon	Lot 1 hereon, Lot 2 DP 475594

Proposed Easements in Gross			
Purpose	Parcel Identifier	Servient Tenement	Grantee
Public Walkway Easement	Unhatched Green	Lots 2-4 hereon	Queenstown Lakes District Council
Right to convey electricity	See 'HV cables at Omslow Rd'	Lot 4 hereon	Aurora Energy Limited, Electricity Southland Limited
Right to convey electricity	See 'Overhead Powerlines'	Lots 1-3 hereon	Aurora Energy Limited

Existing Easements in Gross			
Purpose	Parcel Identifier	Servient Tenement	Creating Document
Right to convey water, Right to convey telecommunications and computer media	S, T	Lot 1 hereon	El 9733475.4
Right of Way, Right to convey water, Right to convey telecommunications and computer media	P, Q	Lot 1 hereon	El 9733475.4
Right of Way	R, O	Lot 1 hereon	El 9733475.4

- Notations:**
- Existing covenants to be cancelled and new covenants created where necessary
 - Proposed Public Walkway Easement to be created after the tracks are formed
 - Electrical easement in gross will only be required if the services are not realigned
 - All necessary easements for services to be provided
 - The right of way** (coloured orange) is interim; until such time as the green hatched permanent right of way over the QCC main avenue is constructed and registered

Amalgamation Condition(s):
Lots 3 & 4 hereon (Stage 4) shall be held in the same CFR (Computer Freehold Register)
Lot 2 hereon (Stage 4) and Section 1 (Stage 3) shall be held in the same CFR (Computer Freehold Register)

STAGE 8

Proposed Easements			
Purpose	Parcel Identifier	Servient Tenement	Dominant Tenement
Right of Way	Hatched Blue & Hatched Green	Lot 1 hereon	Lot 2 hereon

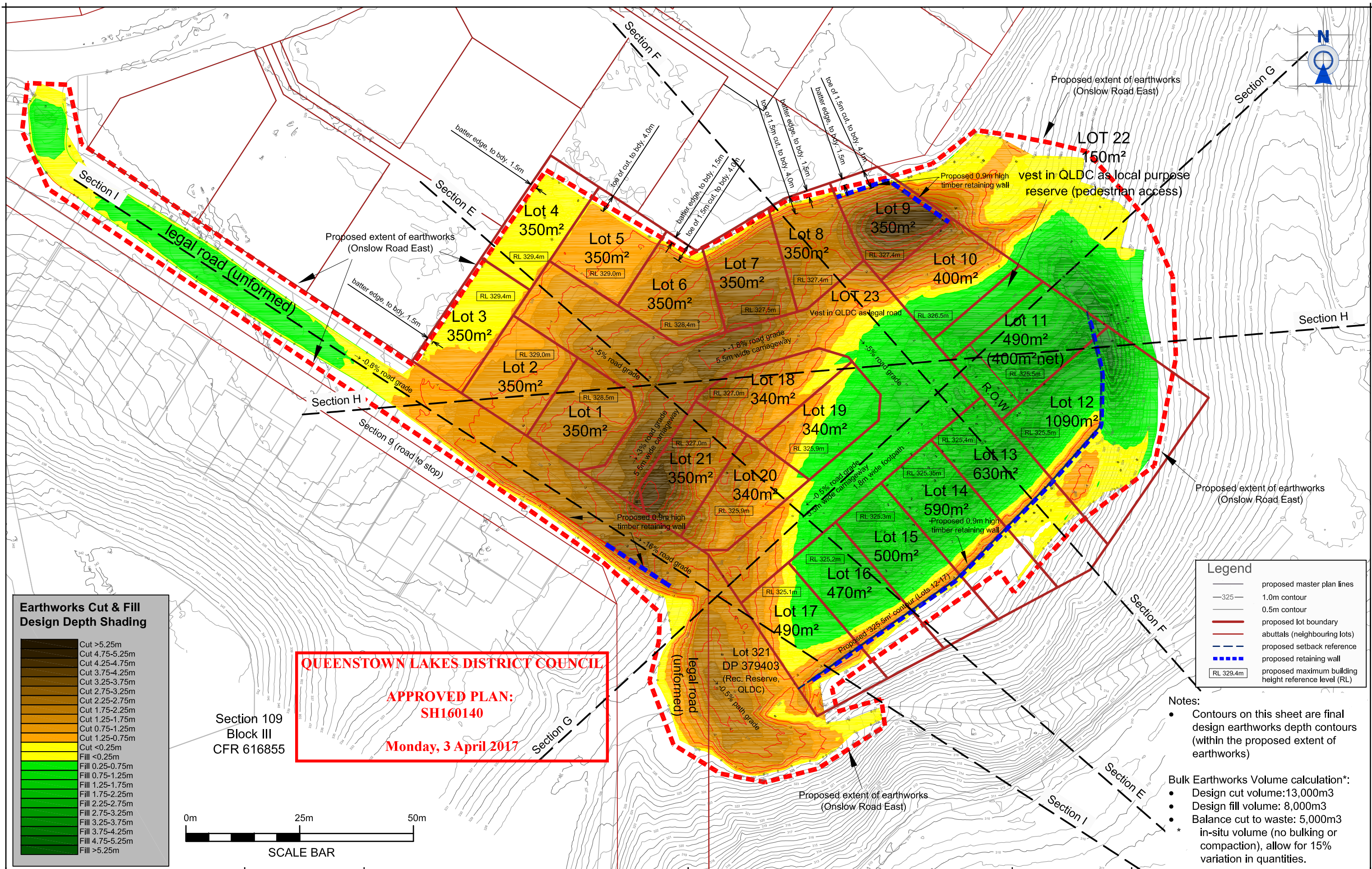
Existing Easements in Gross			
Purpose	Parcel Identifier	Servient Tenement	Grantee
Public Walkway Easement	Unhatched Green	Lot 1 hereon	Queenstown Lakes District Council
Right to convey electricity	See 'Overhead Powerlines'	Lots 1 & 2 hereon	Aurora Energy Ltd


- Notations**
- Existing covenants to be cancelled and new covenants created where necessary.
 - Proposed Public Walkway Easement to be created after the tracks are formed
 - All necessary easements for services to be provided

Notes:

- Schedules refer to:**
- Proposed Road Legalisation Plans Q6231 Series 0, Sheets 1-3
 - Proposed Subdivision Plans Q6231 Series 1, Sheets 1-9

Parcels identified as Sections 1-3, 5-7 & 9-10 are the subject of a road legalisation application.



<div><div>PATERSONPITTSGROUP</div><div>Surveying • Planning • Engineering</div><div>Your Land Professionals www.ppgroup.co.nz 0800 PPGROUP</div><div></div></div>	<div>QUEENSTOWN:</div> <div>Terrace Junction, 1092 Frankton Road. PO Box 2645, Queenstown 9349. T 03 441 4715 E queenstown@ppgroup.co.nz</div>	<div>Client/Location:</div> <div>Sanderson Group 444 Frankton - Ladies Mile Highway & Jones Avenue, Lake Hayes Lot 403 DP 379402 Lake Hayes</div>	<div>Purpose/Drawing Title:</div> <div>PROPOSED SUBDIVISION - STAGE 7 Lots 1 -23 Earthworks - Depth Contours</div>	<div>© COPYRIGHT. This drawing, content and design remains the property of Paterson Pitts Partners Limited and may not be reproduced in part or full or altered without the written permission of Paterson Pitts Partners Limited. This drawing and its content shall only be used for the purpose for which it is intended. No liability shall be accepted by Paterson Pitts Partners Limited for its unauthorized use</div>	Surveyed by:	HS/LR	Original Size:	Scale:	1:750
					Designed by:	SW			
					Drawn by:	LR			
					Checked by:	SW			
					Approved by:	SW	DO NOT SCALE		
Job Ref:	Q6231-12	Sheet No:	11	Revision No:	J	Date Created:	29/03/2017		

