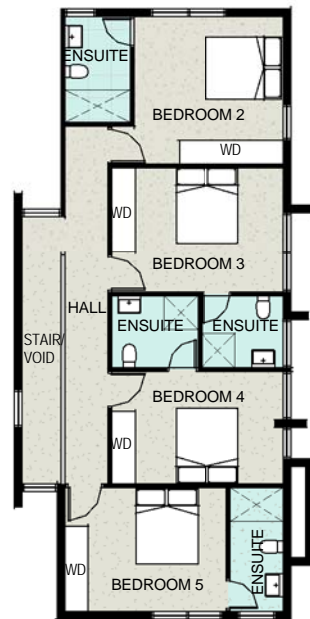




INDICATIVE FLOOR PLAN SINGLE - LEVEL GD



INDICATIVE FLOOR PLAN SINGLE - LEVEL 01

QUEENSTOWN LAKES DISTRICT COUNCIL

APPROVED PLAN:
SH160140

Monday, 3 April 2017

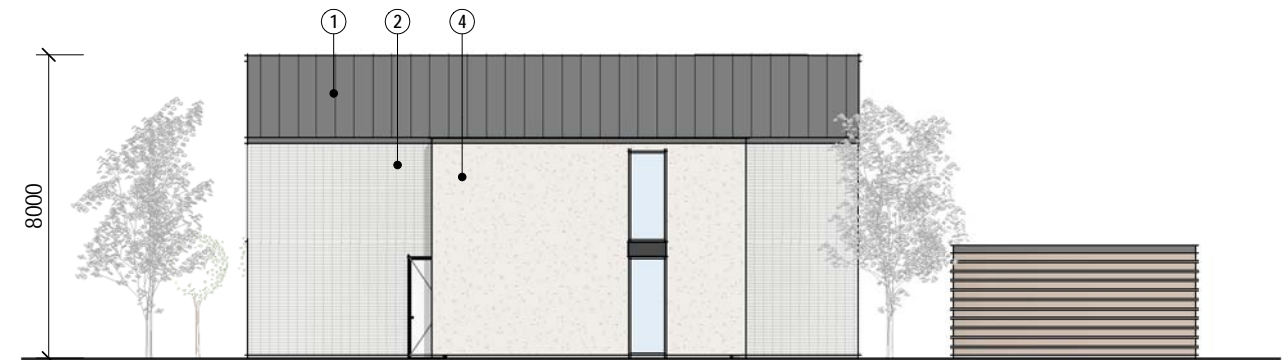
Applicant's Evidence (PLANS) 175



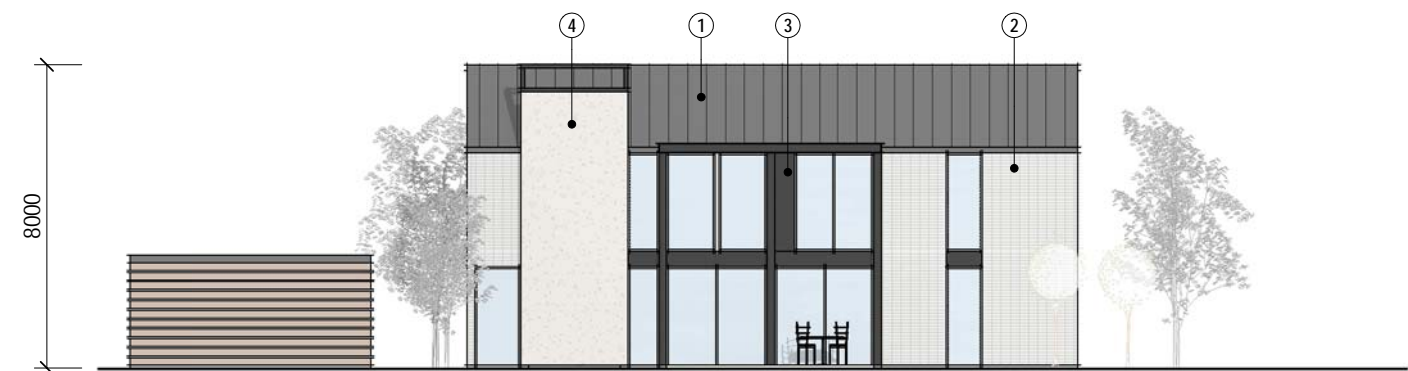
NORTH ELEVATION



SOUTH ELEVATION



EAST ELEVATION



WEST ELEVATION

MATERIALS LEGEND

1. METAL TRAY ROOFING
2. WHITE BAGGED BRICK VENEER
3. DARK PAINTED FIBRE CEMENT
4. PLASTER RENDER



Do not scale. The copyright of this drawing remains with Warren and Mahoney Architects Ltd.

Drawing Status

RESOURCE CONSENT

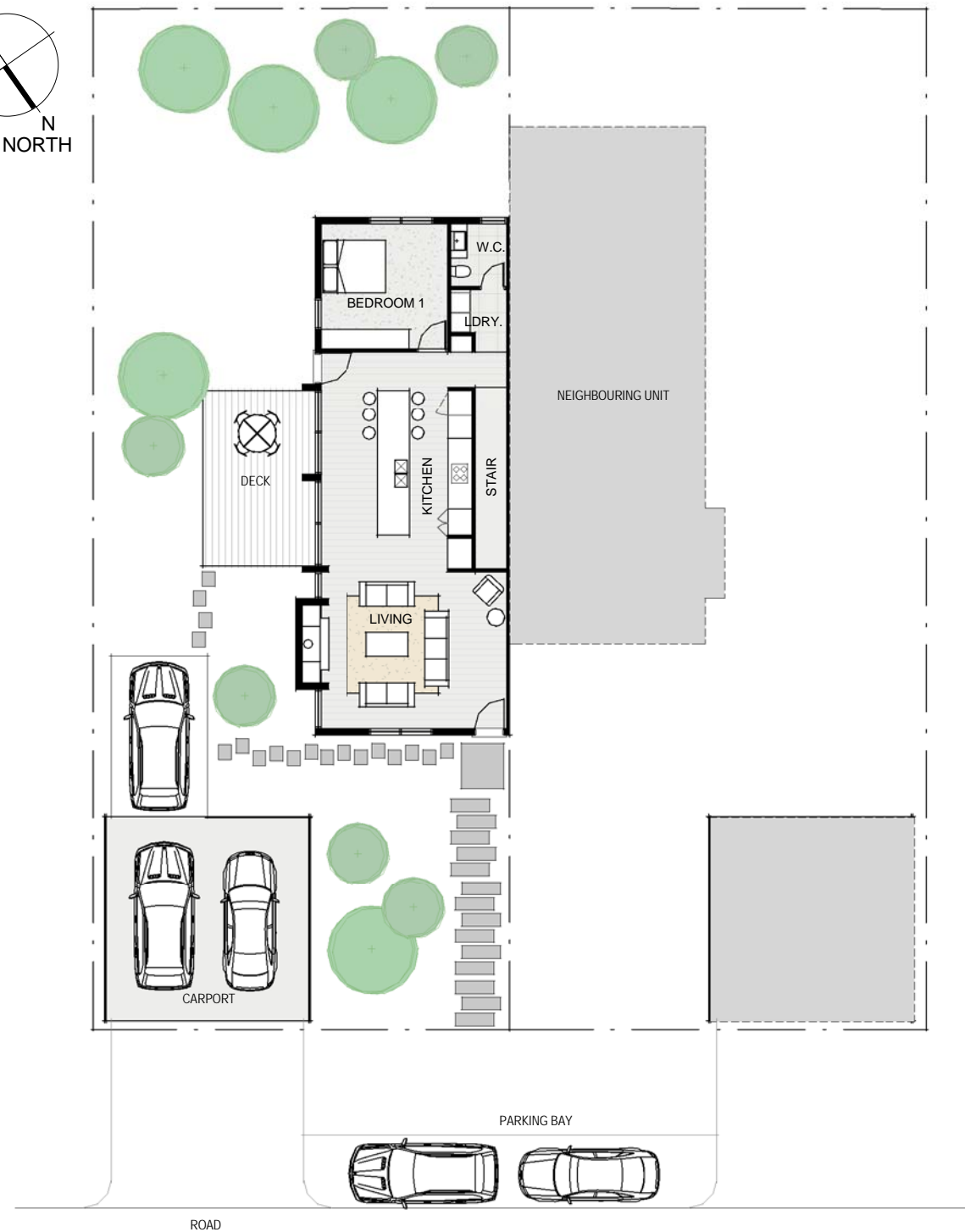
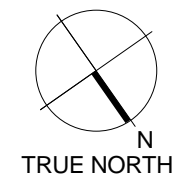
Drawing Details

Scale 1:200 @ A3
Date 12/12/2016
Job No 7672
Drawn ST
Checked IA

Drawing No Revision

RC.27

A



INDICATIVE FLOOR PLAN DUPLEX - LEVEL GD



QUEENSTOWN LAKES DISTRICT COUNCIL

APPROVED PLAN:
SH160140

Monday, 3 April 2017

INDICATIVE FLOOR PLAN DUPLEX - LEVEL 01

Do not scale. The copyright of this drawing remains with Warren and Mahoney Architects Ltd.

Drawing Status

RESOURCE CONSENT

Drawing Details

Scale	1:200 @ A3
Date	12/12/2016
Job No	7672
Drawn	ST
Checked	IA

Drawing No	Revision
------------	----------

RC.28

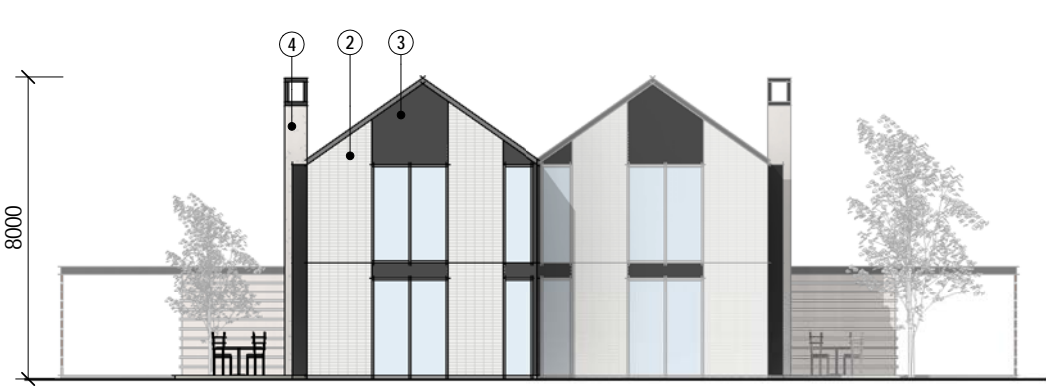
A



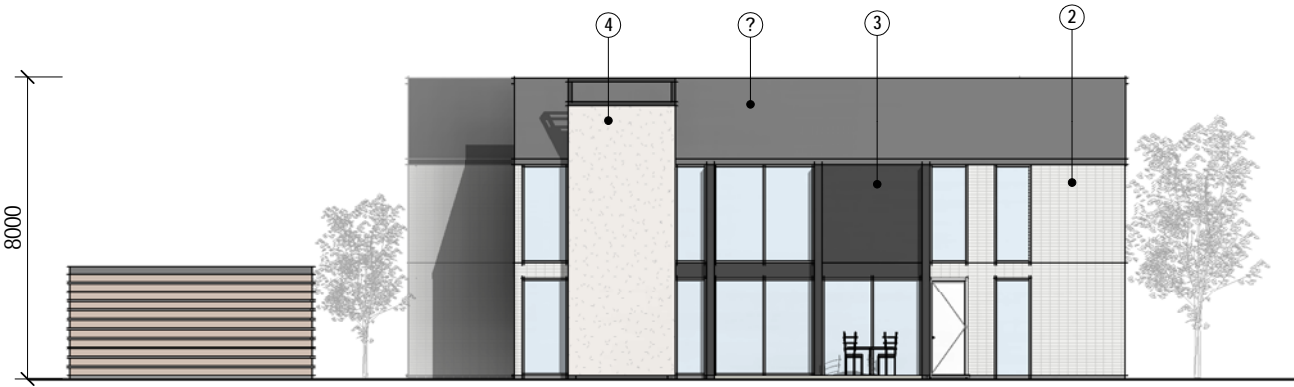
NORTH ELEVATION



EAST ELEVATION



SOUTH ELEVATION



WEST ELEVATION

QUEENSTOWN LAKES DISTRICT COUNCIL

APPROVED PLAN:
SH160140

Monday, 3 April 2017

MATERIALS LEGEND

1.

METAL TRAY ROOFING


2.

WHITE BAGGED BRICK VENEER


3.

DARK PAINTED FIBRE CEMENT


4.

PLASTER RENDER



Do not scale. The copyright of this drawing remains with Warren and Mahoney Architects Ltd.

Drawing Status

RESOURCE CONSENT

Drawing Details

Scale	1:200 @ A3
Date	12/12/2016
Job No	7672
Drawn	ST
Checked	IA

Drawing No Revision

RC.29

A