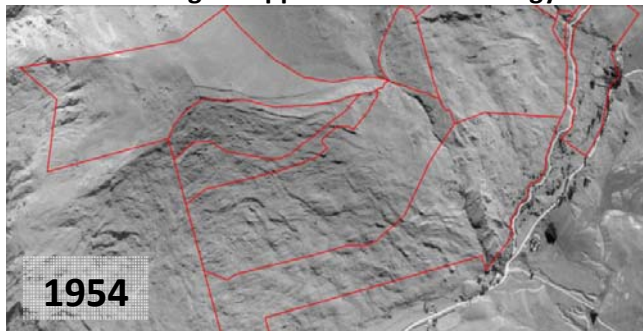
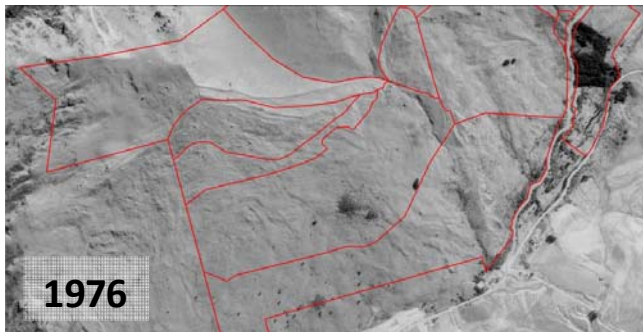


What might happen without a strategy?



1954



1976



1988



2004

Mount Dewar Station: larch outliers developing into closed canopy

Volunteers remove wilding infestation on Ben Lomond.



WWCCG Mission Statement:

"To obtain and coordinate funding to control and contain wilding spread within the Wakatipu district, with the aim to promote and protect values including but not limited to biodiversity, landscape, recreation, and historic features. The society's vision is to advance education and raise awareness by promoting its achievements which will increase community support for a control programme."

DONATIONS By making a financial contribution you can help us maintain and preserve our landscape for future generations. The WWCC welcomes donations from public and businesses.

VOLUNTEER WORK There are many easy access areas around the district where volunteers can "do their bit". If you have a group that is interested in completing control work or you wish to participate in a volunteer day please contact us.

FIND OUT MORE.....

Projects the WWCCG is currently working on go to:

www.qldc.wildings

or contact:

Briana O'Brien (CEO), WWCCG

Private Bag 50072, Queenstown 9348, NZ

Phone: 03 450 1705

Email: Brianao@QLDC.govt.nz

SPONSORED BY:



Wakatipu Wilding Conifer Control Group

Incorporated



WWCCG

A Stitch in Time Saves Nine

THE WWCCG's AIM IS TO CONTROL WILDINGS.....

Queenstown is renowned worldwide for its stunning & iconic landscapes, but they are under threat from wilding trees. Wilding conifers threaten and replace native beech forests and tussock.

Cecil Peak – extensive control has been completed, but scattered wildings still exist.

Wilding forests grow much faster than our native species, & are capable of rapidly & significantly changing the landscape, potentially obliterating it under a monoculture.

Our Vision is the protection and enhancement of:

- Landscape & Aesthetic values – open tussock grasslands.
- Conservation values – maintain biodiversity, native flora & fauna, species protection.
- Land use values – grazing /farming land.
- Hydrological – lowers water yield.
- Recreational values – Tramping, walking, running, cycling.

WHO ARE WE??

The Wakatipu Wilding Conifer Control Group Incorporated (WWCCG) is a community organization created in April 2009; we are a charitable 'not- for-profit' organisation.

We are focused on protecting the resplendent biodiversity and remarkable landscape of the Wakatipu, for the benefit of residents, users, tourists and particularly future generations.

The left side of Mt Dewar was cleared of wildings, the right side shows wilding fringe spread.

WHAT WE NEED?

Funding!! The WWCCG has the expertise to manage wilding tree control using a comprehensive management plan (Wakatipu Wilding Conifer Strategy).

Over 50,000 trees have been removed from the Remarkables since 2004.

THE PROBLEM – WILDING CONIFERS

Wilding is the term given to the natural regeneration of seedling spread from introduced trees. Most of the major forestry species in New Zealand are exotic (introduced) conifers. The majority of wildings grow close to the parent seed source, as this is where most seed falls, but winds have been known to transport seed at least 15 kilometres in the Wakatipu.

Exotic conifers have no natural control in New Zealand and can grow well above our natural tree line which is between 900 and 1,100 meters in Otago. Wildings invade alpine and lowland areas quickly - closed canopy can occur within 10 to 20 years. They out-compete and suppress native vegetation. They potentially form a monoculture, reducing the bio-diversity. Once the canopy closes very little native flora will survive due to lack of light and competition for water and nutrients.

Some species of flora and fauna are endemic (unique) to the Wakatipu. Wildings are threatening native species such as *Coprosma*, *Melicytus*, *Carmichaelia*, and *Olearia* (the scented tree daisy which hosts invertebrates, e.g. moths, grasshoppers and wetas unique to New Zealand).

PREVENTION

Wilding control work has been successfully carried out in the Wakatipu for many years. A factor which makes wilding spread manageable is that conifers are very obvious to spot on the landscape well before coning begins (age of seed production is between 6 and 30 years - 12 years on average - depending on the species). Wilding spread is predictable, though there are many variables.



Wilding spread from parent seed source.

Wilding removal using a chainsaw.



WHAT ARE WE DOING?

The Department of Conservation started wilding tree control in the late 1980's and QLDC started their programs in 1999. Since 2004 QLDC has worked to a comprehensive management plan (Wakatipu Wilding Conifer Strategy). The first strategy identified containment lines. However, there have been insufficient funds to fully implement the original strategy. Follow-up has not kept pace with spread. Therefore the recent strategy update identified the need to form a community group to obtain more funding and to co-ordinate management. This strategy includes a comprehensive work program.

ABOUT WWCCG

The WWCCG is a community-led approach which co-ordinates the responsibilities of agencies, landowners / managers and the general public. It is a volunteer organisation with representation from Queenstown Lakes District Council (QLDC), the Department of Conservation (DOC), Otago Regional Council (ORC) and Land Information New Zealand (LINZ) as well as landowners & managers, community groups & concerned members of the public.

- QLDC provides administrative support. Work programs set out in the strategy are adapted by WWCC and compliment programs run by DOC.
- The WWCC is incorporated under the Incorporated Societies Act 1908, and is a registered charitable society as defined by the Charities Act 2005.
- Information on the society is publically available on the charities register (<http://www.charities.govt.nz>)
- Any donations are tax free and free from gift duty.
- Certain companies qualify for tax benefits.