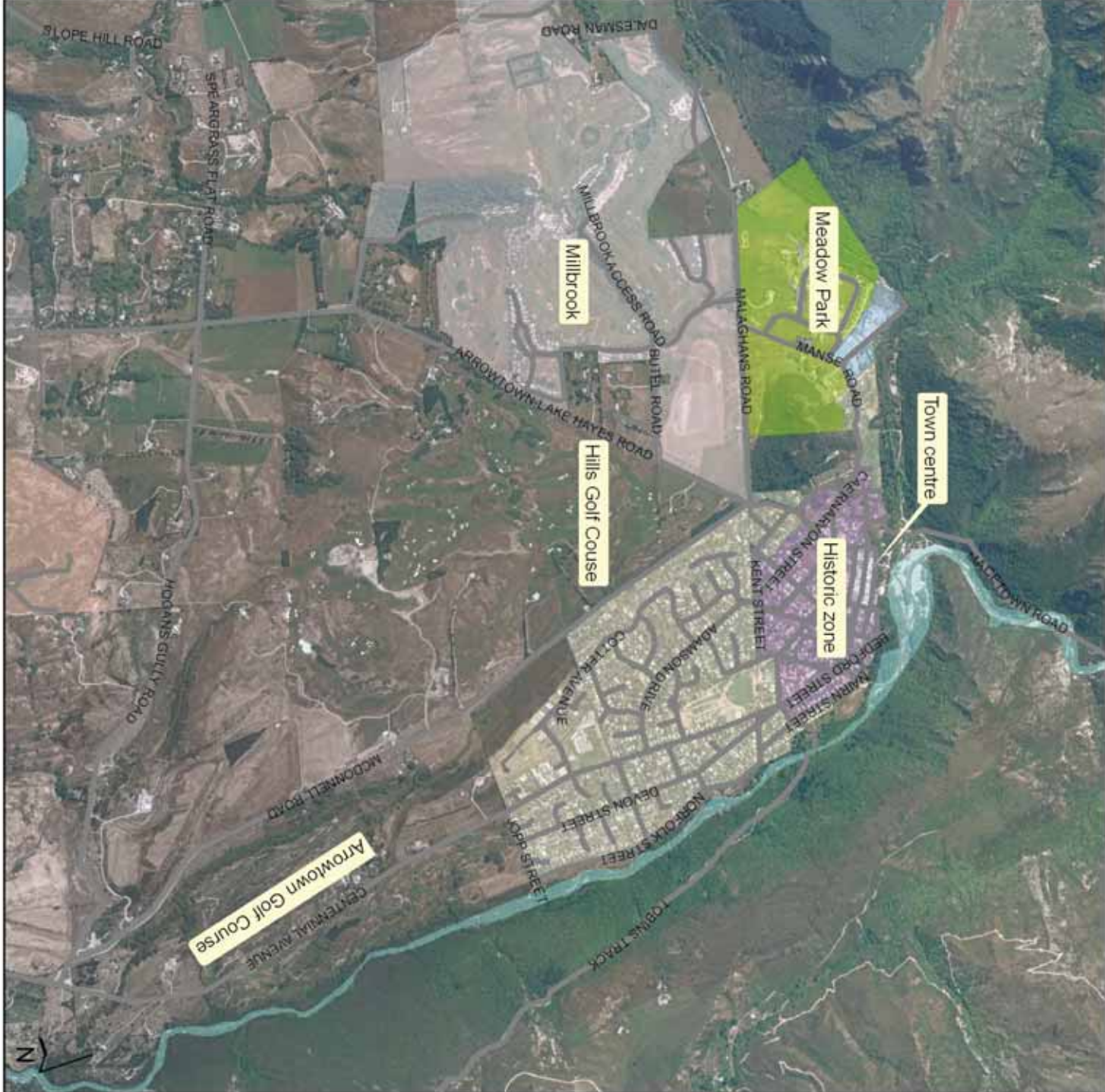


Where do you think a boundary should be? Draw your idea of an acceptable growth boundary for Arrowtown on this map and return it to council



# Arrowtown Growth Boundary



*The population of Arrowtown is likely to increase by 635 residents by 2026.*

November 2008



## Why a growth boundary?

There are currently over 1000 houses in Arrowtown. In 2003 the Arrowtown Community through the Arrowtown Community Plan said a town boundary was needed to help manage where new development should be.

In August the council asked for district-wide feedback on Urban Growth Boundaries.

This showed our communities supported introducing growth boundaries in the District Plan. The greatest level of response was from Arrowtown residents. The feedback raised concern about allowing unmanaged growth. In response to this the council is going to look at the Arrowtown issue as a priority in the district and a Plan Change is now being prepared to incorporate a growth boundary for Arrowtown. Before the council goes any further it needs more feedback from the Arrowtown community.

**What sort of growth is expected?** - Studies have identified that the population of Arrowtown is likely to increase by 635 residents by 2026. Together with the demand for cribs and holiday homes this will generate the need for a further 461 dwellings.

**What are the current planning limits?** - The capacity of the current zoning provisions and resources consents is 312 dwellings. This means that by 2026 there will be a shortfall of 149 dwellings or in other words demand for 149 houses with no infrastructure to service them and nowhere for them to be built.

New development proposals can be progressed through either resource consents or private plan changes. Without a growth boundary identifying where new development should go, decisions would be made on an ad hoc basis in relation to the issues and effects that would be generated by individual proposals. There would be little requirement to consider the bigger picture issues facing Arrowtown, and the Arrowtown Plan would be afforded little weight.

The current zoning means limited ability to have more commercial or employment based development, and there is no provision for additional land for community facilities.

**Things to think about** - Over the next twenty years it is likely that the community will want some things. You need to think about:

- What type of growth is needed? - residential, business and employment, retail, tourist accommodation and facilities, community facilities.
- How much growth is required? - continue with high level growth, manage modest growth, no growth, allow to grow until infrastructure capacity is full.
- Where should growth be located? - within current boundaries, around the edge of town, along main roads in a corridor, in areas where this is currently infrastructure.



### Have your say

Please indicate which of the four options you prefer and provide a brief explanation why.

#### Options

Four main options for dealing with future growth have been identified: (tick one)

- 1. continue with high level growth,
- 2. manage modest growth,
- 3. no growth,
- 4. allow to grow until infrastructure capacity is full.

These approaches will all have a different impact on your community. Things to think about include the well being of residents, the character and amenity of the area and the sustainability of Arrowtown.

#### Where should the line be drawn?

Turn over the brochure to the map and use a marker pen to draw on the map to indicate where you think the boundary should be drawn.

Comment should be with the council by Friday, 13 February 2009.



**Comments**  
Please let us know if you have any further comments on the growth boundary for Arrowtown:

---

---

---

---

#### Contact details

Name: \_\_\_\_\_

Address: \_\_\_\_\_

Phone: \_\_\_\_\_

Email: \_\_\_\_\_

**Further information** - a full discussion document, a more detailed feedback form on the Arrowtown Boundary and proposed change to the District Plan can be found on the council's website [www.qldc.govt.nz](http://www.qldc.govt.nz), the Arrowtown Library and Lakes District Museum.

**Drop-in sessions** will take place at the Arrowtown Athenaeum Hall supper room on Thursday, 18 December 2008 and Wednesday, 14 January 2009 between 3-6pm.

#### Return your map and comments to:

QLDC  
Private Bag 50072  
Queenstown 9348  
Freepost 191078

